

BALTIMORE, MARYLAND

AL-804 (FAA)

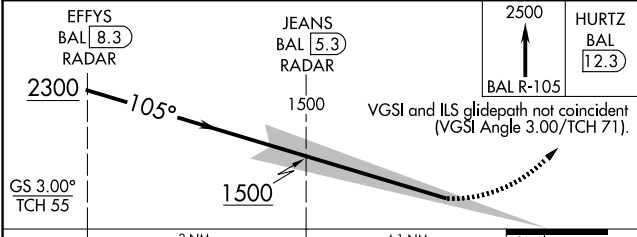
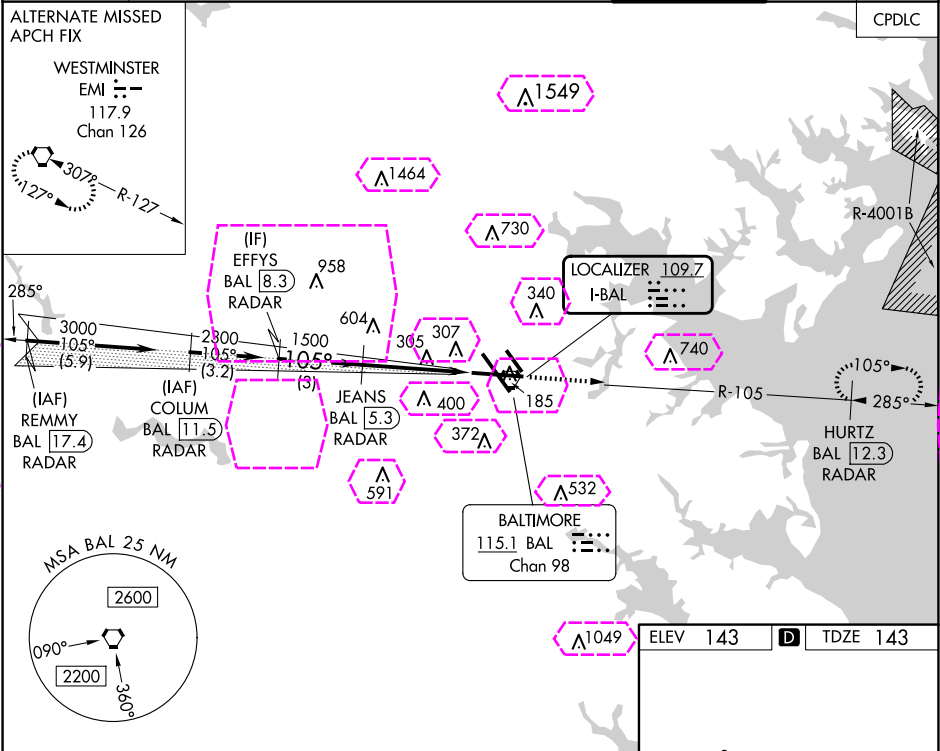
25163

LOC I-BAL <b>109.7</b>	APP CRS <b>105°</b>	Rwy Ldg TDZE Apt Elev	<b>9953</b> <b>143</b> <b>143</b>
---------------------------	------------------------	-----------------------------	---

BALTIMORE/ ILS RWY 10 (CAT II & III)  
WASHINGTON INTL THURGOOD MARSHALL (BWI)

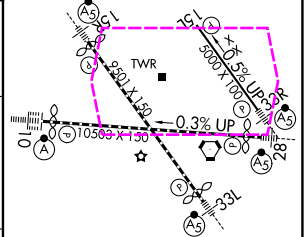
RADAR required for procedure entry. DME or RADAR required.	ALS-F-2 	MISSED APPROACH: Climb to 2500 on BAL VORTAC R-105 to HURTZ/BAL 12.3 DME/RADAR and hold.
---	-------------	---

D-ATIS <b>115.1 127.8</b>	POTOMAC APP CON <b>119.0 282.275</b> (020°-100°) <b>119.7 290.475</b> (131°-180°) <b>124.55 317.425</b> (101°-130°) <b>128.7 307.9</b> (181°-019°)	BALTIMORE TOWER <b>119.4 257.8</b>	GND CON <b>121.9</b>	CLNC DEL <b>118.05</b>
------------------------------	--	---------------------------------------	-------------------------	---------------------------



CATEGORY	A	B	C	D
S-ILS 10	CAT II RA 105/12 100 DA 243			
S-ILS 10	CAT III RVR 06			

CATEGORY II & III ILS - SPECIAL AIRCREW  
& AIRCRAFT CERTIFICATION REQUIRED



TDZ/CL Rwy 10 and 33L  
REIL Rwy 15L and 33R  
HIRL all Rwy

BALTIMORE, MARYLAND  
Amdt 22 05SEP24

BALTIMORE/WASHINGTON INTL THURGOOD MARSHALL (BWI)  
39°11'N-76°40'W

ILS RWY 10 (CAT II & III)

BALTIMORE, MARYLAND

AL-804 (FAA)

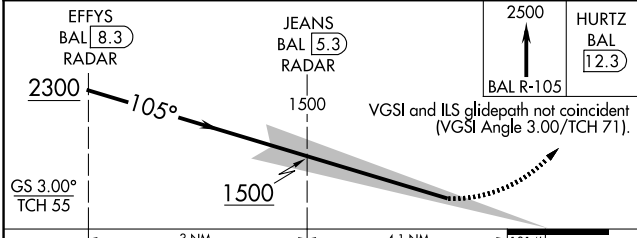
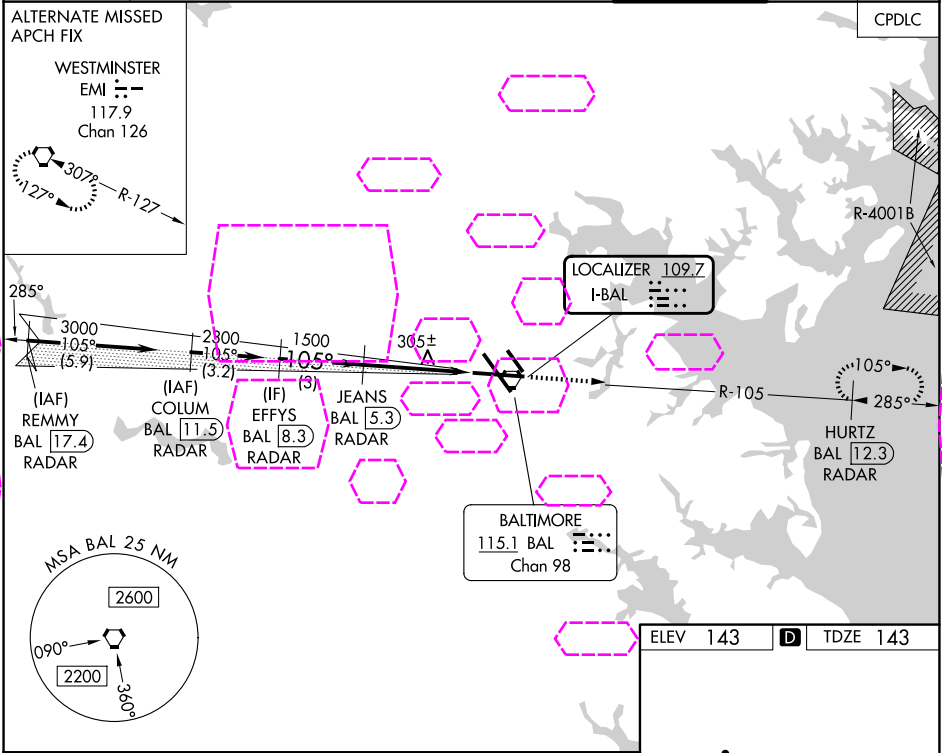
25219

LOC I-BAL <b>109.7</b>	APP CRS <b>105°</b>	Rwy Ldg <b>9953</b> TDZE <b>143</b> Apt Elev <b>143</b>
---------------------------	------------------------	---

BALTIMORE/ ILS RWY 10 (CAT II & III)  
WASHINGTON INTL THURGOOD MARSHALL (BWI)

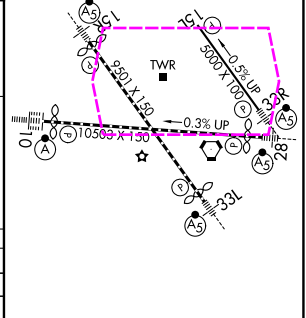
RADAR required for procedure entry. DME or RADAR required.	ALSIF-2 	MISSED APPROACH: Climb to 2500 on BAL VORTAC R-105 to HURTZ/BAL 12.3 DME/RADAR and hold.
---	-------------	---

D-ATIS <b>115.1 127.8</b>	POTOMAC APP CON <b>119.0 282.275</b> (020°-100°) <b>119.7 290.475</b> (131°-180°) <b>124.55 317.425</b> (101°-130°) <b>128.7 307.9</b> (181°-019°)	BALTIMORE TOWER <b>119.4 257.8</b>	GND CON <b>121.9</b>	CLNC DEL <b>118.05</b>
------------------------------	--	---------------------------------------	-------------------------	---------------------------



CATEGORY	A	B	C	D
S-ILS 10	CAT II RA 105/12 100 DA 243			
S-ILS 10	CAT III RVR 06			

CATEGORY II & III ILS - SPECIAL AIRCREW & AIRCRAFT CERTIFICATION REQUIRED



TDZ/CL Rwy 10 and 33L  
REIL Rwy 15L and 33R  
HIRL all Rwy

BALTIMORE, MARYLAND  
Amdt 22 05SEP24

BALTIMORE/WASHINGTON INTL THURGOOD MARSHALL (BWI)  
39°11'N-76°40'W

ILS RWY 10 (CAT II & III)

NE-3, 07 AUG 2025 to 04 SEP 2025

NE-3, 07 AUG 2025 to 04 SEP 2025