

PARIS, TEXAS

AL-803 (FAA)

25163

WAAS CH 63001 W35A	APP CRS 355°	Rwy Ldg 6002 TDZE 532 Apt Elev 548
--	------------------------	---

RNAV (GPS) RWY 35

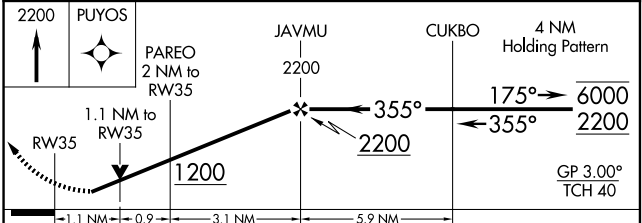
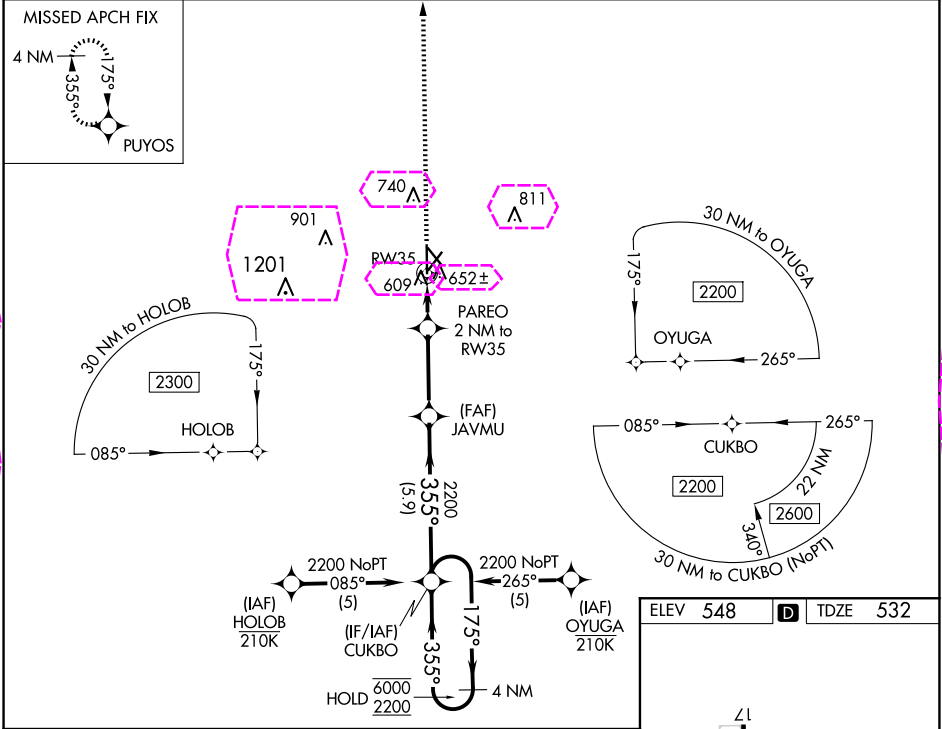
COX FLD (PRX)

RNP APCH - GPS.

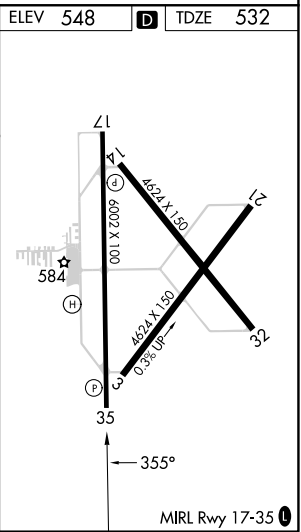
▼ For uncompensated Baro-VNAV systems, LNAV/VNAV NA below -8°C or above 54°C. Baro-VNAV and VDP NA when using SLR altimeter setting. Rwy 35 helicopter visibility reduction below ¾ SM NA. When local altimeter setting not received, use SLR altimeter setting and increase LPV DA to 859 feet and all visibilities ¼ SM. Increase LNAV/VNAV DA to 1002 feet and all visibilities ¼ SM. Increase all MDAs 80 feet and LNAV visibility Cat C/D ¼ SM, and Circling visibility Cat C/D ¼ SM.

MISSED APPROACH:
Climb to 2200 direct
PUYOS and hold.

AWOS-3PT 119.675	FORT WORTH CENTER 124.875	UNICOM 122.975 (CTAF) 0
----------------------------	-------------------------------------	--



CATEGORY	A	B	C	D
LPV DA		782-¾	250 (300-¾)	
LNAV/VNAV DA		925-1½	393 (400-1½)	
LNAV MDA	920-1	388 (400-1)	920-1½	388 (400-1½)
CIRCLING	1060-1	512 (600-1)	1100-1½ 552 (600-1½)	1220-2¼ 672 (700-2¼)



PARIS, TEXAS

Amtd 1 12JUN25

33°38' N-95°27' W

COX FLD (PRX)

RNAV (GPS) RWY 35

SC-2, 10 JUL 2025 to 07 AUG 2025

SC-2, 10 JUL 2025 to 07 AUG 2025

PARIS, TEXAS

AL-803 (FAA)

25219

WAAS CH 63001 W35A	APP CRS 355°	Rwy Ldg 6002 TDZE 532 Apt Elev 548
--	------------------------	---

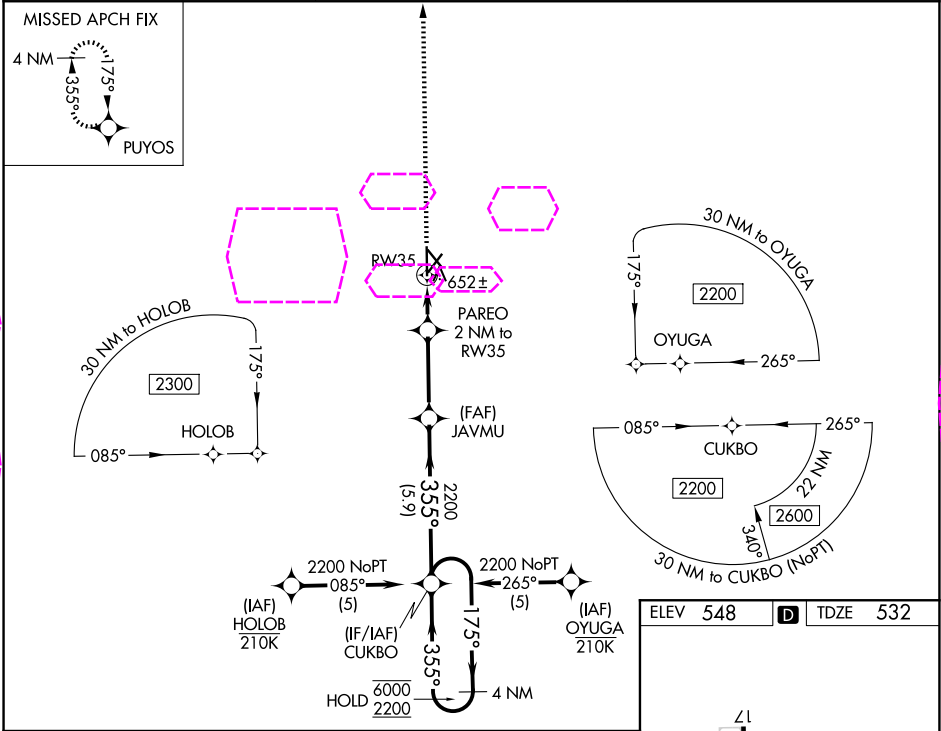
RNAV (GPS) RWY 35
COX FLD (PRX)

RNP APCH - GPS.

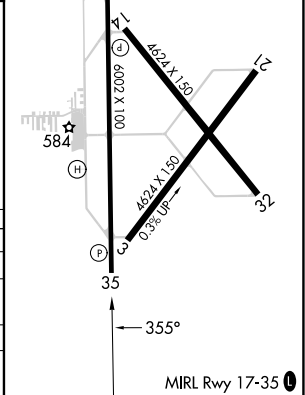
▼ For uncompensated Baro-VNAV systems, LNAV/VNAV NA below -8°C or above 54°C. Baro-VNAV and VDP NA when using SLR altimeter setting. Rwy 35 helicopter visibility reduction below ¾ SM NA. When local altimeter setting not received, use SLR altimeter setting and increase LPV DA to 859 feet and all visibilities ¼ SM. Increase LNAV/VNAV DA to 1002 feet and all visibilities ¼ SM. Increase all MDAs 80 feet and LNAV visibility Cat C/D ¼ SM, and Circling visibility Cat C/D ¼ SM.

MISSED APPROACH: Climb to 2200 direct PUYOS and hold.

AWOS-3PT 119.675	FORT WORTH CENTER 124.875 370.95	UNICOM 122.975 (CTAF) 0
----------------------------	--	--



2200	PUYOS	PAREO 2 NM to RW35	JAVMU 2200	CUKBO 4 NM Holding Pattern
1.1 NM to RW35	1.1 NM to RW35	3.1 NM	5.9 NM	4 NM
1200	2200	2200	6000	2200
175°	355°	175°	355°	35°
GP 3.00°	TCH 40			
CATEGORY	A	B	C	D
LPV DA		782-¾	250 (300-¾)	
LNAV/VNAV DA		925-1½	393 (400-1½)	
LNAV MDA	920-1	388 (400-1)	920-1½	388 (400-1½)
CIRCLING	1060-1	512 (600-1)	1100-1½ 552 (600-1½)	1220-2¼ 672 (700-2¼)



PARIS, TEXAS

Amtd 1 12JUN25

33°38' N-95°27' W

COX FLD (PRX)
RNAV (GPS) RWY 35

SC-2, 07 AUG 2025 to 04 SEP 2025

SC-2, 07 AUG 2025 to 04 SEP 2025