

PARIS, TEXAS

AL-803 (FAA)

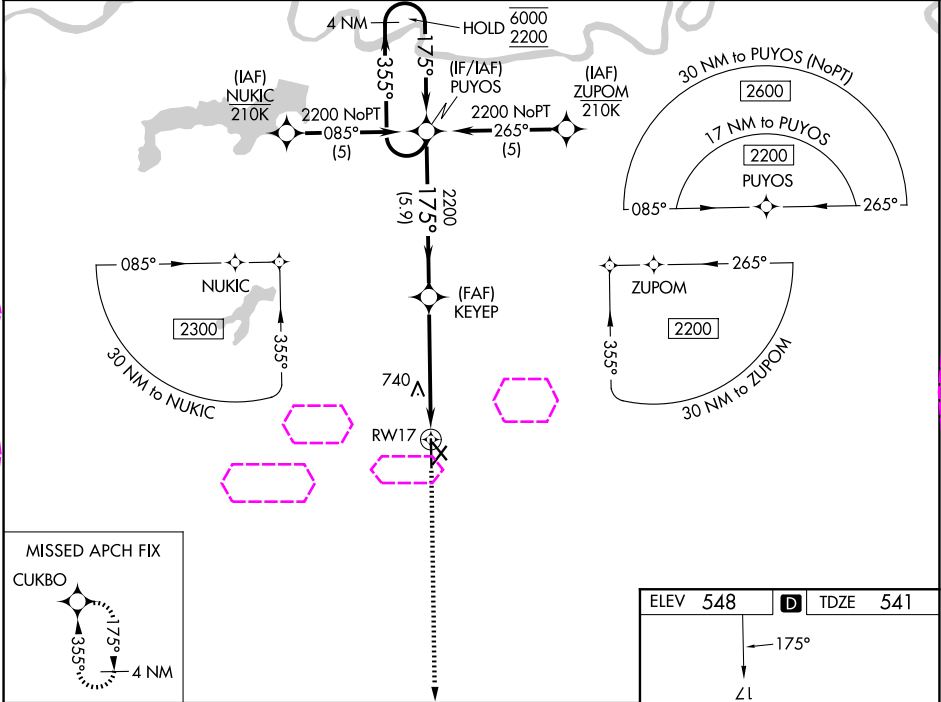
25219

WAAS CH 69401 W17A	APP CRS 175°	Rwy Ldg 6002 TDZE 541 Apt Elev 548
--	------------------------	---

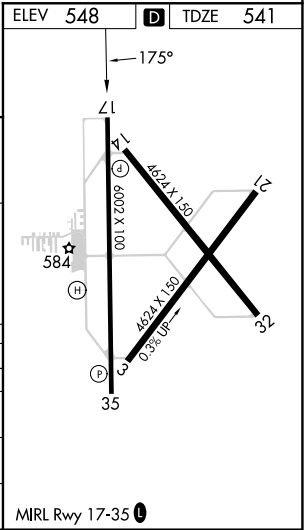
RNAV (GPS) RWY 17
COX FLD (PRX)

RNP APCH - GPS. Baro-VNAV and VDP NA when using SLR altimeter setting. For uncompensated Baro-VNAV systems, LNAV/VNAV NA below -8°C or above 54°C. When local altimeter setting not received, use SLR altimeter setting and increase LPV DA to 868 feet and all visibilities ¼ SM. Increase LNAV/VNAV DA to 1016 feet and all visibilities ¼ SM. Increase all MDAs 80 feet and LNAV visibility Cat C/D ¼ SM, and Circling visibility Cat C/D ¼ SM.	MISSED APPROACH: Climb to 2200 direct CUKBO and hold.
--	---

AWOS-3PT 119.675	FORT WORTH CENTER 124.875 370.95	UNICOM 122.975 (CTAF)
----------------------------	---	---------------------------------



4 NM Holding Pattern				
PUYOS				
KEYEP				
2200				
1.4 NM to RWY 17				
RWY 17				
5.9 NM				
3.6 NM				
1.4 NM				
CATEGORY	A	B	C	D
LPV DA	791-3/4 250 (300-3/4)			
LNAV/VNAV DA	939-1 398 (400-1 1/8)			
LNAV MDA	1040-1	499 (500-1)	1040-1 3/8	499 (500-1 3/8)
CIRCLING	1060-1	512 (600-1)	1100-1 1/2	1220-2 1/4
			552 (600-1 1/2)	672 (700-2 1/4)



PARIS, TEXAS

Amtd 1 12JUN25

33°38' N-95°27' W

RNAV (GPS) RWY 17
COX FLD (PRX)