

KANSAS CITY, MISSOURI

AL-780 (FAA)

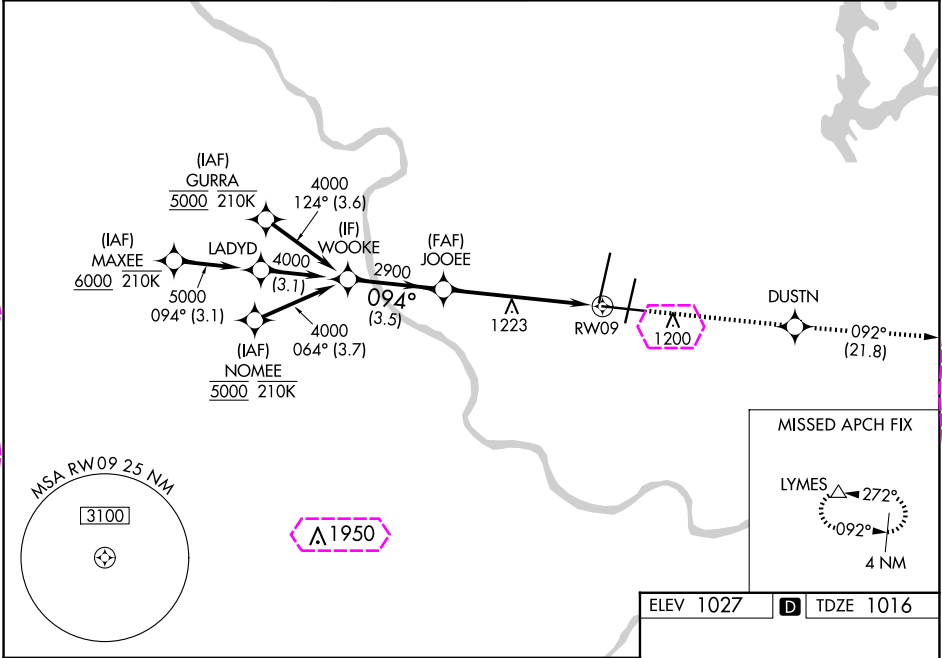
24081

WAAS CH <b>56608</b> <b>W09A</b>	APP CRS <b>094°</b>	Rwy Idg <b>9501</b> TDZE <b>1016</b> Apt Elev <b>1027</b>
--	------------------------	---

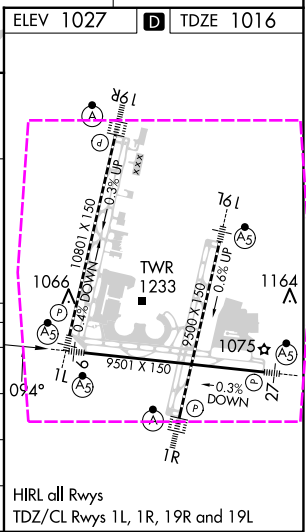
**RNAV (GPS) Y RWY 9**  
KANSAS CITY INTL (MCI)

RNP APCH - GPS. ▼ For uncompensated Baro-VNAV systems, LNAV/VNAV NA below -19°C or above 54°C. For inop ALS, increase LPV all Cats and LNAV/VNAV all Cats visibility to RVR 4500, and increase LNAV Cats C/D visibility to 1 3/8 SM.	MALSR 	MISSED APPROACH: Climb to 4000 direct DUSTN and on track 092° to LYMES and hold.
---	-----------	--

D-ATIS <b>128.375</b>	KANSAS CITY APP CON <b>120.95 318.1</b>	INTERNATIONAL TOWER <b>128.2 254.25</b>	GND CON <b>121.8</b>	CLNC DEL <b>135.7</b>	CPDLC
--------------------------	--	--	-------------------------	--------------------------	-------



	WOOKE	JOOEE	4000	DUSTN	tr 092°	LYMES
	4000	2900	2900			
	094°					
GP 3.00° TCH 56				1.3 NM to RWY 09		
	3.5 NM	4.5 NM	1.3 NM			
CATEGORY	A	B	C	D		
LPV DA		1316/40	300 (300-3/4)			
LNAV/VNAV DA		1319/40	303 (300-3/4)			
LNAV MDA	1480/24	464 (500-1/2)	1480/50	464 (500-1)		
CIRCLING	1540-1	513 (600-1)	1540-1 1/2	1580-2		
			513 (600-1 1/2)	553 (600-2)		



KANSAS CITY, MISSOURI  
Amdt 4 29DEC22

39°18'N-94°43'W

KANSAS CITY INTL (MCI)  
**RNAV (GPS) Y RWY 9**

NC-3, 10 JUL 2025 to 07 AUG 2025

NC-3, 10 JUL 2025 to 07 AUG 2025

KANSAS CITY, MISSOURI

AL-780 (FAA)

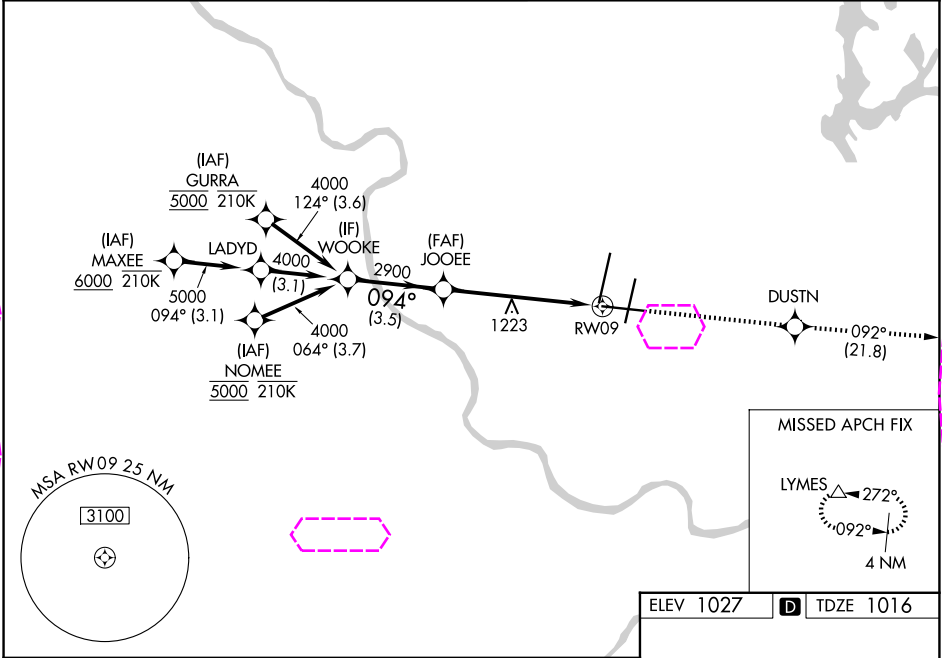
25219

WAAS CH <b>56608</b> <b>W09A</b>	APP CRS <b>094°</b>	Rwy Ldg TDZE <b>1016</b> Apt Elev <b>1027</b>
--	------------------------	---

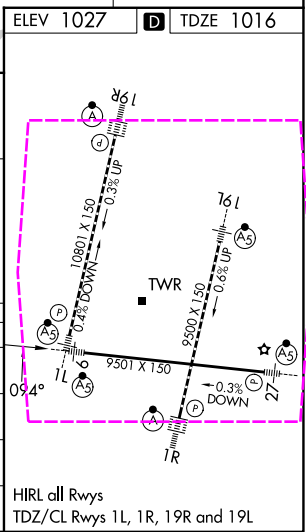
# RNAV (GPS) Y RWY 9

KANSAS CITY INTL (MCI)

RNP APCH - GPS. ▼ For uncompensated Baro-VNAV systems, LNAV/VNAV NA below -19°C or above 54°C. For inop ALS, increase LPV all Cats and LNAV/VNAV all Cats visibility to RVR 4500, and increase LNAV Cats C/D visibility to 1 3/8 SM.		MALSR 	MISSED APPROACH: Climb to 4000 direct DUSTN and on track 092° to LYMES and hold.		
D-ATIS <b>128.375</b>	KANSAS CITY APP CON <b>120.95 318.1</b>	INTERNATIONAL TOWER <b>128.2 254.25</b>	GND CON <b>121.8</b>	CLNC DEL <b>135.7</b>	CPDLC



WOOKE		4000	DUSTN	tr 092°	LYMES
4000		2900	1.3 NM to RW09		
GP 3.00°		2900	RW09		
TCH 56		3.5 NM	4.5 NM	1.3 NM	
CATEGORY	A	B	C	D	
LPV DA	1316/40 300 (300-3/4)				
LNAV/VNAV DA	1319/40 303 (300-3/4)				
LNAV MDA	1480/24	464 (500-1/2)	1480/50	464 (500-1)	
CIRCLING	1540-1	513 (600-1)	1540-1 1/2	1580-2	
			513 (600-1 1/2)	553 (600-2)	



KANSAS CITY, MISSOURI  
Amdt 4 29DEC22

39°18'N-94°43'W

KANSAS CITY INTL (MCI)  
RNP (GPS) Y RWY 9

NC-3, 07 AUG 2025 to 04 SEP 2025

NC-3, 07 AUG 2025 to 04 SEP 2025