

KANSAS CITY, MISSOURI

AL-780 (FAA)

24081

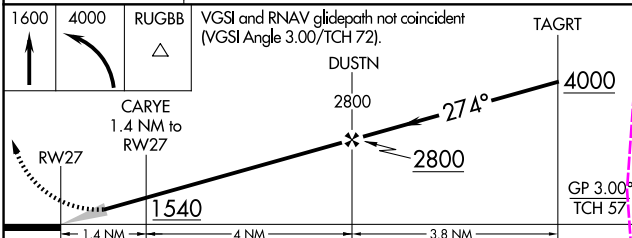
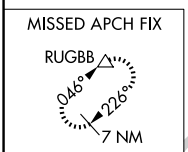
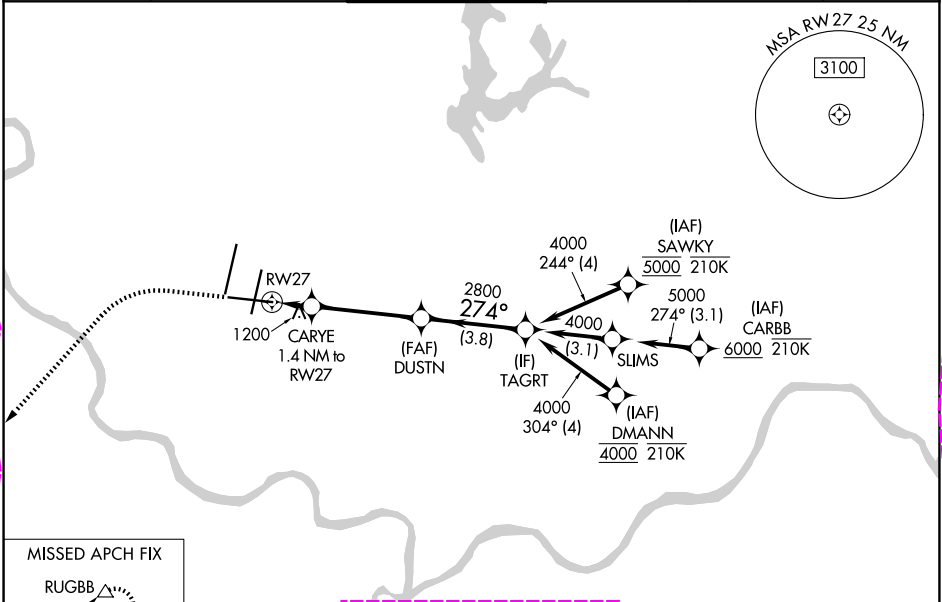
WAAS CH 82708 W27A	APP CRS 274°	Rwy Idg TDZE Apt Elev	9501 1027 1027
--	------------------------	-----------------------------	---

RNAV (GPS) Y RWY 27

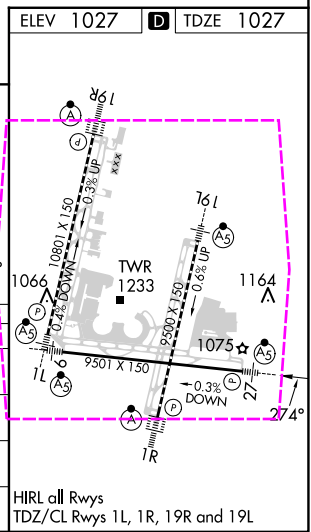
KANSAS CITY INTL (MCI)

RNP APCH - GPS. ▼ For uncompensated Baro-VNAV systems, LNAV/VNAV NA below -19°C or above 54°C. For inop ALS, increase LNAV/VNAV all Cats to 1½ SM. * RVR 1800 authorized with use of FD or AP or HUD to DA.	MALSR AS	MISSED APPROACH: Climb to 1600 then climbing left turn to 4000 direct RUGBB and hold.
---	-------------	---

D-ATIS 128.375	KANSAS CITY APP CON 120.95 318.1	INTERNATIONAL TOWER 128.2 254.25	GND CON 121.8	CLNC DEL 135.7	CPDLC
--------------------------	--	--	-------------------------	--------------------------	-------



CATEGORY	A	B	C	D
LPV DA*	1227/24	200 (200-½)		
LNAV/VNAV DA	1496/50	469 (500-1)		
LNAV MDA	1460/24	433 (500-½)	1460/40	433 (500-¾)
CIRCLING	1540-1	513 (600-1)	1540-1½ 513 (600-1½)	1580-2 553 (600-2)



KANSAS CITY, MISSOURI
Amdt 4 29DEC22

39°18'N-94°43'W

RNAV (GPS) Y RWY 27

KANSAS CITY INTL (MCI)

KANSAS CITY, MISSOURI


AL-780 (FAA)

25219

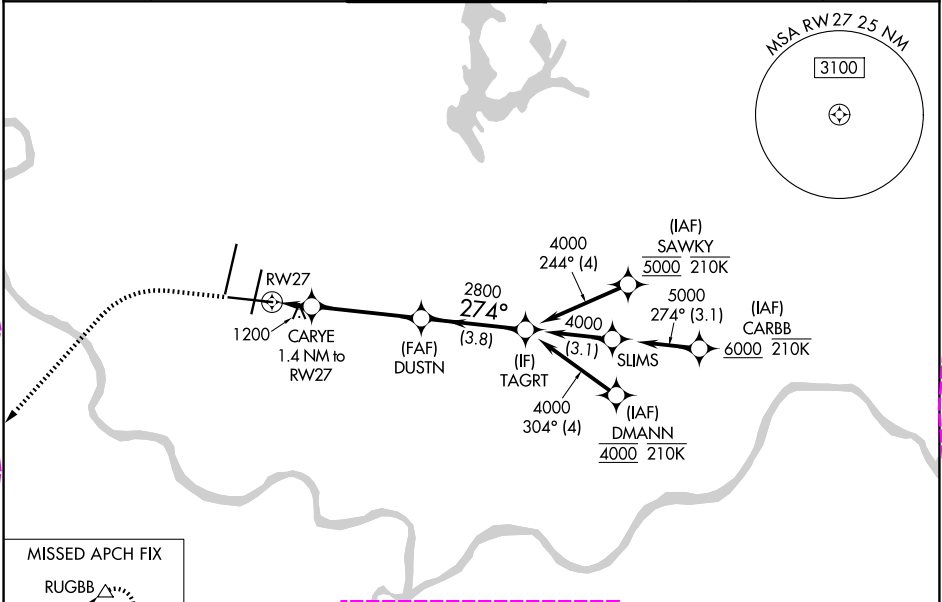
WAAS CH 82708 W27A	APP CRS 274°	Rwy Ldg TDZE 1027 Apt Elev 1027	9501
--	------------------------	---	-------------

RNAV (GPS) Y RWY 27

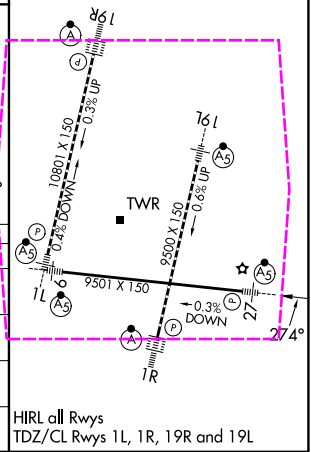
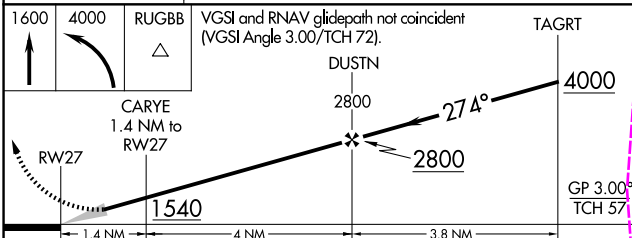
KANSAS CITY INTL (MCI)

RNP APCH - GPS. ▼ For uncompensated Baro-VNAV systems, LNAV/VNAV NA below -19°C or above 54°C. For inop ALS, increase LNAV/VNAV all Cats to 1½ SM. * RVR 1800 authorized with use of FD or AP or HUD to DA.	MALSR 	MISSED APPROACH: Climb to 1600 then climbing left turn to 4000 direct RUGBB and hold.
---	--	---

D-ATIS 128.375	KANSAS CITY APP CON 120.95 318.1	INTERNATIONAL TOWER 128.2 254.25	GND CON 121.8	CLNC DEL 135.7	CPDLC
--------------------------	--	--	-------------------------	--------------------------	-------



MISSED APCH FIX RUGBB 0.46° 226° 7 NM	ELEV 1027	TDZE 1027
---	-----------	-----------



CATEGORY	A	B	C	D
LPV DA*	1227/24	200 (200-½)		
LNAV/VNAV DA	1496/50	469 (500-1)		
LNAV MDA	1460/24	433 (500-½)	1460/40	433 (500-¾)
CIRCLING	1540-1	513 (600-1)	1540-1½ 513 (600-1½)	1580-2 553 (600-2)

KANSAS CITY, MISSOURI
Amdt 4 29DEC22

39°18'N-94°43'W

KANSAS CITY INTL (MCI)
RNP (GPS) Y RWY 27

NC-3, 07 AUG 2025 to 04 SEP 2025

NC-3, 07 AUG 2025 to 04 SEP 2025