

KANSAS CITY, MISSOURI

AL-780 (FAA)

24081

WAAS CH 42808 W01B	APP CRS 011°	Rwy Idg 10801 TDZE 1014 Apt Elev 1027
--	------------------------	--


RNAV (GPS) Y RWY 1L

KANSAS CITY INTL (MCI)

RNP APCH - GPS.

▼ Use of FD or AP required during simultaneous operations. LNAV procedure NA during simultaneous operations. For uncompensated Baro-VNAV systems, LNAV/VNAV NA below -19°C or above 54°C. For inop ALS, increase LNAV/VNAV all Cats visibility to RVR 4500 and LNAV Cats C/D visibility to RVR 5500. Simultaneous approach authorized except from GAYLZ and JERLD.

MALSR



MISSED APPROACH: Climb to 2000 then climbing left turn to 4000 direct BOWLRL and hold.

D-ATIS 128.375	KANSAS CITY APP CON 120.95 318.1	INTERNATIONAL TOWER 128.2 254.25	GND CON 121.8	CLNC DEL 135.7	CPDLC
--------------------------	--	--	-------------------------	--------------------------	-------



ELEV 1027		D		TDZE 1014	
HIREL all Rwy's TDZ/CL Rwy's 1L, 1R, 19R and 19L					
CYPRE	VGSI and RNAV glidepath not coincident (VGSI Angle 3.00/TCH 78).	2000	4000	BOWLRL	
DASHI	WMPOW	JERZE	ZUGOR	RW01L	
6000	5000	4000	2900	1700	
GP 3.00°	TCH 57				
← 3.1 NM		← 3.1 NM	← 3.5 NM	← 3.7 NM	← 1.1 NM
← 0.9 NM					
CATEGORY	A	B	C	D	
LPV DA	1214/18		200 (200-½)		
LNAV/VNAV DA	1328/24		314 (400-½)		
LNAV MDA	1380/24		366 (400-½)		1380/35 366 (400-¾)
CIRCLING	1540-1 513 (600-1)		1540-1½ 513 (600-1½)		1580-2 553 (600-2)

NC-3, 10 JUL 2025 to 07 AUG 2025

NC-3, 10 JUL 2025 to 07 AUG 2025

KANSAS CITY, MISSOURI

AL-780 (FAA)

25219

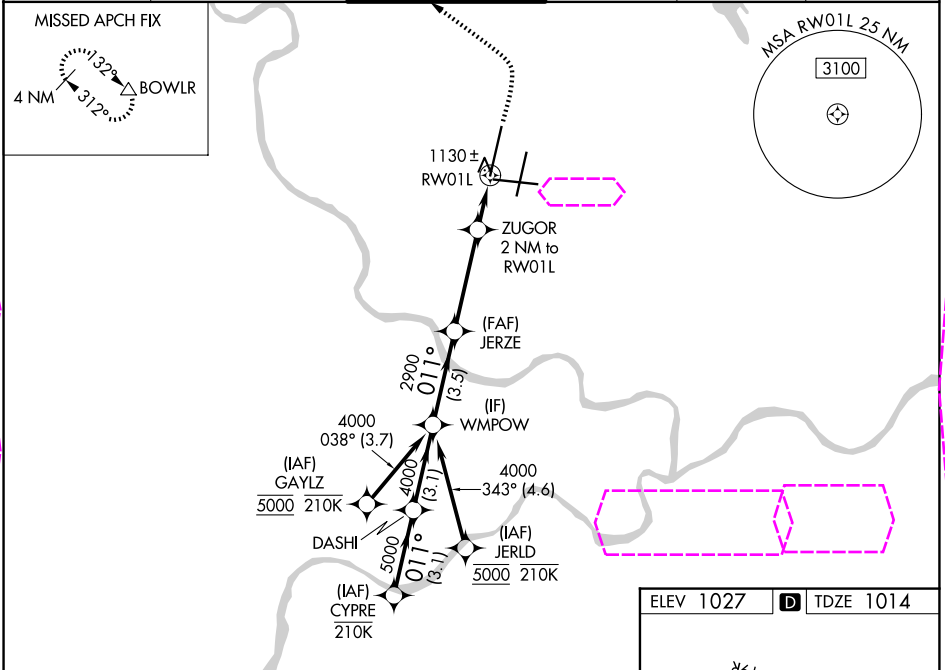
WAAS CH 42808 W01B	APP CRS 011°	Rwy Ldg 10801 TDZE 1014 Apt Elev 1027
--	------------------------	--

RNAV (GPS) Y RWY 1L

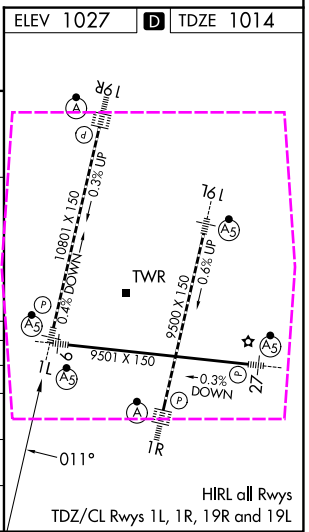
KANSAS CITY INTL (MCI)

RNP APCH - GPS. ▼ Use of FD or AP required during simultaneous operations. LNAV procedure NA during simultaneous operations. For uncompensated Baro-VNAV systems, LNAV/VNAV NA below -19°C or above 54°C. For inop ALS, increase LNAV/VNAV all Cats visibility to RVR 4500 and LNAV Cats C/D visibility to RVR 5500. Simultaneous approach authorized except from GAYLZ and JERLD.	MALSR 	MISSED APPROACH: Climb to 2000 then climbing left turn to 4000 direct BOWLR and hold.
---	-----------	---

D-ATIS 128.375	KANSAS CITY APP CON 120.95 318.1	INTERNATIONAL TOWER 128.2 254.25	GND CON 121.8	CLNC DEL 135.7	CPDLC
--------------------------	--	--	-------------------------	--------------------------	-------



CYPRE	VGSI and RNAV glidepath not coincident (VGSI Angle 3.00/TCH 78).	2000	4000	BOWLR
DASHI	WMP0W	JERZE	ZUGOR 2 NM to RW01L	0.9 NM to RW01L
6000	011°	5000	4000	2900
GP 3.00°	TCH 57	2900	1700	RW01L
3.1 NM	3.1 NM	3.5 NM	3.7 NM	1.1 NM
CATEGORY	A	B	C	D
LPV DA		1214/18	200 (200-½)	
LNAV/VNAV DA		1328/24	314 (400-½)	
LNAV MDA	1380/24	366 (400-½)	1380/35	366 (400-¾)
CIRCLING	1540-1	513 (600-1)	1540-1½	1580-2
			513 (600-½)	553 (600-2)



KANSAS CITY, MISSOURI
Amdt 4 29DEC22

39°18'N-94°43'W

KANSAS CITY INTL (MCI)
RNAV (GPS) Y RWY 1L

NC-3, 07 AUG 2025 to 04 SEP 2025

NC-3, 07 AUG 2025 to 04 SEP 2025