

KANSAS CITY, MISSOURI

AL-780 (FAA)

24081

WAAS CH 72908 W19B	APP CRS 191°	Rwy Idg 10801 TDZE 991 Apt Elev 1027
--	------------------------	---

RNAV (GPS) Y RWY 19R

KANSAS CITY INTL (MCI)

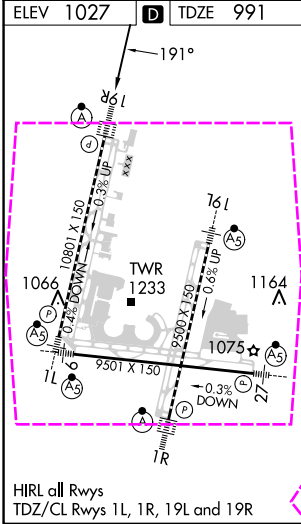
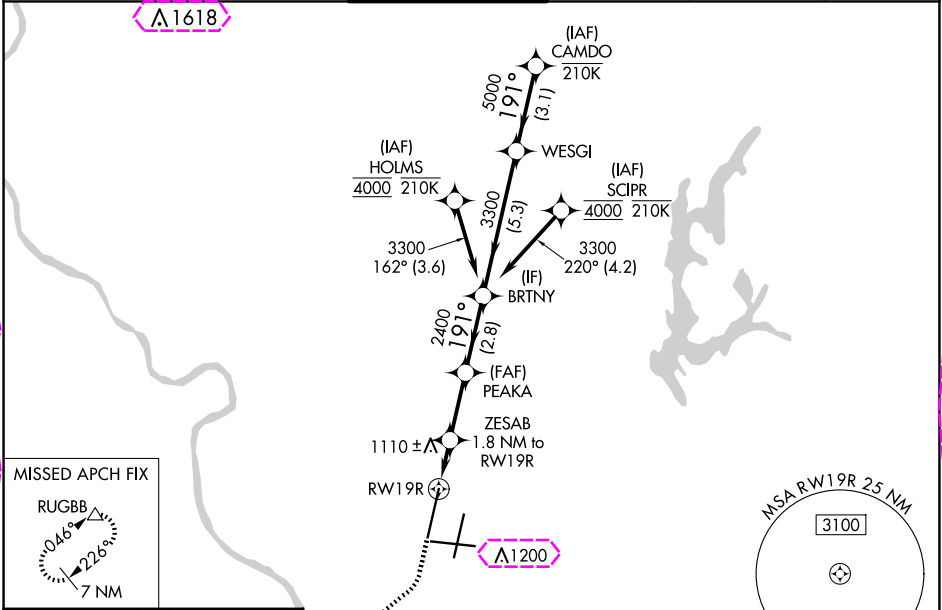
RNP APCH - GPS.

▼ LNAV procedure NA during simultaneous operations. Use of FD or AP required during simultaneous operations. For uncompensated Baro-VNAV systems, LNAV/VNAV NA below -21°C or above 54°C. For inop ALS, increase LNAV Cats C/D visibility to RVR 5500. Simultaneous approach authorized except from SCRP and HOLMS.

ALSF-2

MISSED APPROACH: Climb to 2000 then climbing right turn to 4000 direct RUGBB and hold.

D-ATIS 128.375	KANSAS CITY APP CON 120.95 318.1	INTERNATIONAL TOWER 128.2 254.25	GND CON 121.8	CLNC DEL 135.7	CPDLC
--------------------------	--	--	-------------------------	--------------------------	-------



ELEV 1027	D	TDZE 991
CATEGORY A B C D		
LPV DA 1191/18 200 (200-½)		
LNAV/VNAV DA 1417/40 426 (400-¾)		
LNAV MDA 1360/24 369 (400-½) 1360/35 369 (400-⅝)		
CIRCLING 1540-1 513 (600-1) 1540-1½ 513 (600-1½) 1580-2 553 (600-2)		

KANSAS CITY, MISSOURI

AL-780 (FAA)

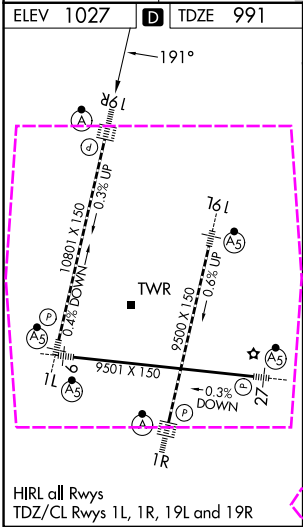
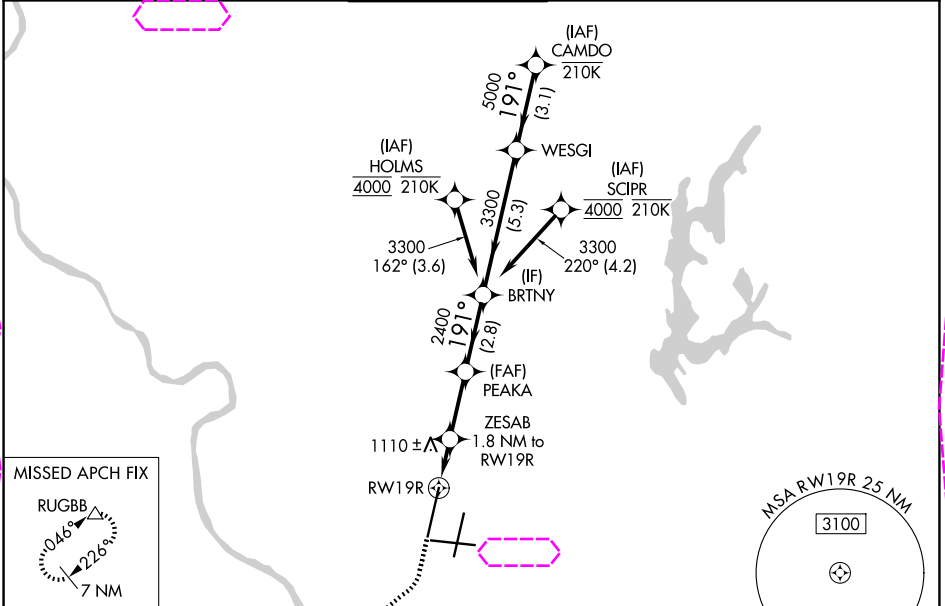
25219

WAAS CH 72908 W19B	APP CRS 191°	Rwy Ldg 10801 TDZE 991 Apt Elev 1027
--	------------------------	---

RNAV (GPS) Y RWY 19R

KANSAS CITY INTL (MCI)

RNP APCH - GPS. ⚠ LNAV procedure NA during simultaneous operations. Use of FD or AP required during simultaneous operations. For uncompensated Baro-VNAV systems, LNAV/VNAV NA below -21°C or above 54°C. For inop ALS, increase LNAV Cats C/D visibility to RVR 5500. Simultaneous approach authorized except from SCIPR and HOLMS.				ALSF-2 	MISSED APPROACH: Climb to 2000 then climbing right turn to 4000 direct RUGBB and hold.
D-ATIS 128.375	KANSAS CITY APP CON 120.95 318.1	INTERNATIONAL TOWER 128.2 254.25	GND CON 121.8	CLNC DEL 135.7	CPDLC



ELEV 1027 D TDZE 991		2000 4000 RUGBB VGSI and RNAV glidepath not coincident (VGSI Angle 3.00/TCH 80).		WESGI CAMDO	
		ZESAB 1.8 NM to RWY 19R PEAKA 2400 BRTNY 3300 WESGI 5000 CAMDO 6000		191°	
RWY 19R		0.9 NM to RWY 19R 0.9 NM to RWY 19R 2.5 NM 2.8 NM 5.3 NM 3.1 NM		1600 2400	
CATEGORY		A	B	C	D
LPV DA		1191/18		200 (200-½)	
LNAV/VNAV DA		1417/40		426 (400-¾)	
LNAV MDA		1360/24	369 (400-½)	1360/35	369 (400-⅝)
CIRCLING		1540-1	513 (600-1)	1540-1½ 513 (600-1½)	1580-2 553 (600-2)

NC-3, 07 AUG 2025 to 04 SEP 2025

NC-3, 07 AUG 2025 to 04 SEP 2025