

KANSAS CITY, MISSOURI


AL-780 (FAA)

24081

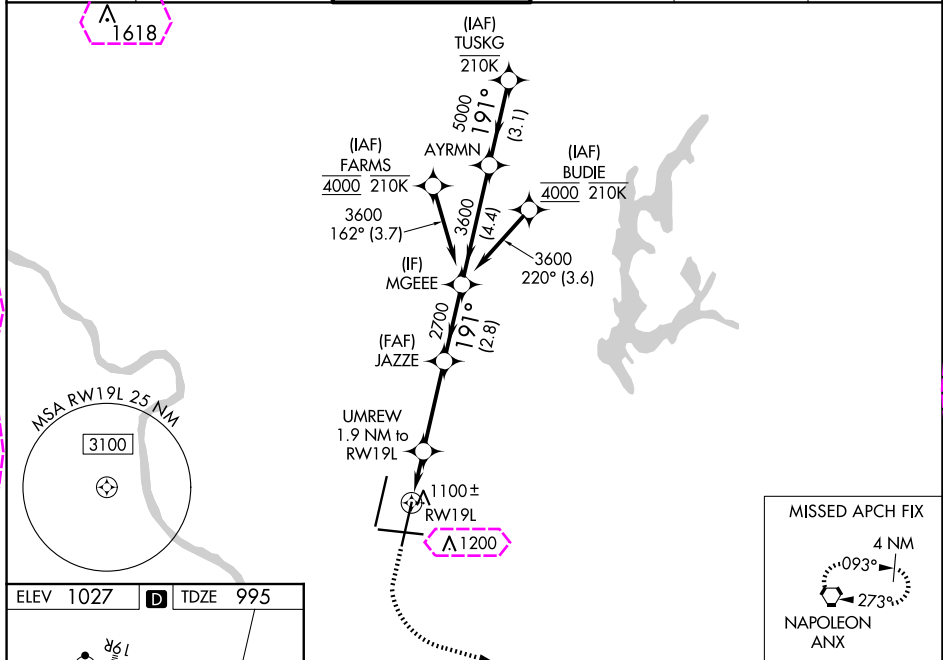
WAAS CH <b>82108</b> <b>W19A</b>	APP CRS <b>191°</b>	Rwy Idg <b>9500</b> TDZE <b>995</b> Apt Elev <b>1027</b>
--	------------------------	--

# RNAV (GPS) Y RWY 19L

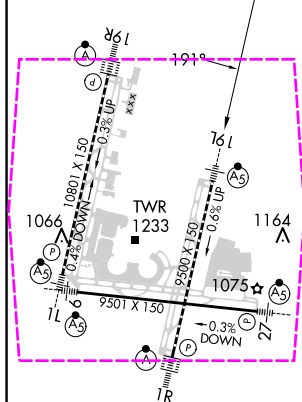
KANSAS CITY INTL (MCI)

RNP APCH - GPS. ▼ Use of FD or AP required during simultaneous operations. LNAV procedure NA during simultaneous operations. For uncompensated Baro-VNAV systems, LNAV/VNAV NA below -21°C or above 54°C. For inop ALS, increase LNAV/VNAV all Cats and LNAV Cats C/D visibility to RVR 5500. Simultaneous approach authorized except from BUDIE and FARMS.	MALSR 	MISSED APPROACH: Climb to 1500 then climbing left turn to 4000 direct ANX VORTAC and hold.
--	--	--

D-ATIS <b>128.375</b>	KANSAS CITY APP CON <b>120.95 318.1</b>	INTERNATIONAL TOWER <b>128.2 254.25</b>	GND CON <b>121.8</b>	CLNC DEL <b>135.7</b>	CPDLC
--------------------------	--	--	-------------------------	--------------------------	-------



ELEV 1027	D	TDZE 995
-----------	---	----------



HIRL all Rwy  
TDZ/CL Rwy 1L, 1R, 19R and 19L

1500 4000 ANX		JAZZE MGEE AYRMN TUSKG			
RW19L		UMREW 1.9 NM to RW19L	JAZZE 2700	MGEE 3600	AYRMN 5000
1 NM		0.9 NM	3.3 NM	2.8 NM	4.4 NM
CATEGORY		A	B	C	D
LPV DA		1195/18		200 (200-½)	
LNAV/VNAV DA		1365/35		370 (400-⅝)	
LNAV MDA		1360/24	365 (400-½)	1360/35	365 (400-⅝)
CIRCLING		1540-1	513 (600-1)	1540-1½ 513 (600-1½)	1580-2 553 (600-2)

KANSAS CITY, MISSOURI

Amdt 4 29DEC22

39°18'N-94°43'W

KANSAS CITY INTL (MCI)

# RNAV (GPS) Y RWY 19L

KANSAS CITY, MISSOURI

AL-780 (FAA)

25219

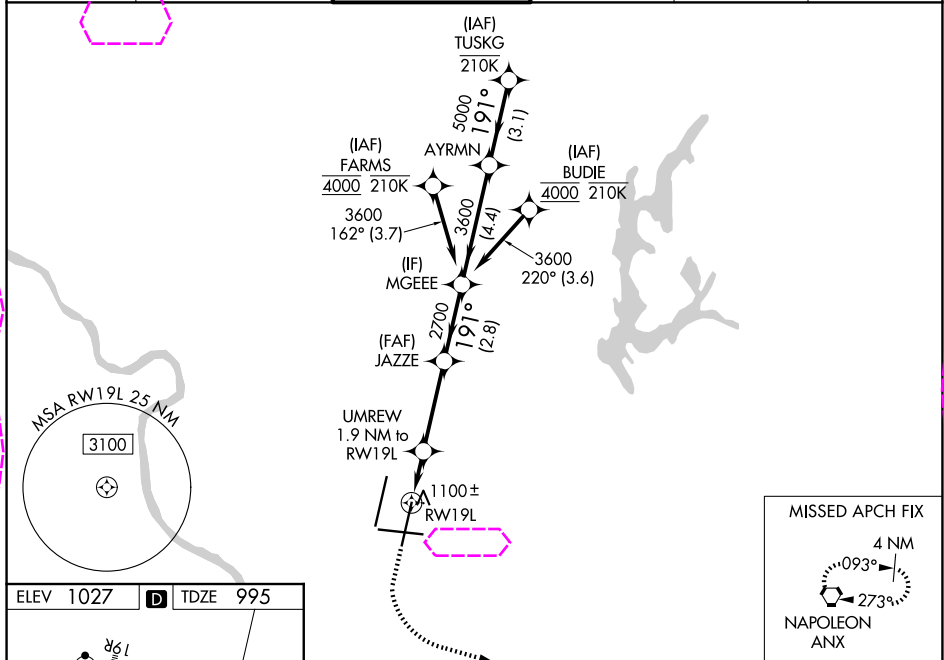
WAAS CH <b>82108</b> <b>W19A</b>	APP CRS <b>191°</b>	Rwy Ldg TDZE <b>995</b> Apt Elev <b>1027</b>
--	------------------------	--

# RNAV (GPS) Y RWY 19L

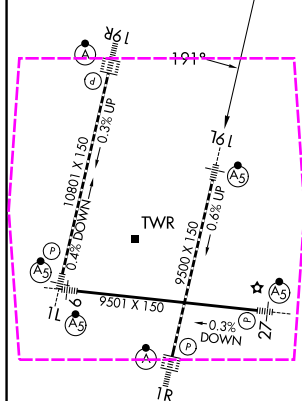
KANSAS CITY INTL (MCI)

RNP APCH - GPS.	MALS R	MISSED APPROACH: Climb to 1500 then climbing left turn to 4000 direct ANX VORTAC and hold.
▼ Use of FD or AP required during simultaneous operations. LNAV procedure NA during simultaneous operations. For uncompensated Baro-VNAV systems, LNAV/VNAV NA below -21°C or above 54°C. For inop ALS, increase LNAV/VNAV all Cats and LNAV Cats C/D visibility to RVR 5500. Simultaneous approach authorized except from BUDIE and FARMS.		

D-ATIS <b>128.375</b>	KANSAS CITY APP CON <b>120.95 318.1</b>	INTERNATIONAL TOWER <b>128.2 254.25</b>	GND CON <b>121.8</b>	CLNC DEL <b>135.7</b>	CPDLC
--------------------------	--	--	-------------------------	--------------------------	-------



ELEV <b>1027</b>	<b>D</b>	TDZE <b>995</b>
------------------	----------	-----------------



HIRL all Rwy  
TDZ/CL Rwy 1L, 1R, 19R and 19L

1500	4000	ANX	JAZZE	MGEEE	AYRMN	TUSKG
1 NM	0.9 NM	3.3 NM	2.8 NM	4.4 NM	3.1 NM	
1 NM	0.9 NM	3.3 NM	2.8 NM	4.4 NM	3.1 NM	
LPV DA	1195/18	200 (200-½)				
LNAV/VNAV DA	1365/35	370 (400-⅝)				
LNAV MDA	1360/24	365 (400-½)	1360/35	365 (400-⅝)		
CIRCLING	1540-1	513 (600-1)	1540-1½	513 (600-1½)	1580-2	553 (600-2)

KANSAS CITY, MISSOURI  
Amdt 4 29DEC22

39°18'N-94°43'W

KANSAS CITY INTL (MCI)  
RNAV (GPS) Y RWY 19L

NC-3, 07 AUG 2025 to 04 SEP 2025

NC-3, 07 AUG 2025 to 04 SEP 2025