

KANSAS CITY, MISSOURI

AL-780 (FAA)

25219

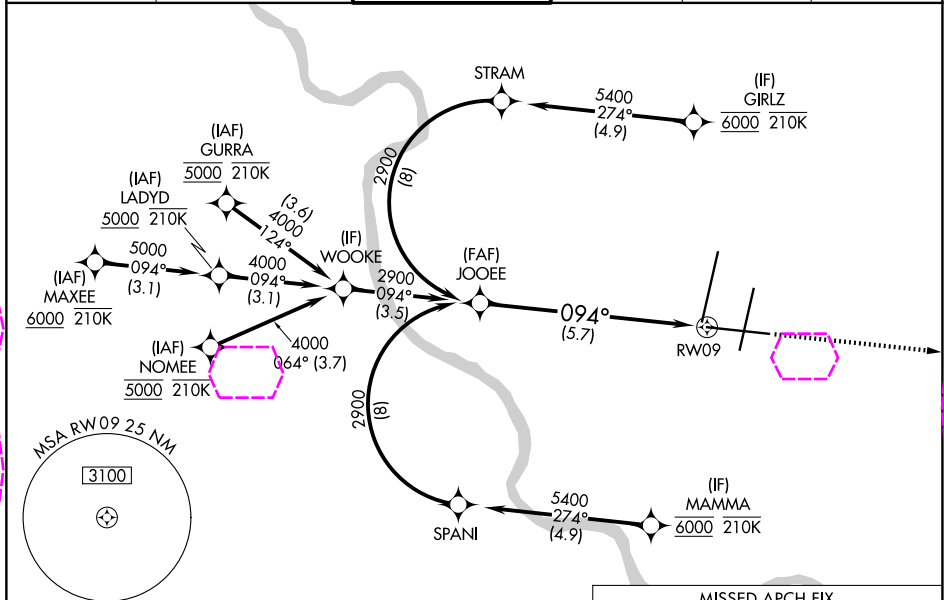
APP CRS 094°	Rwy Ldg 9501
	TDZE 1016
	Apt Elev 1027

RNAV (RNP) Z RWY 9

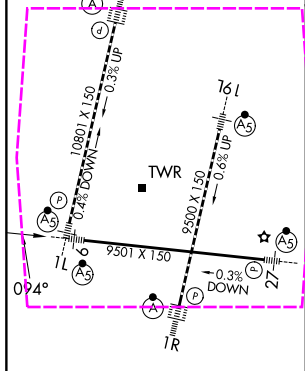
KANSAS CITY INTL (MCI)

RNP AR APCH - GPS.	MALSR 	MISSED APPROACH: Climb to 4000 direct DUSTN and on track 092° LYMES and hold.
▼ For uncompensated Baro-VNAV systems, procedure NA below -19°C or above 54°C. For inop ALS, increase RNP 0.20 all Cats visibility to RVR 4500; increase RNP 0.30 all Cats visibility to RVR 6000.		

D-ATIS 128.375	KANSAS CITY APP CON 120.95 318.1	INTERNATIONAL TOWER 128.2 254.25	GND CON 121.8	CLNC DEL 135.7	CPDLC
--------------------------	--	--	-------------------------	--------------------------	-------



ELEV 1027	D	TDZE 1016
-----------	---	-----------



HIRL all Rwys
TDZ/CL Rwys 1L, 1R, 19R and 19L

<p>JOOEE 2900</p> <p>2900</p> <p>GP 3.00° TCH 56</p>		<p>4000 ↑</p> <p>DUSTN ✦</p> <p>tr 092° ↗</p> <p>LYMES △</p>		
<p>See planview for multiple IF locations.</p> <p>094°</p> <p>5.7 NM</p> <p>RW09</p>				
CATEGORY	A	B	C	D
RNP 0.20 DA	1319/24		303 (300-½)	
RNP 0.30 DA	1418/40		402 (400-¾)	

AUTHORIZATION REQUIRED

KANSAS CITY, MISSOURI

Amdt 2 14JUL22

39°18'N-94°43'W

KANSAS CITY INTL (MCI)
RNP (RNP) Z RWY 9

NC-3, 07 AUG 2025 to 04 SEP 2025

NC-3, 07 AUG 2025 to 04 SEP 2025