

RNAV (RNP) Z RWY 27

KANSAS CITY, MISSOURI

AL-780 (FAA)

25219

APP CRS	Rwy Ldg	9501
274°	TDZE	1027
	Apt Elev	1027

RNAV (RNP) Z RWY 27

KANSAS CITY INTL (MCI)

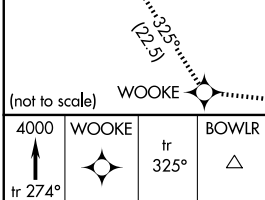
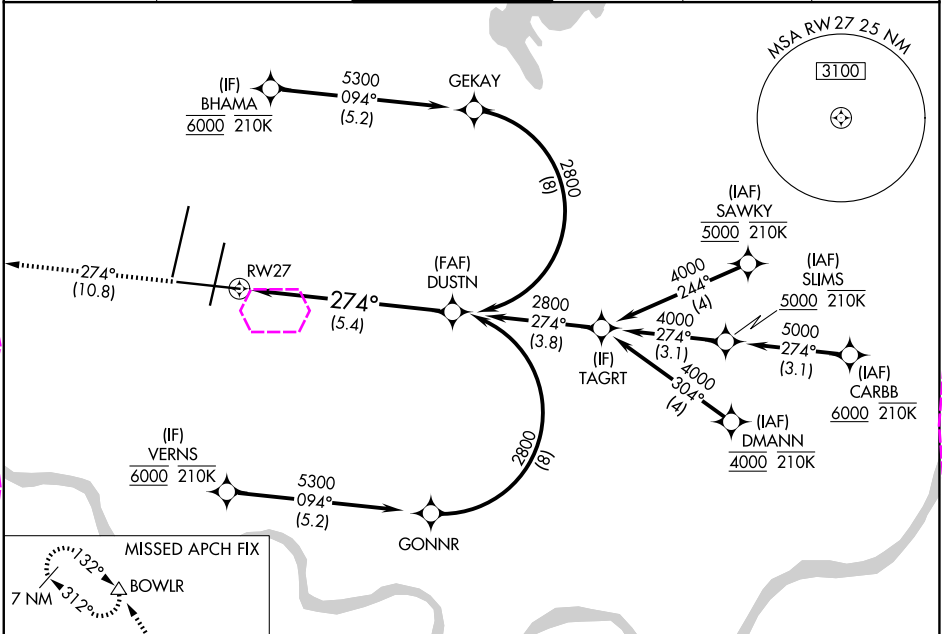
RADAR required for procedure entry. RNP AR APCH - GPS.

▼ For uncompensated Baro-VNAV systems, procedure NA below -19°C or above 54°C. For inop ALS, increase RNP 0.15 all Cats visibility to RVR 5500 and RNP 0.30 all Cats visibility to 1 3/8 SM.

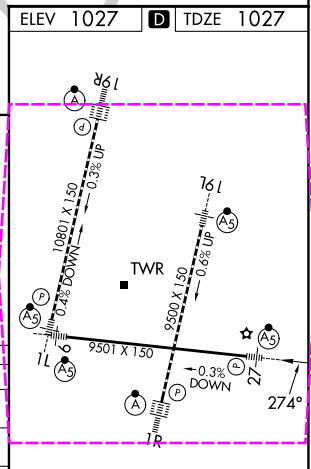
MALSR

MISSED APPROACH: Climb to 4000 on track 274° to WOOKIE and on track 325° to BOWLR and hold.

D-ATIS	KANSAS CITY APP CON	INTERNATIONAL TOWER	GND CON	CLNC DEL	CPDLC
128.375	120.95 318.1	128.2 254.25	121.8	135.7	



4000	WOOKIE	BOWLR
tr 274°	tr 325°	△
VGSI and RNAV glidepath not coincident (VGSI Angle 3.00/TCH 72).		
RW27		
See planview for multiple IF locations.		
5.4 NM		
CATEGORY	A	B
RNP 0.15 DA	1371/30	344 (400-%)
RNP 0.30 DA	1506/50	479 (500-1)



AUTHORIZATION REQUIRED

HIRL all Rwys
TDZ/CL Rwys 1L, 1R, 19R and 19L

KANSAS CITY, MISSOURI
Amdt 2 14JUL22

39°18'N-94°43'W

KANSAS CITY INTL (MCI)
RNAV (RNP) Z RWY 27

NC-3, 07 AUG 2025 to 04 SEP 2025

NC-3, 07 AUG 2025 to 04 SEP 2025