

APP CRS <b>011°</b>	Rwy Idg TDZE Apt Elev	<b>9500</b> <b>1017</b> <b>1027</b>
------------------------	-----------------------------	---

RNAV (RNP) Z RWY 1R  
KANSAS CITY INTL (MCI)

RNP AR APCH - GPS.

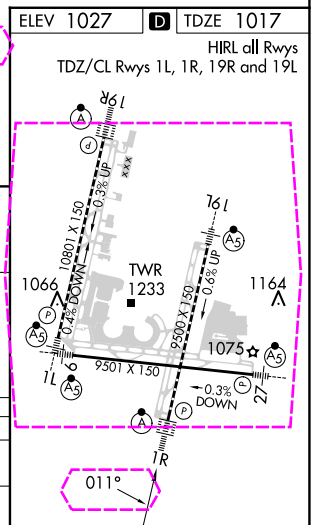
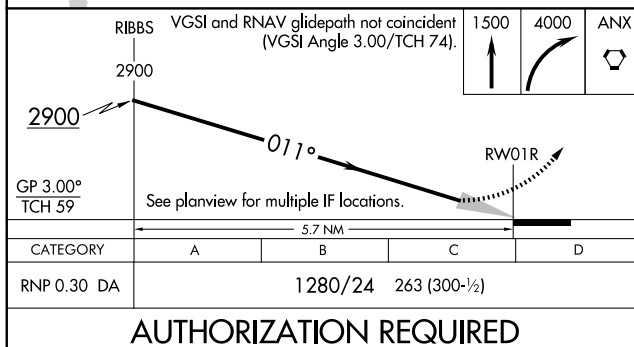
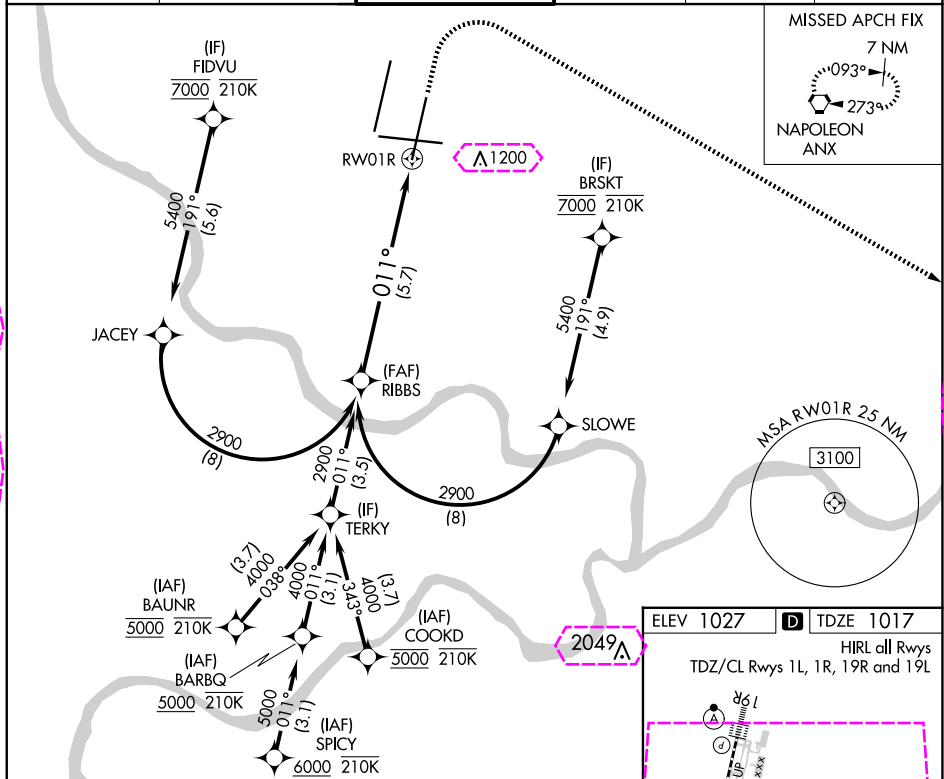
**T** Use of FD or AP required during simultaneous operations. For uncompensated Baro-VNAV systems, procedure NA below -19°C or above 54°C. Simultaneous approach authorized, except for arrivals at FIDVU, BRSKT, BAUNR and COOKD. For inop ALS, increase RNP 0.30 all Cats visibility to RVR 4500.

ALSF-2



**MISSED APPROACH:** Climb to 1500 then climbing right turn to 4000 direct ANX VORTAC and hold.

D-ATIS <b>128.375</b>	KANSAS CITY APP CON <b>120.95 318.1</b>	INTERNATIONAL TOWER <b>128.2 254.25</b>	GND CON <b>121.8</b>	CLNC DEL <b>135.7</b>	CPDLC
--------------------------	--	--	-------------------------	--------------------------	-------



KANSAS CITY, MISSOURI

Amdt 2 14JUL22

39°18'N-94°43'W

KANSAS CITY INTL (MCI)

RNAV (RNP) Z RWY 1R

NC-3, 10 JUL 2025 to 07 AUG 2025

NC-3, 10 JUL 2025 to 07 AUG 2025

KANSAS CITY, MISSOURI

AL-780 (FAA)

25219

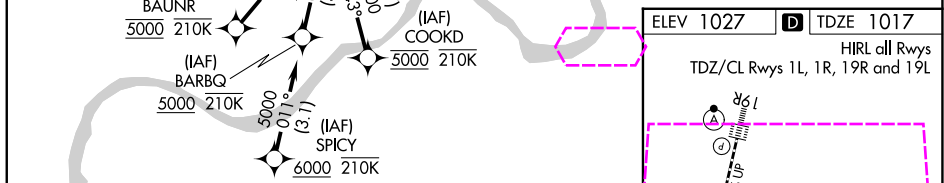
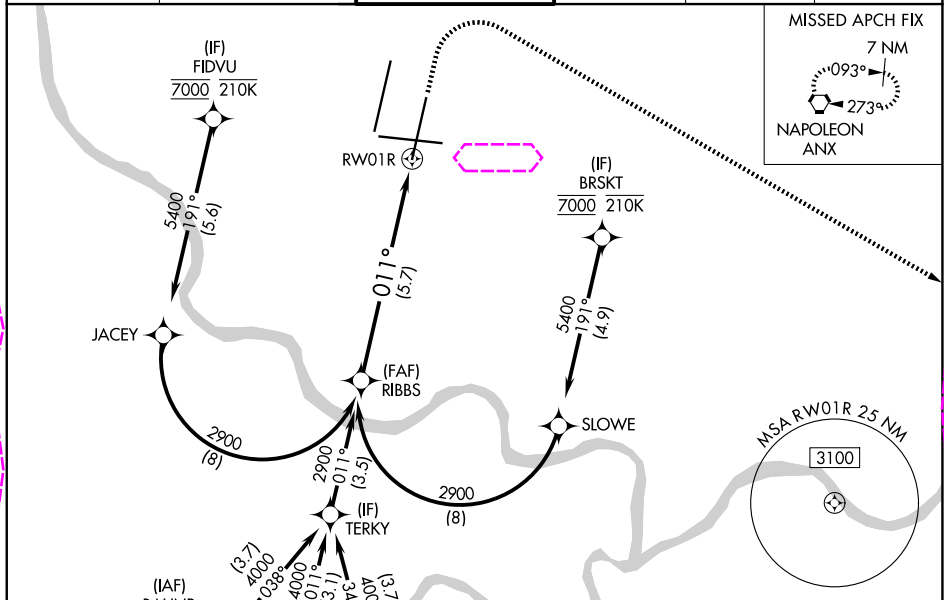
APP CRS	Rwy Ldg	9500
011°	TDZE	1017
	Apt Elev	1027

# RNAV (RNP) Z RWY 1R

KANSAS CITY INTL (MCI)

RNP AR APCH - GPS.	ALSF-2	MISSED APPROACH: Climb to 1500 then climbing right turn to 4000 direct ANX VORTAC and hold.
▼ Use of FD or AP required during simultaneous operations. For uncompensated Baro-VNAV systems, procedure NA below -19°C or above 54°C. Simultaneous approach authorized, except for arrivals at FIDVU, BRSKT, BAUNR and COOKD. For inop ALS, increase RNP 0.30 all Cats visibility to RVR 4500.		

D-ATIS 128.375	KANSAS CITY APP CON 120.95 318.1	INTERNATIONAL TOWER 128.2 254.25	GND CON 121.8	CLNC DEL 135.7	CPDLC
-------------------	-------------------------------------	-------------------------------------	------------------	-------------------	-------



GP 3.00° TCH 59	2900	011°	See planview for multiple IF locations.	5.7 NM	1500	4000	ANX
CATEGORY	A	B	C	D			
RNP 0.30 DA		1280/24	263 (300-1/2)				
AUTHORIZATION REQUIRED							

KANSAS CITY, MISSOURI

Amtd 2 14JUL22

39°18'N-94°43'W

KANSAS CITY INTL (MCI)

# RNAV (RNP) Z RWY 1R