

KANSAS CITY, MISSOURI

AL-780 (FAA)

24081

APP CRS	Rwy Idg	10801
011°	TDZE	1014
	Apt Elev	1027

RNAV (RNP) Z RWY 1L

KANSAS CITY INTL (MCI)

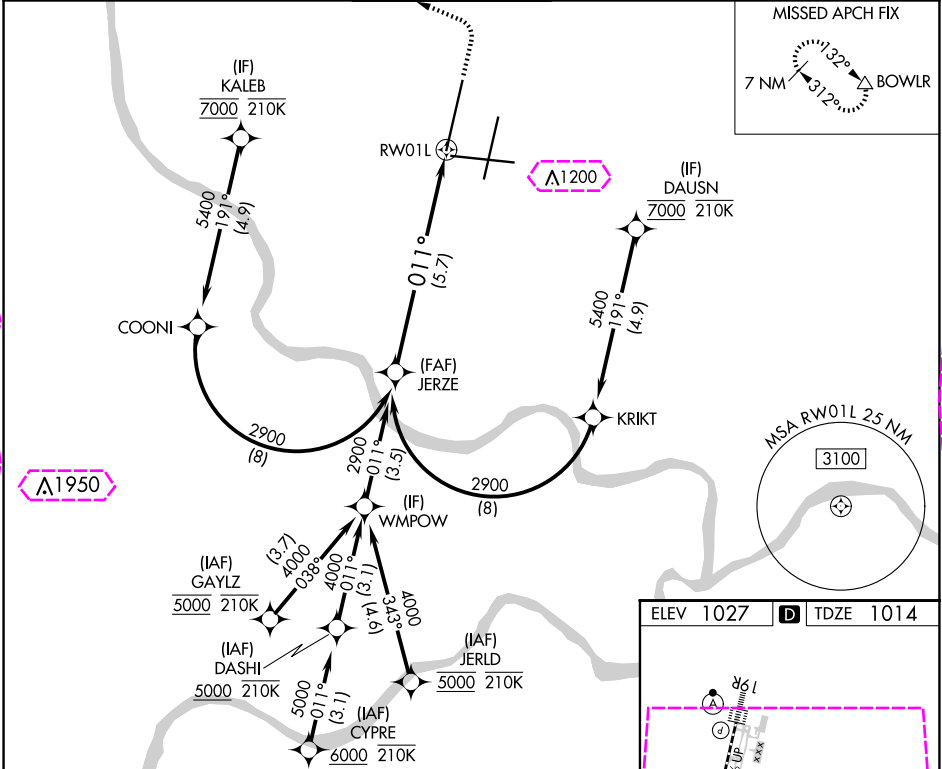
RNP AR APCH - GPS.

Use of FD or AP required during simultaneous operations. For uncompensated Baro-VNAV systems, procedure NA below -19°C or above 54°C. For inop ALS, increase RNP 0.10 all Cats visibility to RVR 4000 and RNP 0.30 all Cats visibility to RVR 6000. Simultaneous approach authorized, except for arrivals at KALEB, DAUSN, GAYLZ and JERLD.

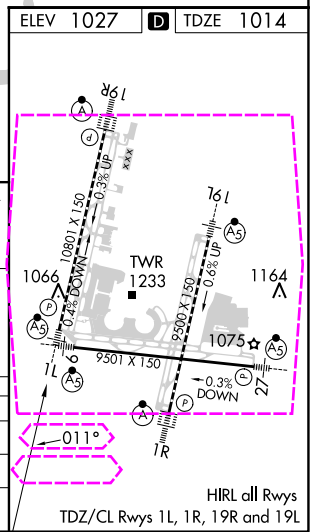
MALSR

MISSED APPROACH: Climb to 2000 then climbing left turn to 4000 direct BOWLR and hold.

D-ATIS	KANSAS CITY APP CON	INTERNATIONAL TOWER	GND CON	CLNC DEL	CPDLC
128.375	120.95 318.1	128.2 254.25	121.8	135.7	



VGSi and RNAV glidepath not coincident (VGSi Angle 3.00/TCH 78).				<div>2000 ↑</div>		<div>4000 ↷</div>		<div>BOWL △</div>	
JERZE 2900		<div>011°</div> <div>See planview for multiple IF locations.</div> <div>5.7 NM</div> <div>RW01L</div>							
<div>2900</div> <div>GP 3.00° TCH 57</div>									
CATEGORY		A		B		C		D	
RNP 0.10 DA				1264/24		250 (300-½)			
RNP 0.30 DA				1418/40		404 (400-¾)			
AUTHORIZATION REQUIRED									



KANSAS CITY, MISSOURI

AL-780 (FAA)

25219

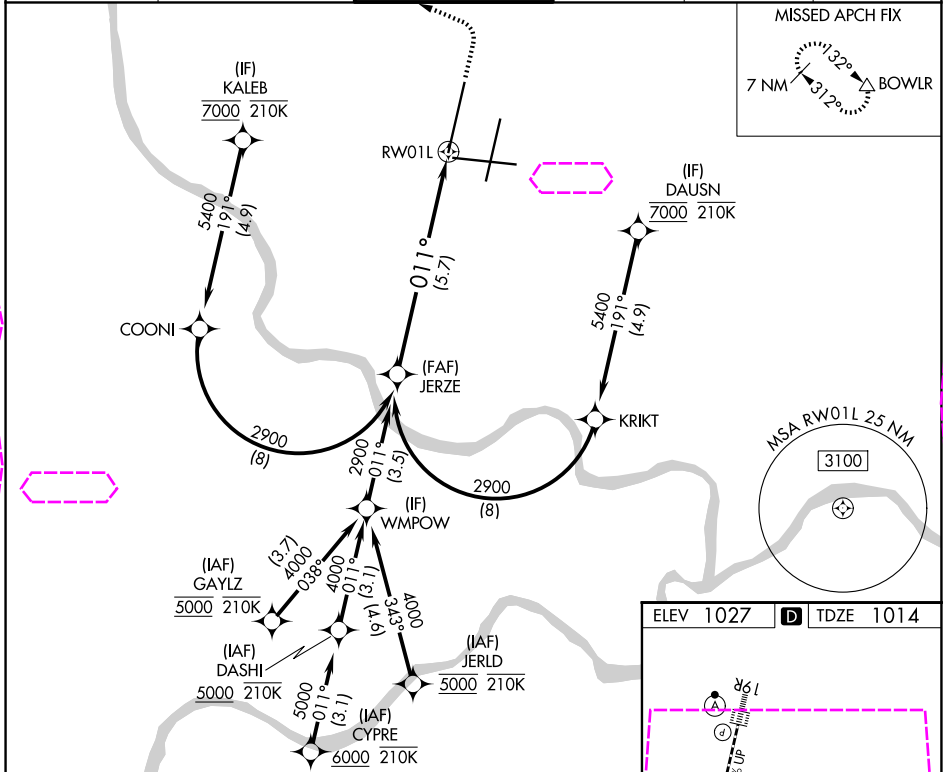
APP CRS	Rwy Ldg	10801
011°	TDZE	1014
	Apt Elev	1027

RNAV (RNP) Z RWY 1L

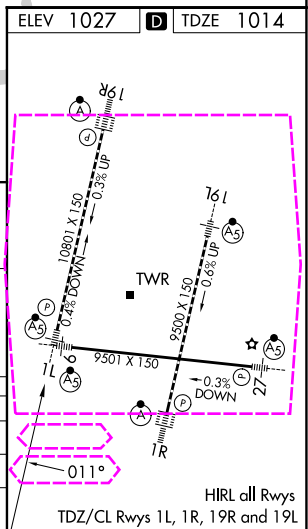
KANSAS CITY INTL (MCI)

RNP AR APCH - GPS.	MALSR	MISSED APPROACH: Climb to 2000 then climbing left turn to 4000 direct BOWLR and hold.
Use of FD or AP required during simultaneous operations. For uncompensated Baro-VNAV systems, procedure NA below -19°C or above 54°C. For inop ALS, increase RNP 0.10 all Cats visibility to RVR 4000 and RNP 0.30 all Cats visibility to RVR 6000. Simultaneous approach authorized, except for arrivals at KALEB, DAUSN, GAYLZ and JERLD.		

D-ATIS	KANSAS CITY APP CON	INTERNATIONAL TOWER	GND CON	CLNC DEL	CPDLC
128.375	120.95 318.1	128.2 254.25	121.8	135.7	



VGSi and RNAV glidepath not coincident (VGSi Angle 3.00/TCH 78).			
2000 4000 BOWLR			
GP 3.00° TCH 57			
See planview for multiple IF locations.			
5.7 NM			
CATEGORY	A	B	C
RNP 0.10 DA	1264/24	250 (300-½)	
RNP 0.30 DA	1418/40	404 (400-¾)	
AUTHORIZATION REQUIRED			



KANSAS CITY, MISSOURI
Amdt 2 14JUL22

39°18'N-94°43'W

KANSAS CITY INTL (MCI)
RNP (RNP) Z RWY 1L

NC-3, 07 AUG 2025 to 04 SEP 2025

NC-3, 07 AUG 2025 to 04 SEP 2025