

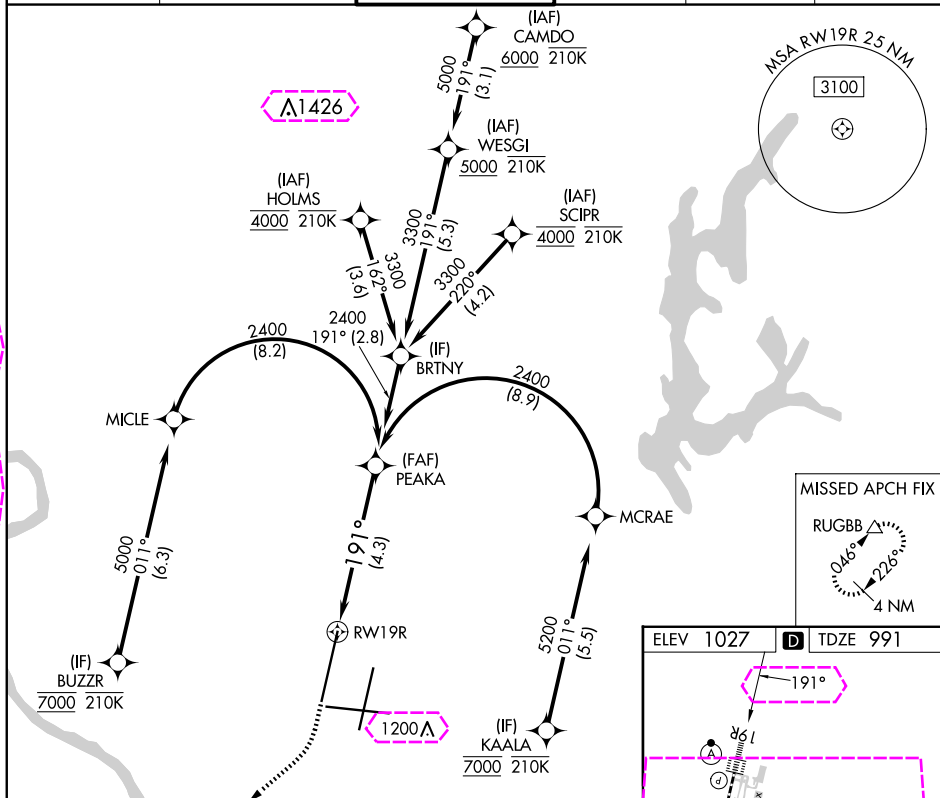


APP CRS 191°	Rwy Idg TDZE Apt Elev	10801 991 1027
------------------------	-----------------------------	---

RNAV (RNP) Z RWY 19R
KANSAS CITY INTL (MCI)

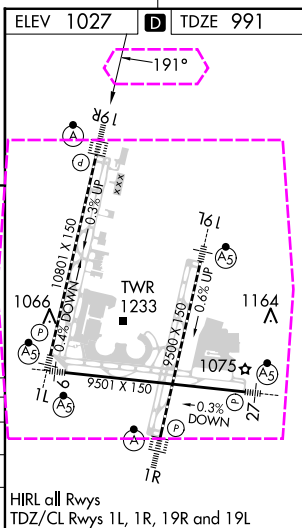
RADAR required for procedure entry. RNP AR APCH - GPS.  For uncompensated Baro-VNAV systems, procedure NA below -21°C or above 54°C. Simultaneous approach authorized, except for arrivals at BUZZR, HOLMS, SCIPR, and KAAALA. For inop ALS, increase RNP 0.15 all Cats visibility to RVR 4500 and RNP 0.30 all Cats visibility RVR 6000.			ALSF-2 	MISSED APPROACH: Climb to 2000 then climbing right turn to 4000 direct RUGBB and hold.	
D-ATIS 128.375	KANSAS CITY APP CON 120.95 318.1	INTERNATIONAL TOWER 128.2 254.25	GND CON 121.8	CLNC DEL 135.7	CPDLC



See planview for multiple IF locations.
VGSI and RNAV glidepath not coincident
(VGSI Angle 3.00/TCH 80).

CATEGORY	A	B	C	D
RNP 0.15 DA	1287/24	296 (300-½)		
RNP 0.30 DA	1405/40	414 (400-¾)		

AUTHORIZATION REQUIRED



KANSAS CITY, MISSOURI



AL-780 (FAA)

25219

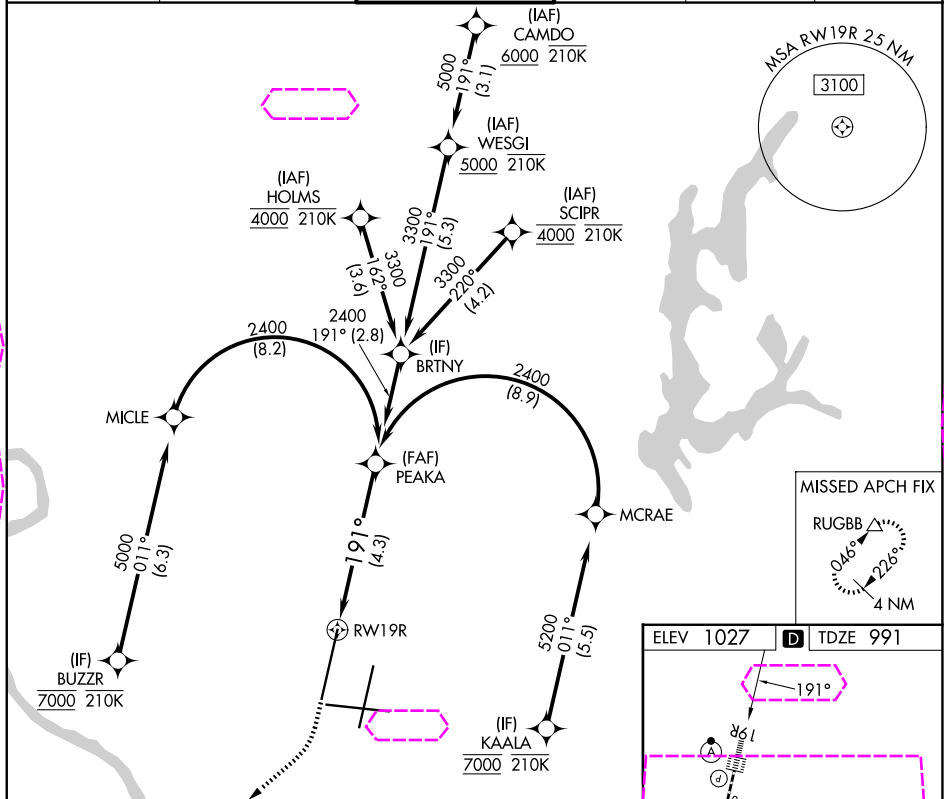
APP CRS	Rwy Ldg	10801
191°	TDZE	991
	Apt Elev	1027


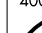


RNAV (RNP) Z RWY 19R

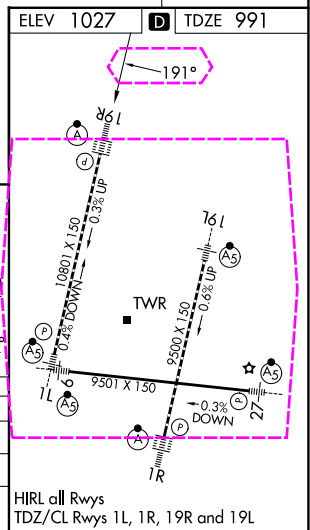
KANSAS CITY INTL (MCI)

RADAR required for procedure entry. RNP AR APCH - GPS.		ALSIF-2 	MISSED APPROACH: Climb to 2000 then climbing right turn to 4000 direct RUGBB and hold.
	For uncompensated Baro-VNAV systems, procedure NA below -21°C or above 54°C. Simultaneous approach authorized, except for arrivals at BUZZR, HOLMS, SCIPR, and KAALA. For inop ALS, increase RNP 0.15 all Cats visibility to RVR 4500 and RNP 0.30 all Cats visibility RVR 6000.		

D-ATIS 128.375	KANSAS CITY APP CON 120.95 318.1	INTERNATIONAL TOWER 128.2 254.25	GND CON 121.8	CLNC DEL 135.7	CPDLC
-------------------	-------------------------------------	-------------------------------------	------------------	-------------------	-------



2000	4000	RUGBB	See planview for multiple IF locations. VGSi and RNAV glidepath not coincident (VGSi Angle 3.00/TCH 80).	PEAKA
				2400
				
CATEGORY	A	B	C	D
RNP 0.15 DA	1287/24 296 (300-½)			
RNP 0.30 DA	1405/40 414 (400-¾)			
AUTHORIZATION REQUIRED				



KANSAS CITY, MISSOURI
Amdt 2 14JUL22

39°18'N-94°43'W

KANSAS CITY INTL (MCI)
RNAV (RNP) Z RWY 19R

NC-3, 07 AUG 2025 to 04 SEP 2025

NC-3, 07 AUG 2025 to 04 SEP 2025