

KANSAS CITY, MISSOURI

AL-780 (FAA)

24081

APP CRS	Rwy Idg	9500
191°	TDZE	995
	Apt Elev	1027


RNAV (RNP) Z RWY 19L

KANSAS CITY INTL (MCI)

RNP AR APCH - GPS.

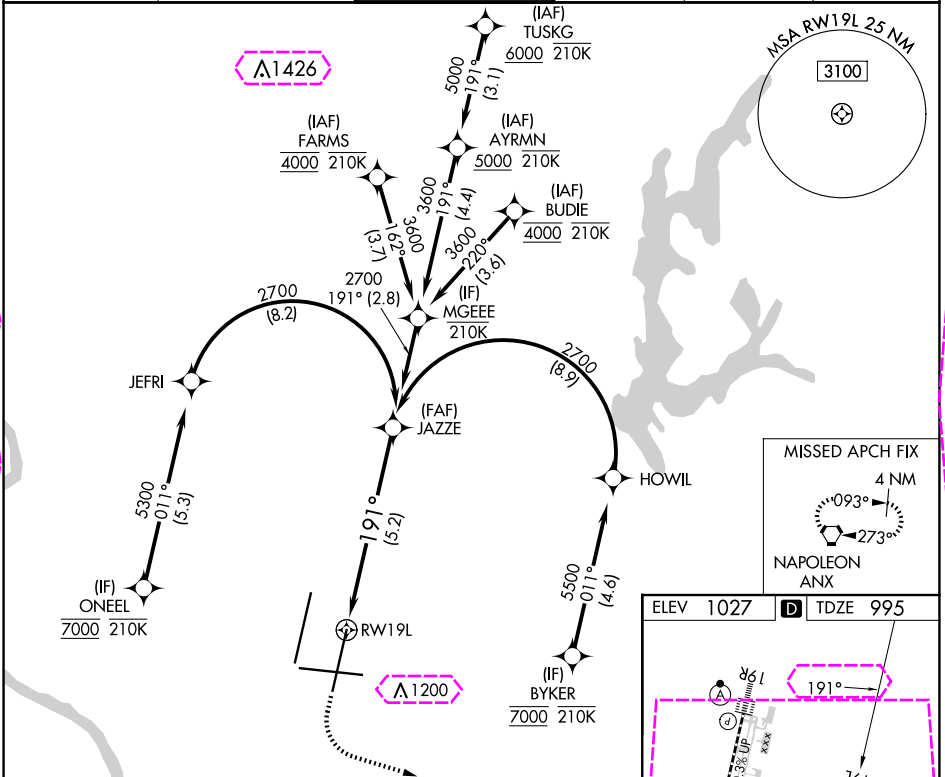
▼ Use of FD or AP required during simultaneous operations. For uncompensated Baro-VNAV systems, procedure NA below -21°C or above 54°C. Simultaneous approach authorized, except for arrivals at ONEEL, BYKER, FARMS and BUDIE. For inop ALS, increase RNP 0.20 all Cats visibility to RVR 4500 and RNP 0.30 all Cats visibility to RVR 5500.

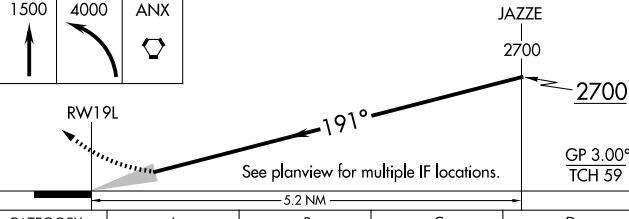
MALSR

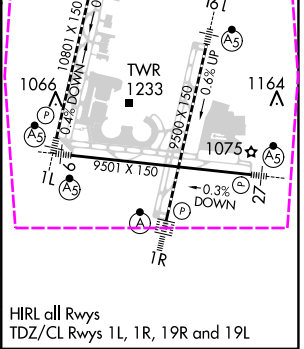


MISSED APPROACH: Climb to 1500 then climbing left turn to 4000 direct ANX VORTAC and hold.

D-ATIS 128.375	KANSAS CITY APP CON 120.95 318.1	INTERNATIONAL TOWER 128.2 254.25	GND CON 121.8	CLNC DEL 135.7	CPDLC
-------------------	-------------------------------------	-------------------------------------	------------------	-------------------	-------



1500	4000	ANX		
↑	↖	⬡		
				
CATEGORY	A	B	C	D
RNP 0.20 DA	1310/24 315 (300-½)			
RNP 0.30 DA	1365/35 370 (400-¾)			
AUTHORIZATION REQUIRED				



KANSAS CITY, MISSOURI



AL-780 (FAA)

25219

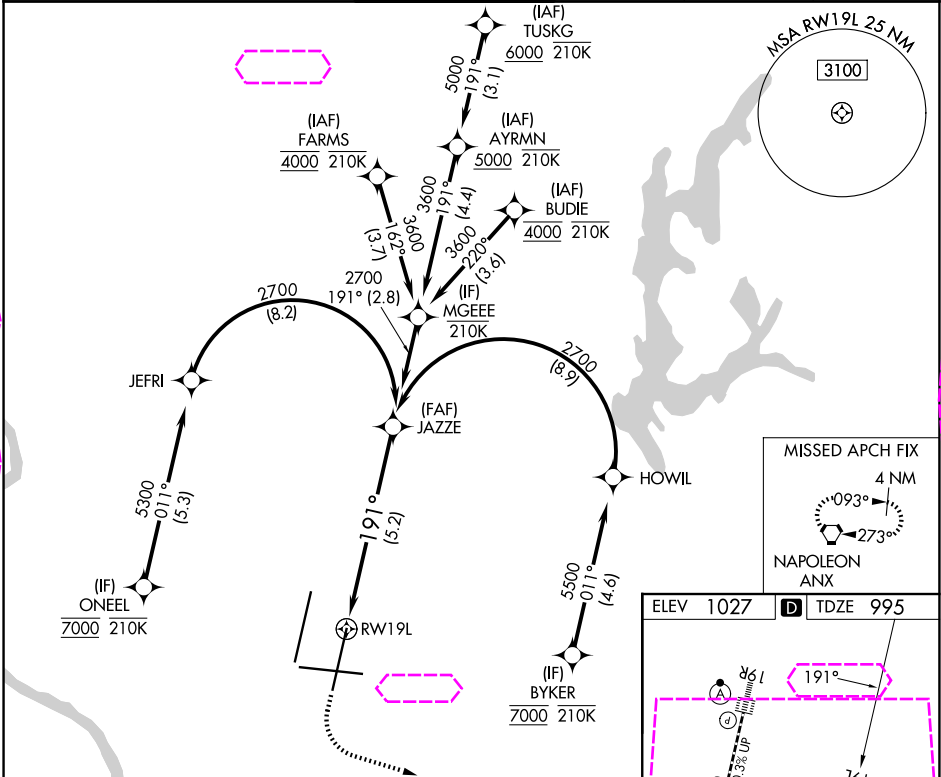
APP CRS	Rwy Ldg	9500
191°	TDZE	995
	Apt Elev	1027

RNAV (RNP) Z RWY 19L

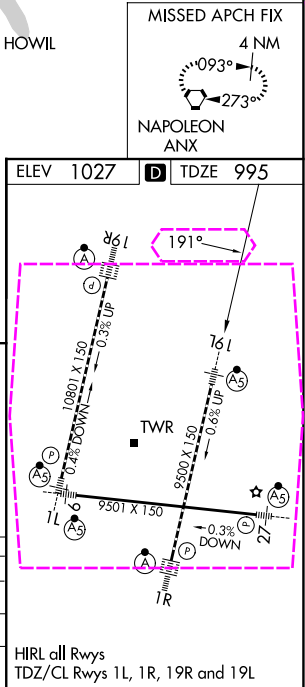
KANSAS CITY INTL (MCI)

RNP AR APCH - GPS.		<div>MALSR</div> <div></div>	MISSED APPROACH: Climb to 1500 then climbing left turn to 4000 direct ANX VORTAC and hold.
<div></div>	Use of FD or AP required during simultaneous operations. For uncompensated Baro-VNAV systems, procedure NA below -21°C or above 54°C. Simultaneous approach authorized, except for arrivals at ONEEL, BYKER, FARMS and BUDIE. For inop ALS, increase RNP 0.20 all Cats visibility to RVR 4500 and RNP 0.30 all Cats visibility to RVR 5500.		

D-ATIS 128.375	KANSAS CITY APP CON 120.95 318.1	INTERNATIONAL TOWER 128.2 254.25	GND CON 121.8	CLNC DEL 135.7	CPDLC
-------------------	-------------------------------------	-------------------------------------	------------------	-------------------	-------



1500	4000	ANX	JAZZE	
			2700	
RWY19L		2700		
		GP 3.00° TCH 59		
See planview for multiple IF locations.				
CATEGORY	A	B	C	D
RNP 0.20 DA	1310/24 315 (300-½)			
RNP 0.30 DA	1365/35 370 (400-¾)			
AUTHORIZATION REQUIRED				



KANSAS CITY, MISSOURI
Amdt 2 14JUL22

39°18'N-94°43'W

RNAV (RNP) Z RWY 19L

NC-3, 07 AUG 2025 to 04 SEP 2025

NC-3, 07 AUG 2025 to 04 SEP 2025