


ILS or LOC RWY 9
KANSAS CITY INTL (MCI)

MISSED APPROACH: Climb to 4000 on
MCI R-089 to LYMES INT/MCI 29.2
DME and hold.

ALTERNATE MISSED	GURRA, NOME, ADDIV and HADIL transitions NA for Cat E.
------------------	--

FILEV 1027 

KEEGA
180K

SPAN1

4700
281° (1.5)

274
(4.9)

3.25 MCl
R-089
an 79(Y)

269°
089°

Knots	60	90	120	150	180
Min:Sec	5:42	3:48	2:51	2:17	1:54

S-LOC 9	1460/40 444 (500-¾)	1460/45 444 (500-⅞)	
CIRCLING	1540-1 513 (600-1)	1540-1½	1580-2 553 (600-2)

KANSAS CITY INTL (MCI)
ILS or LOC RWY 9

KANSAS CITY, MISSOURI

AL-780 (FAA)

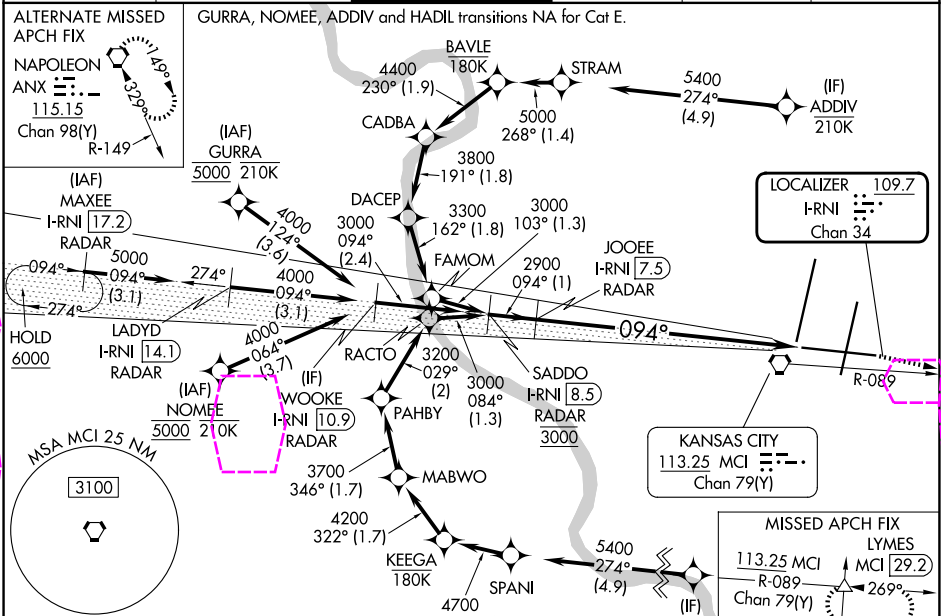
25219

LOC/DME I-RNI 109.7 Chan 34	APP CRS 094°	Rwy Ldg TDZE Apt Elev 9501 1016 1027
---	------------------------	--

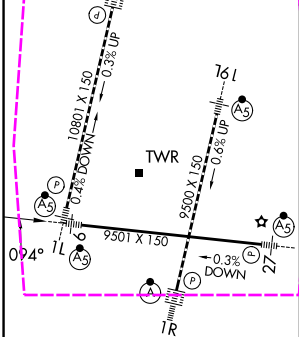
ILS or LOC RWY 9
KANSAS CITY INTL (MCI)

RNP APCH-GPS. From GURRA or NOME or ADDIV or HADIL. DME or RADAR required. RADAR required for procedure entry at MAXEE.	MALSR 	MISSED APPROACH: Climb to 4000 on MCI R-089 to LYMES INT/MCI 29.2 DME and hold.
Inop table does not apply to S-ILS 9. For inop ALS, increase S-LOC 9 Cats A/B visibility to RVR 5500 and S-LOC 9 Cat E visibility to 1 3/4 SM.		

D-ATIS 128.375	KANSAS CITY APP CON 120.95 318.1	INTERNATIONAL TOWER 128.2 254.25	GND CON 121.8	CLNC DEL 135.7	CPDLC
--------------------------	--	--	-------------------------	--------------------------	-------



ELEV 1027	TDZE 1016
TDZ/CL Rwy's 1L, 1R, 19L and 19R HIRL all Rwy's	



FAF to MAP 5.7 NM					
Knots	60	90	120	150	180
Min:Sec	5:42	3:48	2:51	2:17	1:54

GS 3.00° TCH 56				
--------------------	--	--	--	--

KANSAS CITY, MISSOURI
Amdt 17 10AUG23

39°18'N-94°43'W

KANSAS CITY INTL (MCI)
ILS or LOC RWY 9