

KANSAS CITY, MISSOURI

AL-780 (FAA)

24137

LOC/DME I-UYQY 109.7 Chan 34	APP CRS 274°	Rwy Idg 9501 TDZE 1027 Apt Elev 1027
--	------------------------	---

ILS or LOC RWY 27

KANSAS CITY INTL (MCI)

RNP APCH - GPS. From DMANN or SAWKY or MURPE or TADAE.

DME or RADAR required.

For inop ALS, increase S-ILS 27 Cat E visibility to RVR 4000 and S-LOC 27 Cat C/D/E visibility to RVR 5500.

*RVR 1800 authorized with use of FD or AP or HUD to DA.

MALSR



MISSED APPROACH: Climb to 1600 then climbing left turn to 4000 on heading 230° and MCI R-223 to RUGBB INT/MCI 25 DME and hold.

D-ATIS 128.375	KANSAS CITY APP CON 120.95 318.1	INTERNATIONAL TOWER 128.2 254.25	GND CON 121.8	CLNC DEL 135.7	CPDLC
--------------------------	--	--	-------------------------	--------------------------	-------

DMANN, SAWKY, MURPE, and TADAE transitions NA for Cat E.

ALTERNATE MISSED

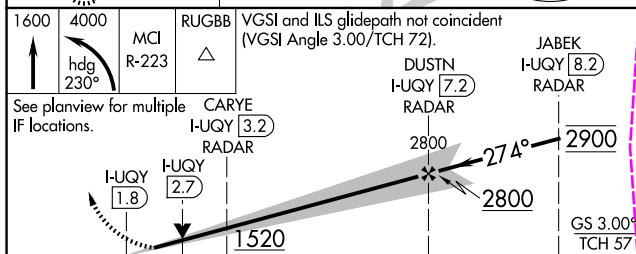
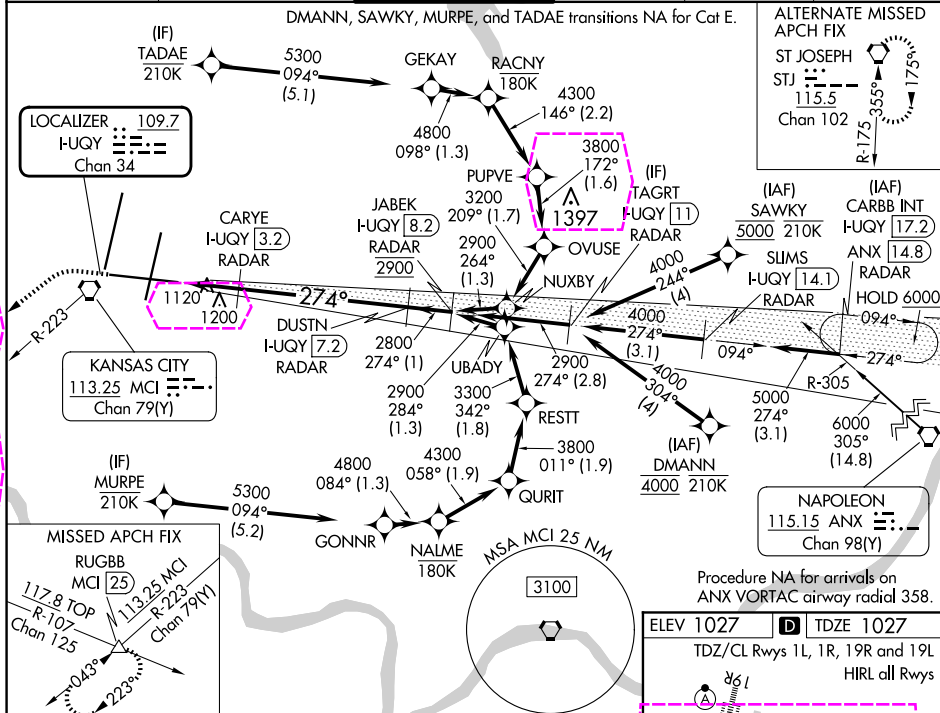
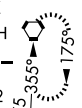
APCH FIX

ST JOSEPH

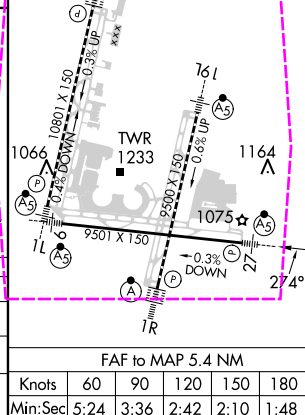
STJ

115.5

Chan 102



CATEGORY	A	B	C	D	E
S-ILS 27*	1227/24 200 (200-½)				
S-LOC 27	1380/24	353 (400-½)	1380/30	353 (400-¾)	
CIRCLING	1540-1	513 (600-1)	1540-1½ 513 (600-1½)	1580-2	553 (600-2)



KANSAS CITY, MISSOURI

Amdt 7 10AUG23

39°18'N-94°43'W

KANSAS CITY INTL (MCI)

ILS or LOC RWY 27

KANSAS CITY, MISSOURI

AL-780 (FAA)

25219

LOC/DME I-UYQY 109.7 Chan 34	APP CRS 274°	Rwy Ldg 9501 TDZE 1027 Apt Elev 1027
--	------------------------	---

ILS or LOC RWY 27

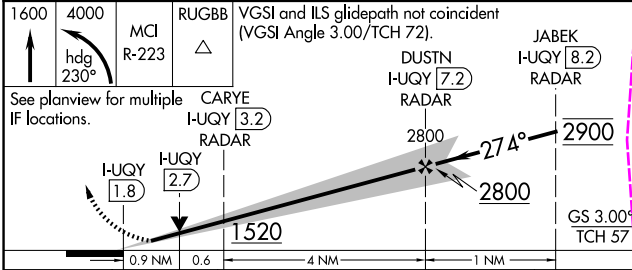
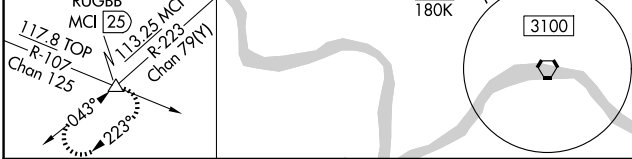
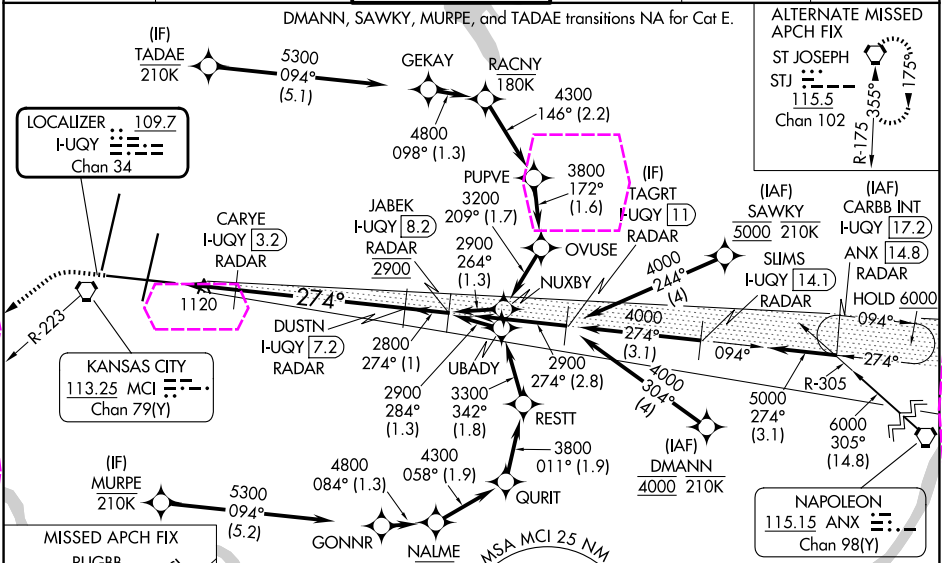
KANSAS CITY INTL (MCI)

RNP APCH - GPS. From DMANN or SAWKY or MURPE or TADAE.
DME or RADAR required.

MALSR

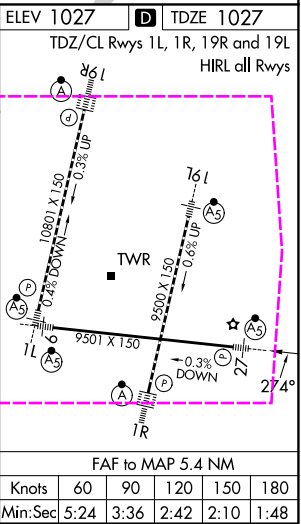
MISSED APPROACH: Climb to 1600 then climbing left turn to 4000 on heading 230° and MCI R-223 to RUGBB INT/MCI 25 DME and hold.

D-ATIS 128.375	KANSAS CITY APP CON 120.95 318.1	INTERNATIONAL TOWER 128.2 254.25	GND CON 121.8	CLNC DEL 135.7	CPDLC
--------------------------	--	--	-------------------------	--------------------------	-------



CATEGORY	A	B	C	D	E
S-ILS 27*	1227/24 200 (200-½)				
S-LOC 27	1380/24	353 (400-½)	1380/30	353 (400-¾)	
CIRCLING	1540-1	513 (600-1)	1540-1½	513 (600-1½)	1580-2 553 (600-2)

Procedure NA for arrivals on ANX VORTAC airway radial 358.



KANSAS CITY, MISSOURI
Amdt 7 10AUG23

39°18'N-94°43'W

KANSAS CITY INTL (MCI)
ILS or LOC RWY 27

NC-3, 07 AUG 2025 to 04 SEP 2025

NC-3, 07 AUG 2025 to 04 SEP 2025