

KANSAS CITY, MISSOURI

AL-780 (FAA)

24081

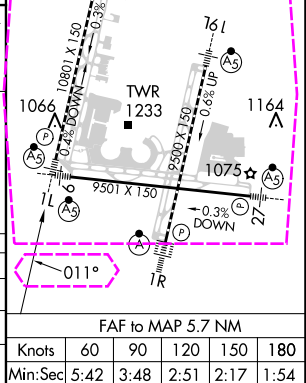
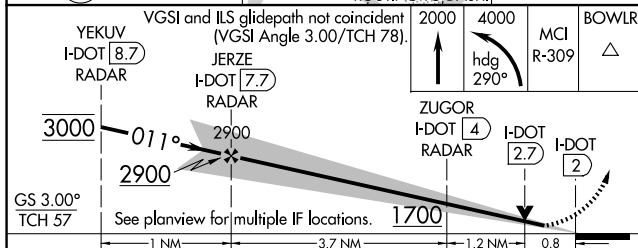
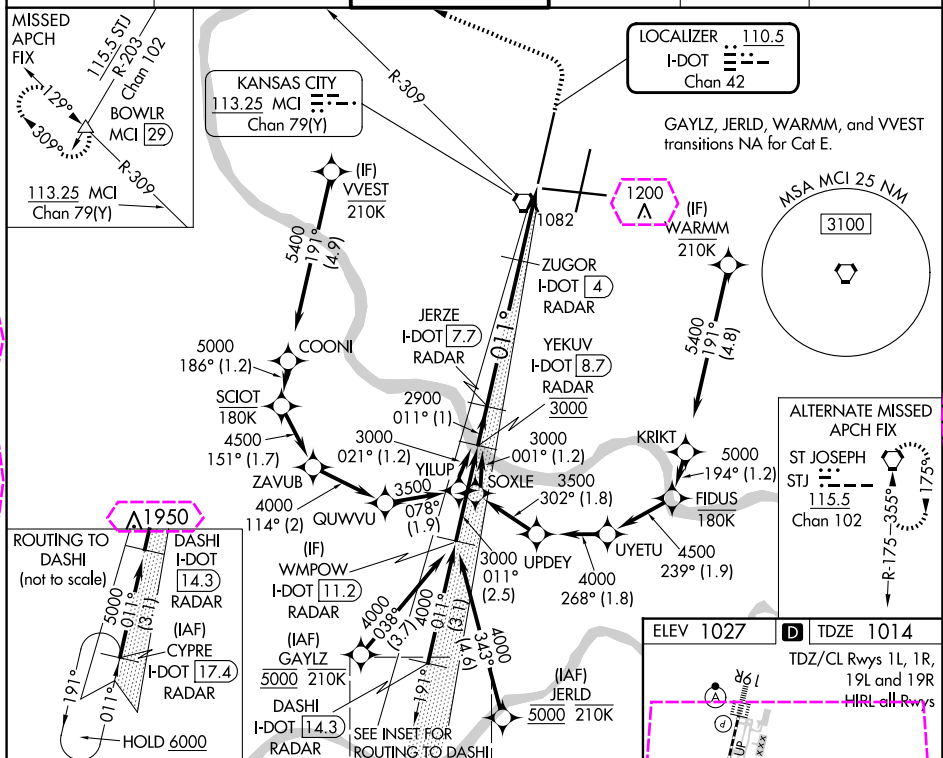
LOC/DME I-DOT 110.5 Chan 42	APP CRS 011°	Rwy Idg 10801 TDZE 1014 Apt Elev 1027
---	------------------------	--

ILS or LOC RWY 1L

KANSAS CITY INTL (MCI)

RNP APCH - GPS. From GAYLZ or JERLD or WARMW or VVEST.	MALSR	MISSED APPROACH: Climb to 2000 then climbing left turn to 4000 on heading 290° and MCI R-309 to BOWLW INT/MCI 29 DME and hold.
DME or RADAR required. RADAR required for procedure entry at CYPRE.		
▼ For inop ALS, increase S-ILS 1L Cat E visibility to RVR 4000 and S-LOC 1L Cat E visibility to RVR 5000. Simultaneous approach authorized except from GAYLZ, JERLD, VVEST, and WARMW.		

D-ATIS 128.375	KANSAS CITY APP CON 120.95 318.1	INTERNATIONAL TOWER 128.2 254.25	GND CON 121.8	CLNC DEL 135.7	CPDLC
--------------------------	--	--	-------------------------	--------------------------	-------



CATEGORY	A	B	C	D	E
S-ILS 1L	1214/18 200 (200-½)				
S-LOC 1L	1340/24 326 (400-½)	1340/26 326 (400-½)			
CIRCLING	1540-1 513 (600-1)	1540-1½ 513 (600-½)	1580-2 553 (600-2)		

FAF to MAP 5.7 NM					
Knots	60	90	120	150	180
Min:Sec	5:42	3:48	2:51	2:17	1:54

KANSAS CITY, MISSOURI
Amdt 19A 30NOV23

39°18'N-94°43'W

KANSAS CITY INTL (MCI)

ILS or LOC RWY 1L

KANSAS CITY, MISSOURI

AL-780 (FAA)

25219

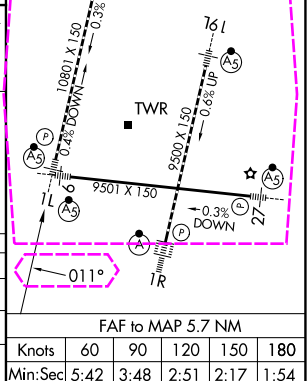
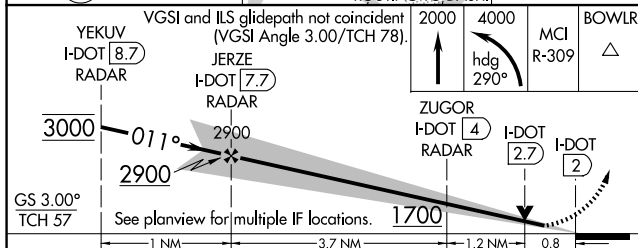
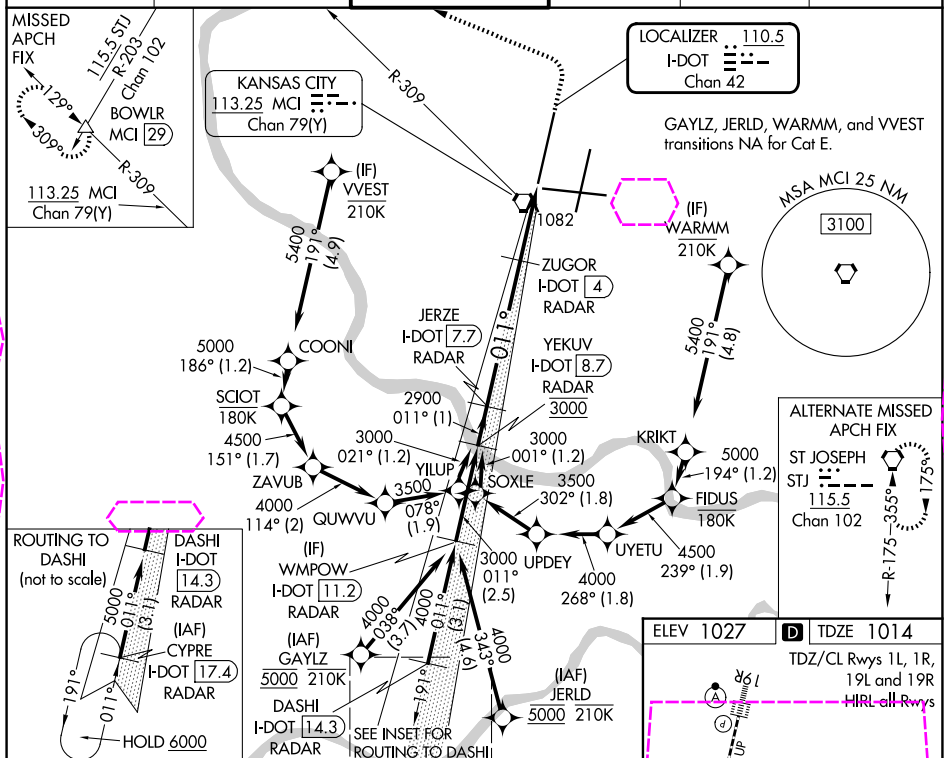
LOC/DME I-DOT 110.5 Chan 42	APP CRS 011°	Rwy Ldg TDZE 1014 Apt Elev 1027
---	------------------------	---

ILS or LOC RWY 1L

KANSAS CITY INTL (MCI)

RNP APCH - GPS. From GAYLZ or JERLD or WARMM or VVEST.	MALSR	MISSED APPROACH: Climb to 2000 then climbing left turn to 4000 on heading 290° and MCI R-309 to BOWL R INT/MCI 29 DME and hold.
DME or RADAR required. RADAR required for procedure entry at CYPRE.		
For inop ALS, increase S-ILS 1L Cat E visibility to RVR 4000 and S-LOC 1L Cat E visibility to RVR 5000. Simultaneous approach authorized except from GAYLZ, JERLD, VVEST, and WARMM.		

D-ATIS 128.375	KANSAS CITY APP CON 120.95 318.1	INTERNATIONAL TOWER 128.2 254.25	GND CON 121.8	CLNC DEL 135.7	CPDLC
--------------------------	--	--	-------------------------	--------------------------	-------



CATEGORY	A	B	C	D	E
S-ILS 1L	1214/18 200 (200-1/2)				
S-LOC 1L	1340/24 326 (400-1/2)	1340/26 326 (400-1/2)			
CIRCLING	1540-1 513 (600-1)	1540-1 1/2 513 (600-1 1/2)	1580-2 553 (600-2)		

FAF to MAP 5.7 NM					
Knots	60	90	120	150	180
Min:Sec	5:42	3:48	2:51	2:17	1:54

KANSAS CITY, MISSOURI
Amdt 19A 30NOV23

39°18'N-94°43'W

KANSAS CITY INTL (MCI)
ILS or LOC RWY 1L

NC-3, 07 AUG 2025 to 04 SEP 2025

NC-3, 07 AUG 2025 to 04 SEP 2025