

KANSAS CITY, MISSOURI

AL-780 (FAA)

24137

LOC/DME I-DYH <b>109.55</b> Chan <b>32</b> (Y)	APP CRS <b>191°</b>	Rwy Idg <b>9500</b> TDZE <b>995</b> Apt Elev <b>1027</b>
--	------------------------	--

# ILS or LOC RWY 19L

KANSAS CITY INTL (MCI)

RNP APCH - GPS. From FARMS or BUDIE or MYLLA or TOBRE.

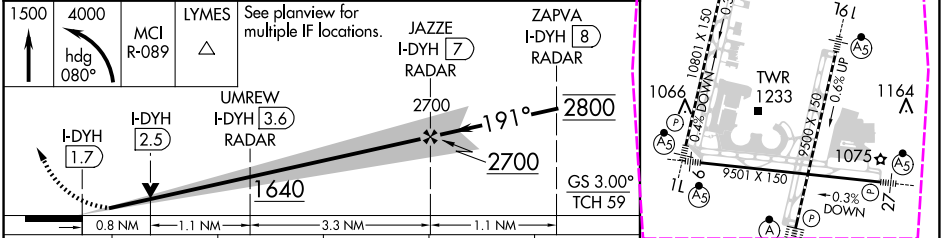
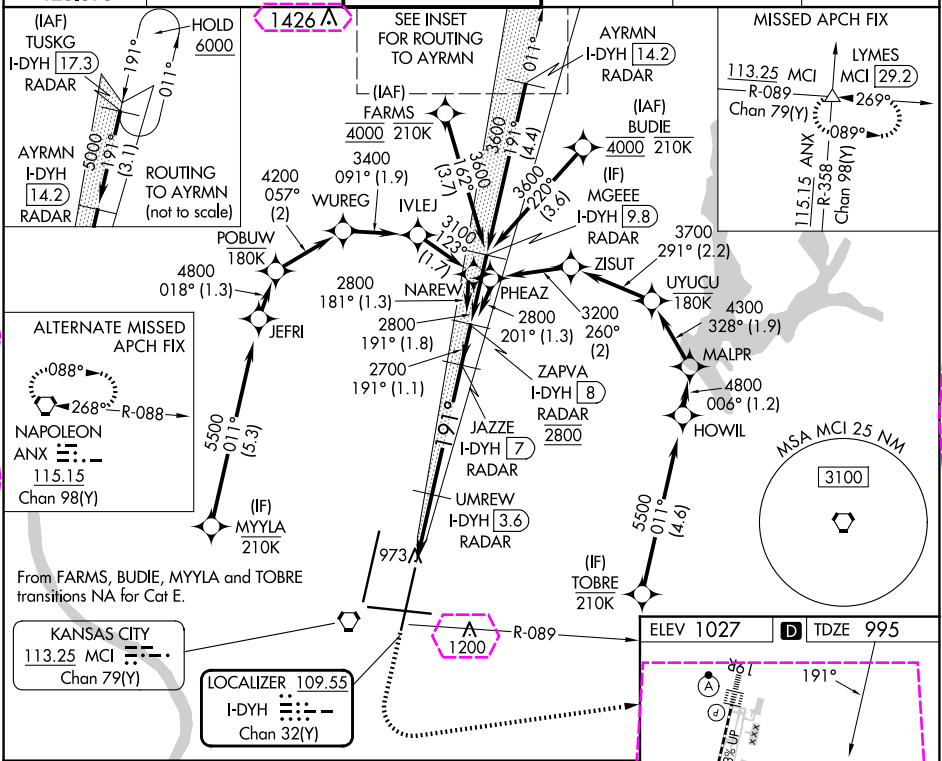
DME or RADAR required. RADAR required for procedure entry at TUSKG.

For inop ALS, increase S-ILS 19L Cat E visibility to RVR 4000 and S-LOC 19L Cat C/D/E visibility to RVR 4500. Simultaneous approach authorized except from BUDIE, FARMS, TOBRE, and MYLLA.

MALSR

MISSED APPROACH: Climb to 1500 then climbing left turn to 4000 on heading 080° and MCI VORTAC R-089 to LYMES INT/ MCI 29.2 DME and hold.

D-ATIS <b>128.375</b>	KANSAS CITY APP CON <b>120.95 318.1</b>	INTERNATIONAL TOWER <b>128.2 254.25</b>	GND CON <b>121.8</b>	CLNC DEL <b>135.7</b>	CPDLC
--------------------------	--	--	-------------------------	--------------------------	-------



CATEGORY	A	B	C	D	E
S-ILS 19L	1195/18	200 (200-½)			
S-LOC 19L	1280/24	285 (300-½)			
CIRCLING	1540-1 513 (600-1)	1540-1½ 513 (600-1½)	1580-2 553 (600-2)		

HIRL all Rwy's

TDZ/CL Rwy's 1L, 1R, 19L and 19R

FAF to MAP 5.2 NM

Knots	60	90	120	150	180
Min:Sec	5:12	3:28	2:36	2:05	1:44

KANSAS CITY, MISSOURI  
Amdt 5A 30NOV23

39°18'N-94°43'W

KANSAS CITY INTL (MCI)  
ILS or LOC RWY 19L

NC-3, 10 JUL 2025 to 07 AUG 2025

NC-3, 10 JUL 2025 to 07 AUG 2025

KANSAS CITY, MISSOURI

AL-780 (FAA)

25219

LOC/DME I-DYH <b>109.55</b> Chan <b>32</b> (Y)	APP CRS <b>191°</b>	Rwy Ldg <b>9500</b> TDZE <b>995</b> Apt Elev <b>1027</b>
--	------------------------	--

# ILS or LOC RWY 19L

KANSAS CITY INTL (MCI)

RNP APCH - GPS. From FARMS or BUDIE or MYLLA or TOBRE.

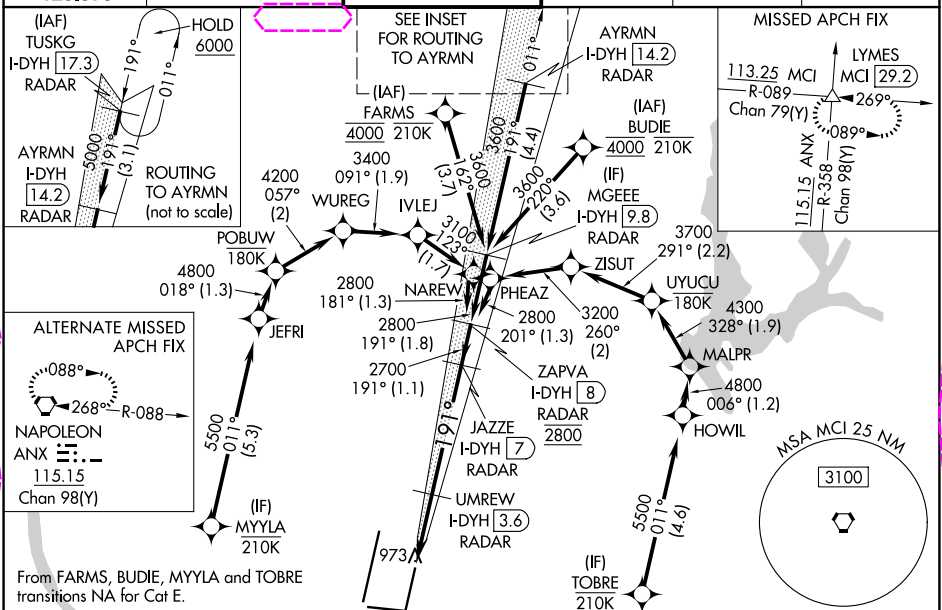
DME or RADAR required. RADAR required for procedure entry at TUSKG.

For inop ALS, increase S-ILS 19L Cat E visibility to RVR 4000 and S-LOC 19L Cat C/D/E visibility to RVR 4500. Simultaneous approach authorized except from BUDIE, FARMS, TOBRE, and MYLLA.

MALSR

MISSED APPROACH: Climb to 1500 then climbing left turn to 4000 on heading 080° and MCI VORTAC R-089 to LYMES INT/ MCI 29.2 DME and hold.

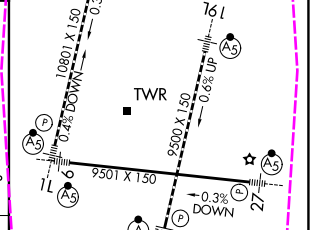
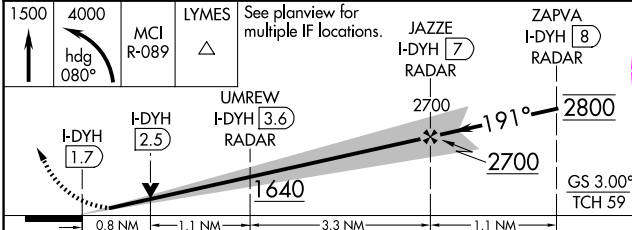
D-ATIS <b>128.375</b>	KANSAS CITY APP CON <b>120.95 318.1</b>	INTERNATIONAL TOWER <b>128.2 254.25</b>	GND CON <b>121.8</b>	CLNC DEL <b>135.7</b>	CPDLC
--------------------------	--	--	-------------------------	--------------------------	-------



KANSAS CITY  
113.25 MCI  
Chan 79(Y)

LOCALIZER 109.55  
I-DYH  
Chan 32(Y)

ELEV 1027 TDZE 995



CATEGORY	A	B	C	D	E
S-ILS 19L		1195/18	200 (200-½)		
S-LOC 19L		1280/24	285 (300-½)		
CIRCLING	1540-1	513 (600-1)	1540-1½ 513 (600-1½)	1580-2	553 (600-2)

HIRL all Rwy's  
TDZ/CL Rwy's 1L, 1R, 19L and 19R  
FAF to MAP 5.2 NM

Knots	60	90	120	150	180
Min:Sec	5:12	3:28	2:36	2:05	1:44

KANSAS CITY, MISSOURI  
Amdt 5A 30NOV23

39°18'N-94°43'W

KANSAS CITY INTL (MCI)  
ILS or LOC RWY 19L

NC-3, 07 AUG 2025 to 04 SEP 2025

NC-3, 07 AUG 2025 to 04 SEP 2025