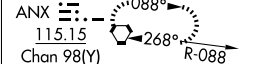


ILS RWY 1R (SA CAT I)
KANSAS CITY INTL (MCI)

MISSED APPROACH: Climb to 1500 then climbing right turn to 4000 direct ANX VORTAC and hold. (TACAN aircraft) Climb to 1500 then climbing right turn to 4000 on heading 130° and MCI R-089 to LYMES INT/ MCI 29.2 DME and hold.

GN
12

MISSED APCH FIX

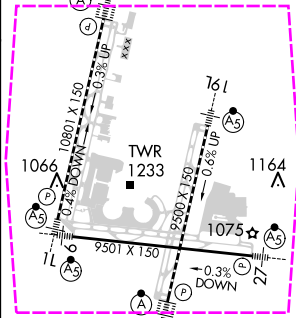
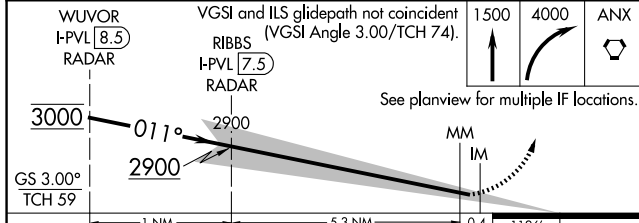


1



LOCALIZER 110.75
I-PVL
Chan 44(Y)

HELAN
210K



CATEGORY	A	B	C	D	E
S-ILS 1R	RA 161/14 150 RA 1167				

SA CATEGORY I ILS - SPECIAL AIRCREW
& AIRCRAFT CERTIFICATION REQUIRED

KANSAS CITY, MISSOURI

AL-780 (FAA)

25219

LOC/DME I-PVL 110.75 Chan 44 (Y)	APP CRS 011°	Rwy Ldg TDZE 1017 Apt Elev 1027
--	------------------------	---

ILS RWY 1R (SA CAT I)

KANSAS CITY INTL (MCI)

RNP APCH - GPS. From BAUNR or COOKD or WUZBY or HELAN.

DME or RADAR required. RADAR required for procedure entry at SPICY.

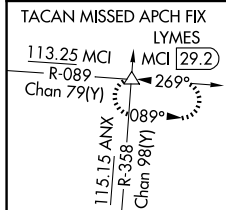
ALS-F-2



Requires specific OPSPEC, MSPEC, or LOA approval. Simultaneous approach authorized except from BAUNR, COOKD, WUZBY, and HELAN.

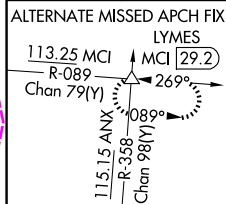
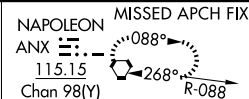
MISSED APPROACH: Climb to 1500 then climbing right turn to 4000 direct ANX VORTAC and hold. (TACAN aircraft) Climb to 1500 then climbing right turn to 4000 on heading 130° and MCI R-089 to LYMES INT/ MCI 29.2 DME and hold.

D-ATIS 128.375	KANSAS CITY APP CON 120.95 318.1	INTERNATIONAL TOWER 128.2 254.25	GND CON 121.8	CLNC DEL 135.7	CPDLC
--------------------------	--	--	-------------------------	--------------------------	-------

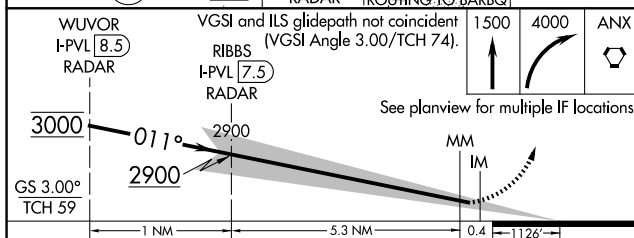
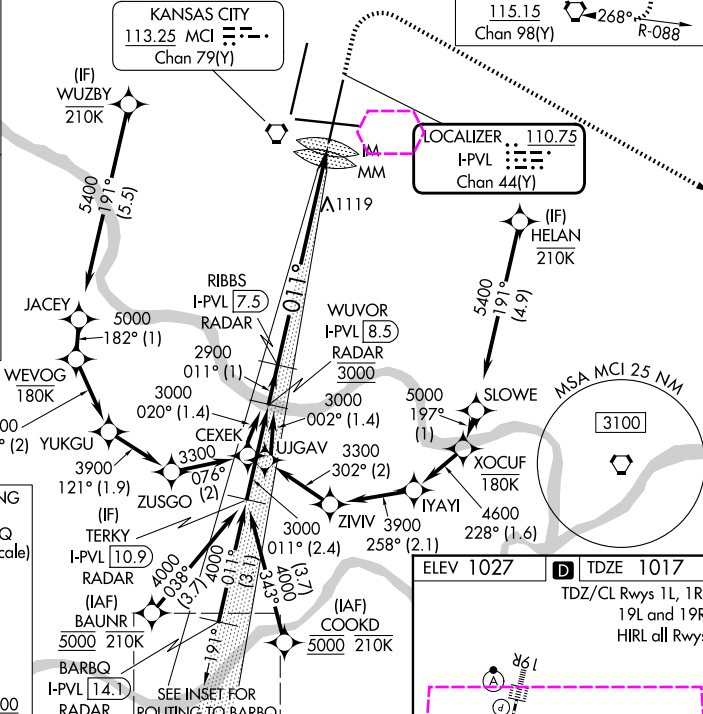
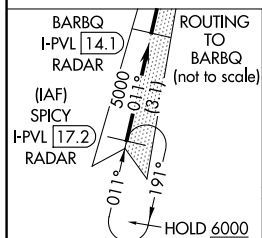


From BAUNR, COOKD, WUZBY, and HELAN transitions NA for Cat E.

KANSAS CITY
113.25 MCI
Chan 79(Y)



LOCALIZER 110.75
I-PVL
Chan 44(Y)

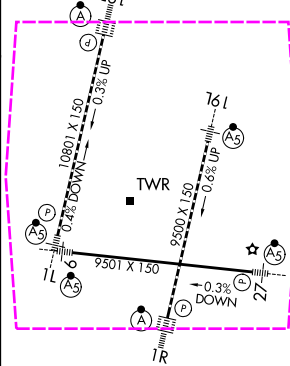


ELEV 1027

TDZE 1017

TDZ/CL Rwy 1L, 1R, 19L and 19R

HIRL all Rwy



CATEGORY	A	B	C	D	E
S-ILS 1R					
RA 161/14 150 DA 1167					
SA CATEGORY I ILS - SPECIAL AIRCREW & AIRCRAFT CERTIFICATION REQUIRED					

KANSAS CITY, MISSOURI

Amdt 7A 30NOV23

39°18'N-94°43'W

KANSAS CITY INTL (MCI)

ILS RWY 1R (SA CAT I)

NC-3, 07 AUG 2025 to 04 SEP 2025

NC-3, 07 AUG 2025 to 04 SEP 2025