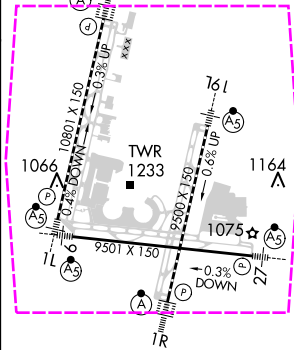
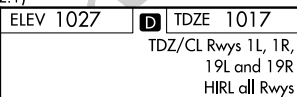
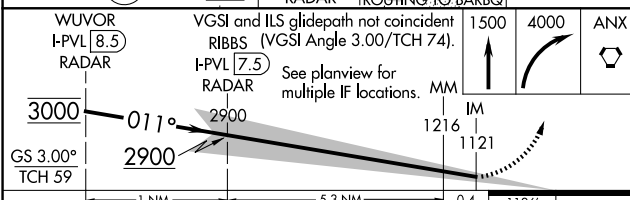
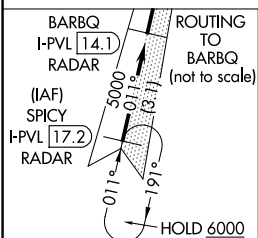
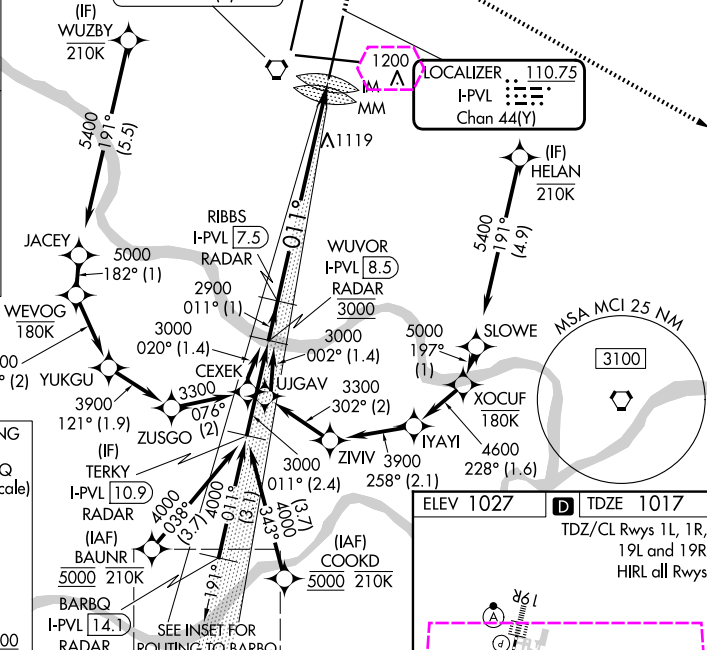
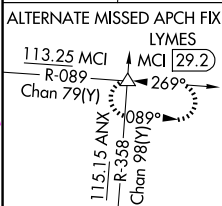
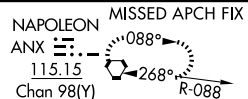
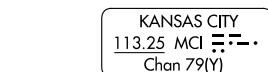


ILS RWY 1R (CAT II & III)
KANSAS CITY INTL (MCI)

T Simultaneous approach authorized except from BAUNR, COOKD, WUZBY, and HELAN. CAT II: RVR 1000 authorized with specific OPSPEC, MSPEC, or LOA approval and use of autoland or HUD to touchdown.

From BAUNR, COOKD, WUZBY, and
HELAN transitions NA for Cat E.



CATEGORY	A	B	C	D	E
S-ILS 1R	CAT II RA 111/12 100 DA 1117				
S-ILS 1R	CAT III RVR 06				

CATEGORY II & III ILS - SPECIAL AIRCREW
& AIRCRAFT CERTIFICATION REQUIRED

KANSAS CITY, MISSOURI

AL-780 (FAA)

25219

LOC/DME I-PVL 110.75 Chan 44 (Y)	APP CRS 011°	Rwy Ldg TDZE 1017 Apt Elev 1027
--	------------------------	---

ILS RWY 1R (CAT II & III)

KANSAS CITY INTL (MCI)

RNP ADCH - GPS. From BAUNR or COOKD or WUZBY or HELAN.

DME or RADAR required. RADAR required for procedure entry at SPICY.

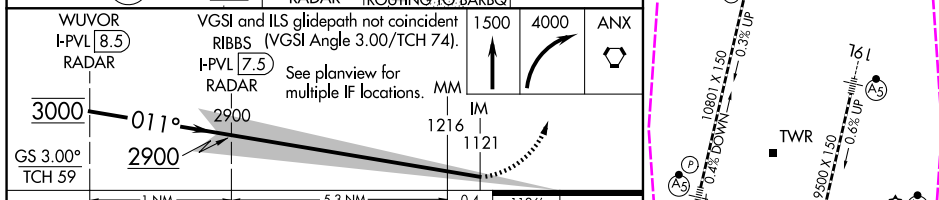
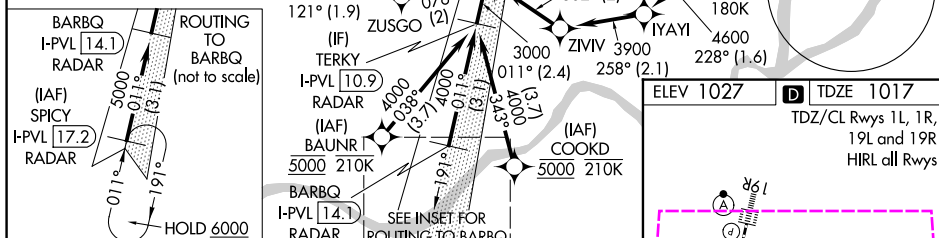
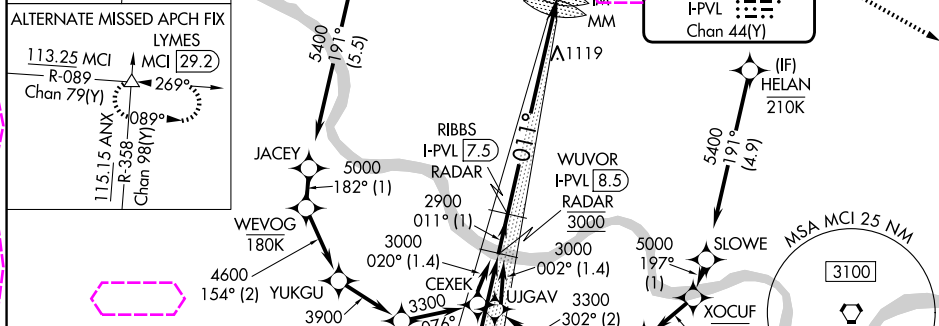
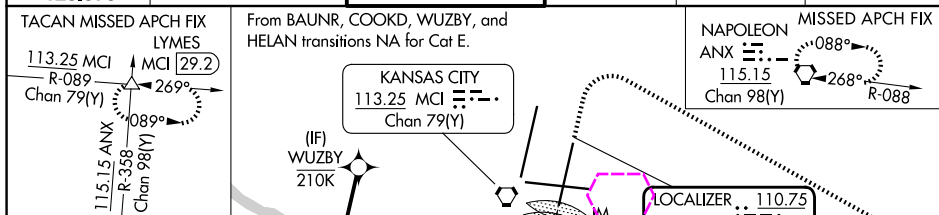
Simultaneous approach authorized except from BAUNR, COOKD, WUZBY, and HELAN. CAT II: RVR 1000 authorized with specific OPSPEC, MSPEC, or LOA approval and use of autoland or HUD to touchdown.

ALSF-2



MISSED APPROACH: Climb to 1500 then climbing right turn to 4000 direct ANX VORTAC and hold. (TACAN aircraft) Climb to 1500 then climbing right turn to 4000 on heading 130° and MCI R-089 to LYMES INT/MCI 29.2 DME and hold.

D-ATIS 128.375	KANSAS CITY APP CON 120.95 318.1	INTERNATIONAL TOWER 128.2 254.25	GND CON 121.8	CLNC DEL 135.7	CPDLC
--------------------------	--	--	-------------------------	--------------------------	-------



CATEGORY	A	B	C	D	E
S-ILS 1R	CAT II	RA 111/12	100	DA 1117	
S-ILS 1R	CAT III	RVR 06			

CATEGORY II & III ILS - SPECIAL AIRCREW & AIRCRAFT CERTIFICATION REQUIRED

KANSAS CITY, MISSOURI

Amdt 7A 30NOV23

39°18'N-94°43'W

KANSAS CITY INTL (MCI)

ILS RWY 1R (CAT II & III)