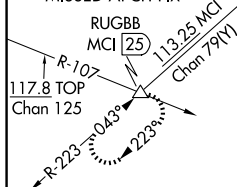


ILS RWY 19R (SA CAT I)
KANSAS CITY INTL (MCI)

MISSED APPROACH: Climb to 2000 then climbing right turn to 4000 on heading 240° and MCI VORTAC R-223 to RUGBB INT/MCI 25 DME and hold.

MISSED APCH FIX 1426 \AA

SEE INSET FOR
ROUTING TO
WESGI

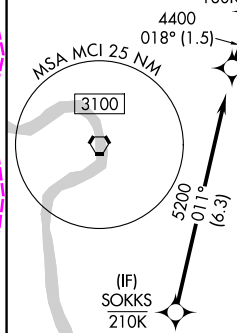
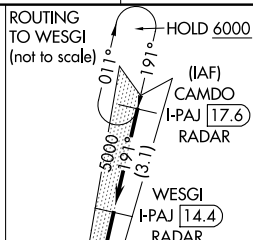
WESGI
-PAJ 14.4

ROUTING
TO WESGI
(not to scale)

170°



210°


HOLD 6000



SCIPR, HOLMS, SWETR
and SOKKS transitions
NA for Cat E.

ALTERNATE MISSED
APCH FIX

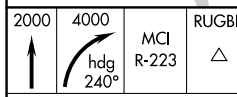
ST JOSEPH
STJ  
115.5
Chan 102

 355° 175°

KANSAS CITY
113.25 MCI $\overline{\text{---}}$
Chan 79(Y)

LOCALIZER 109.1
I-PAJ
Chan 28

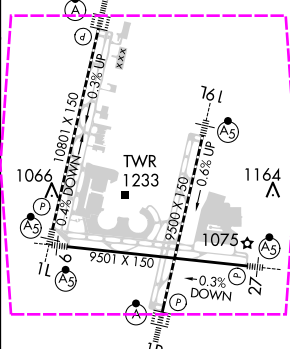
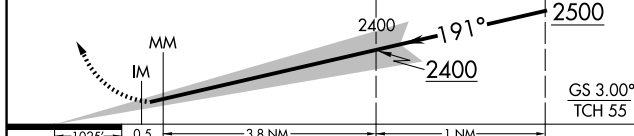
ELEV 1027	D	TDZE 991
-----------	----------	----------



VGSI and ILS glidepath not coincident
(VGSI Angle 3.00/TCH 80).

ADTG
AJ 7.3
ADAR

See planview for multiple IF locations.



CATEGORY	A	B	C	D	E
S-ILS 19R	RA 135/14 150 DA 1141				


SA CATEGORY I ILS - SPECIAL AIRCREW
& AIRCRAFT CERTIFICATION REQUIRED

HIRL all Rwys
TDZ/CL Rwys 1L, 1R, 19L and 19R

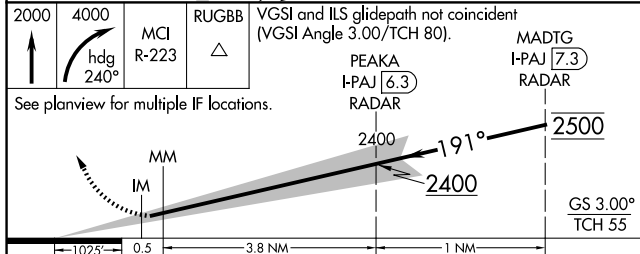
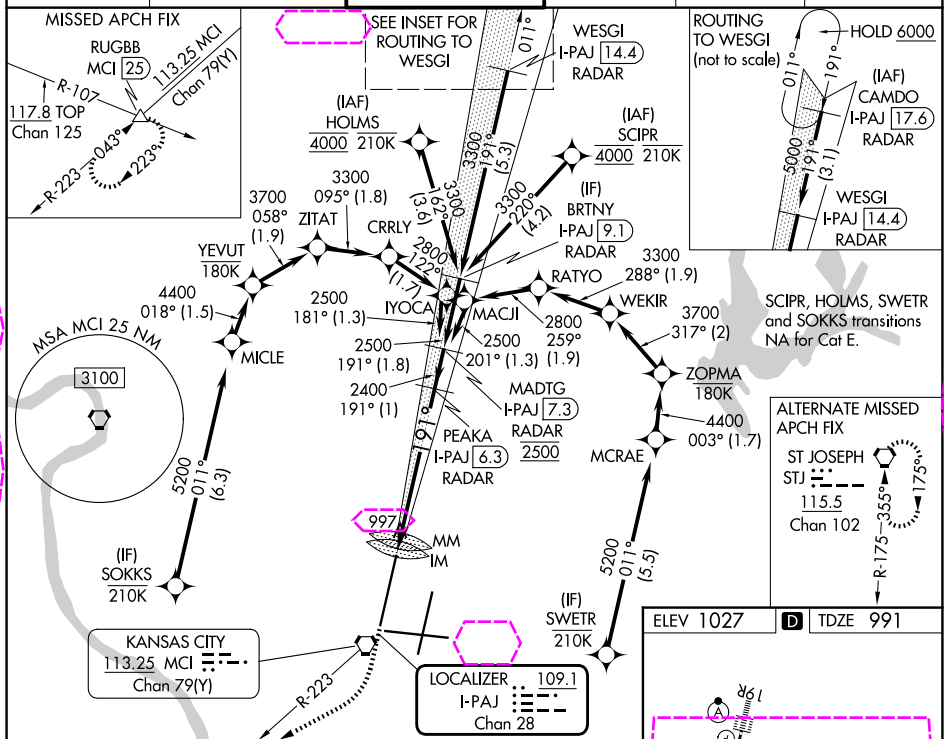
NC-3, 10 JUL 2025 to 07 AUG 2025

LOC/DME I-PAJ 109.1 Chan 28	APP CRS 191°	Rwy Ldg 10801 TDZE 991 Apt Elev 1027
--	------------------------	---

ILS RWY 19R (SA CAT I)
KANSAS CITY INTL (MCI)

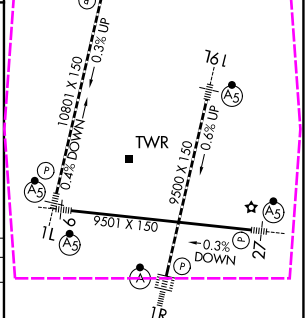
RNP APCH - GPS. From SCIPR or HOLMS or SWETR or SOKKS.	ALSF-2 	MISSED APPROACH: Climb to 2000 then climbing right turn to 4000 on heading 240° and MCI VORTAC R-223 to RUGBB INT/MCI 25 DME and hold.
DME or RADAR required. RADAR required for procedure entry at CAMDO.		
T Requires specific OPSPEC, MSPEC, or LOA approval. Simultaneous approach authorized except from SCIPR, HOLMS, SOKKS, and SWETR.		

D-ATIS 128.375	KANSAS CITY APP CON 120.95 318.1	INTERNATIONAL TOWER 128.2 254.25	GND CON 121.8	CLNC DEL 135.7	CPDLC
--------------------------	--	--	-------------------------	--------------------------	-------



CATEGORY	A	B	C	D	E
S-ILS 19R	RA 135/14 150 DA 1141				

SA CATEGORY I ILS - SPECIAL AIRCREW
& AIRCRAFT CERTIFICATION REQUIRED



HIRL all Rwy's
TDZ/CL Rwy's 1L, 1R, 19L and 19R