

KANSAS CITY, MISSOURI

AL-780 (FAA)

24081

LOC/DME I-PAJ 109.1 Chan 28	APP CRS 191°	Rwy Idg 10801 TDZE 991 Apt Elev 1027
--	------------------------	---

ILS RWY 19R (CAT II & III)

KANSAS CITY INTL (MCI)

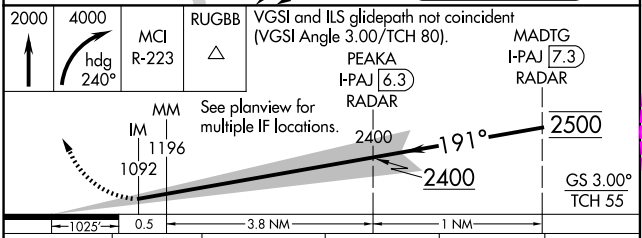
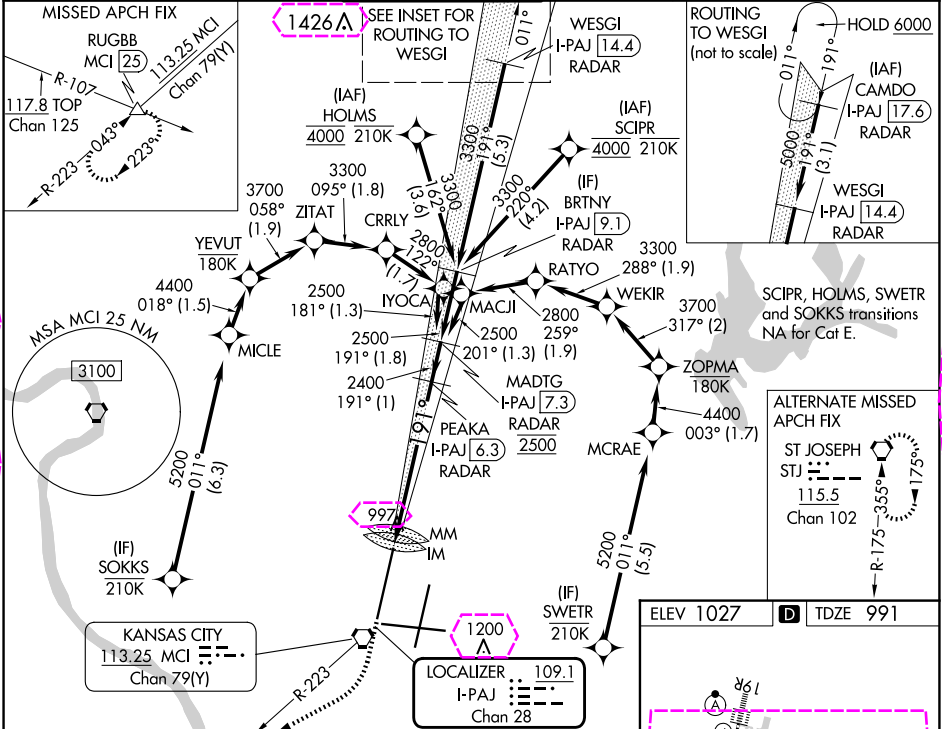
RNP APCH - GPS. From SCIPR or HOLMS or SWETR or SOKKS.
DME or RADAR required. RADAR required for procedure entry at CAMDO.
Simultaneous approach authorized except from SCIPR and HOLMS, SOKKS, and SWETR. CAT II: RVR 1000 authorized with specific OPSPEC, MSPEC, or LOA approval and use of autoland or HUD to touchdown.

ALSF-2



MISSSED APPROACH: Climb to 2000 then climbing right turn to 4000 on heading 240° and on MCI VORTAC R-223 to RUGBB INT/MCI 25 DME and hold.

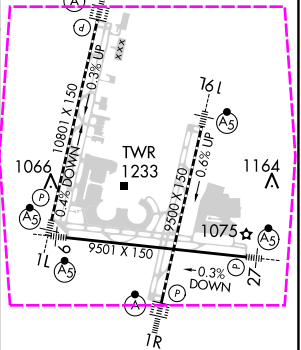
D-ATIS 128.375	KANSAS CITY APP CON 120.95 318.1	INTERNATIONAL TOWER 128.2 254.25	GND CON 121.8	CLNC DEL 135.7	CPDLC
--------------------------	--	--	-------------------------	--------------------------	-------



CATEGORY	A	B	C	D	E
S-ILS 19R	CAT II RA 105/12 100 DA 1091				
S-ILS 19R	CAT III RVR 07				

CATEGORY II & III ILS - SPECIAL AIRCREW & AIRCRAFT CERTIFICATION REQUIRED

ELEV 1027 D TDZE 991



HIRL all Rwy's
TDZ/CL Rwy's 1L, 1R, 19L and 19R

KANSAS CITY, MISSOURI

Amdt 15A 30NOV23

39°18'N-94°43'W

KANSAS CITY INTL (MCI)

ILS RWY 19R (CAT II & III)

NC-3, 10 JUL 2025 to 07 AUG 2025

NC-3, 10 JUL 2025 to 07 AUG 2025

ILS RWY 19R (CAT II & III)
KANSAS CITY INTL (MCI)

MISSED APPROACH: Climb to 2000 then climbing right turn to 4000 on heading 240° and on MCI VORTAC R-223 to RUGBB INT/MCI 25 DME and hold.

CPDLC

ILS RWY 19R (CAT II & III)