

ITHACA, NEW YORK

AL-779 (FAA)

24249

WAAS CH 50415 W14A	APP CRS 144°	Rwy Idg 6602 TDZE 1083 Apt Elev 1099
--	------------------------	---

RNAV (GPS) Z RWY 14

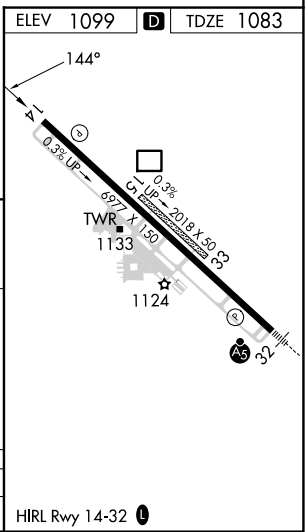
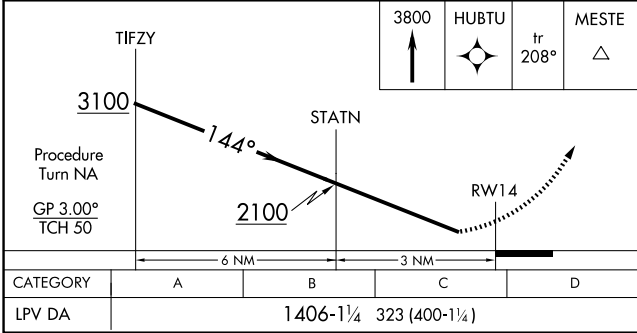
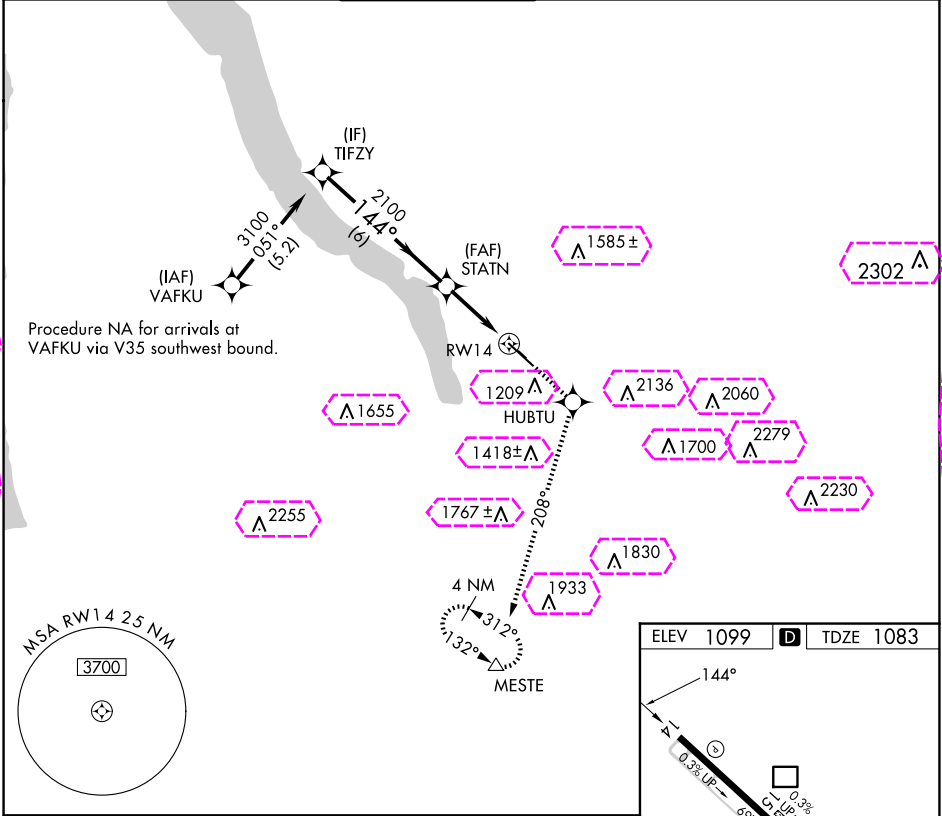
ITHACA TOMPKINS INTL (ITH)

⚠ **19°C**

DME/DME RNP-0.3 NA. Visibility reduction by helicopters NA. When local altimeter setting not received, use Elmira altimeter setting and increase DA 84 feet and LPV all Cats visibility ¼ mile.

MISSED APPROACH: Climb to 3800 direct HUBTU and via track 208° to MESTE and hold.

ATIS 125.175	ELMIRA APP CON ★ 124.3 257.8	ITHACA TOWER ★ 119.6 (CTAF) 0	GND CON 121.8	CLNC DEL 121.8	UNICOM 122.95
------------------------	--	---	-------------------------	--------------------------	-------------------------



ITHACA, NEW YORK

AL-779 (FAA)

25219

WAAS CH 50415 W14A	APP CRS 144°	Rwy Ldg 6602 TDZE 1083 Apt Elev 1099
--	------------------------	---

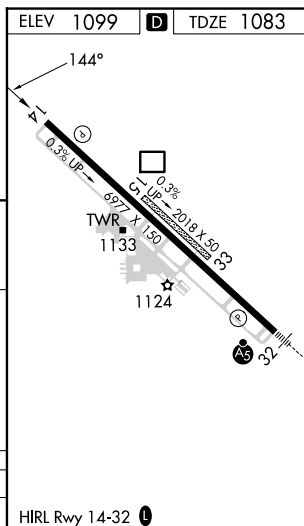
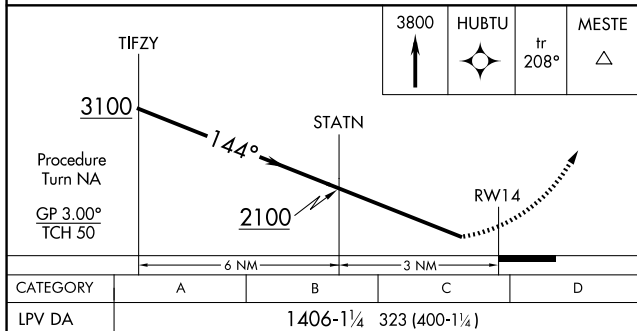
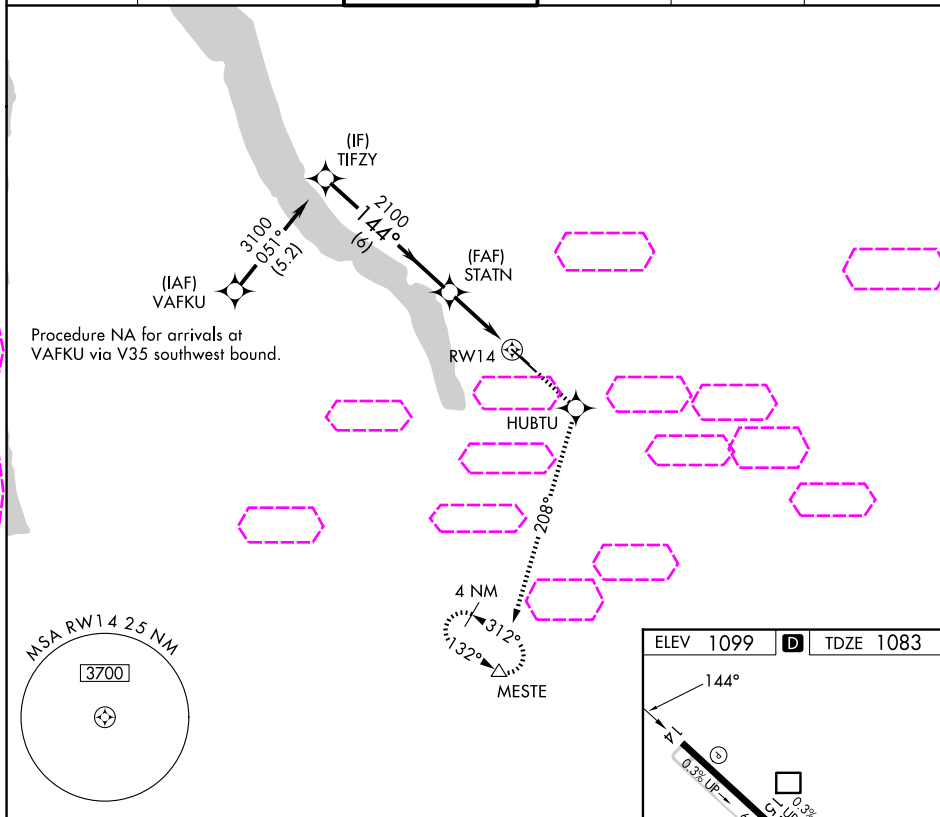
RNAV (GPS) Z RWY 14

ITHACA TOMPKINS INTL (ITH)

T DME/DME RNP-0.3 NA. Visibility reduction by helicopters NA. When local altimeter setting not received, use Elmira altimeter setting and increase DA 84 feet and LPV all Cats visibility ¼ mile.

MISSED APPROACH: Climb to 3800 direct HUBTU and via track 208° to MESTE and hold.

ATIS 125.175	ELMIRA APP CON ★ 124.3 257.8	ITHACA TOWER ★ 119.6 (CTAF) 0	GND CON 121.8	CLNC DEL 121.8	UNICOM 122.95
------------------------	--	---	-------------------------	--------------------------	-------------------------



ITHACA, NEW YORK

Orig-A 29JUL10

42°29'N - 76°28'W

ITHACA TOMPKINS INTL (ITH)

RNAV (GPS) Z RWY 14