

ITHACA, NEW YORK

AL-779 (FAA)

24249

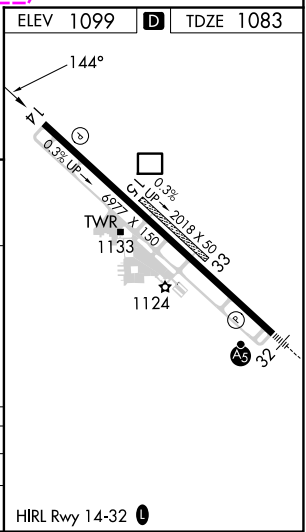
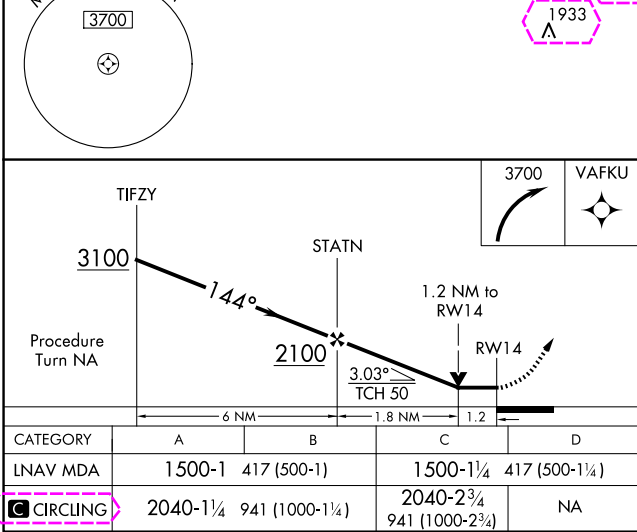
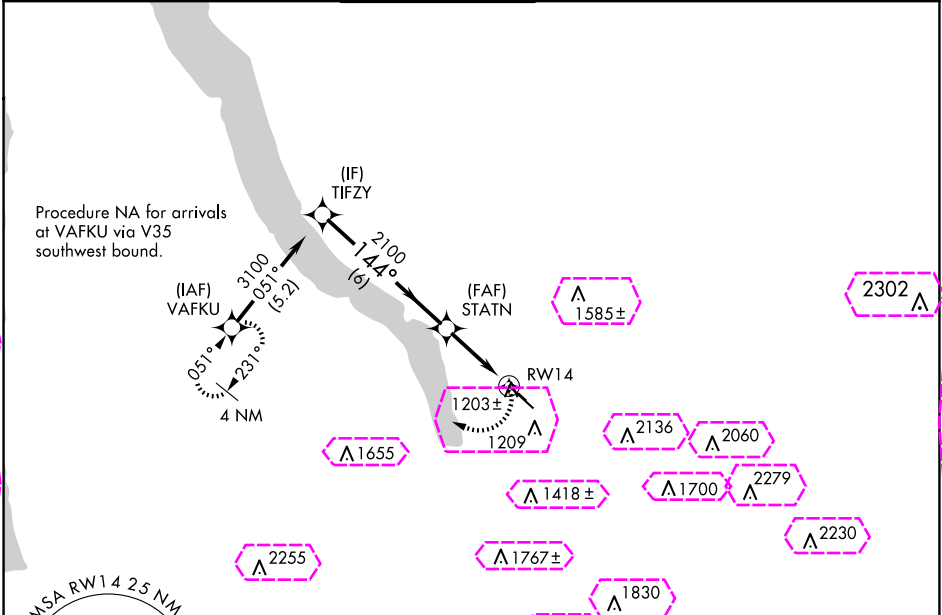
APP CRS	Rwy Idg	6602
144°	TDZE	1083
	Apt Elev	1099

# RNAV (GPS) Y RWY 14

ITHACA TOMPKINS INTL (ITH)

<div><div>T</div><div>A</div><div>*</div><div>-19°C</div></div>	DME/DME RNP-0.3 NA. Helicopter visibility reduction below ¾ SM NA. Circling NA to Rwys 15 and 33.	MISSED APPROACH: Climbing right turn to 3700 direct VAFKU and hold.
---	---	---

ATIS 125.175	ELMIRA APP CON ★ 124.3 257.8	ITHACA TOWER ★ 119.6 (CTAF) 0	GND CON 121.8	CLNC DEL 121.8	UNICOM 122.95
-----------------	---------------------------------	----------------------------------	------------------	-------------------	------------------



ITHACA, NEW YORK

AL-779 (FAA)

25219

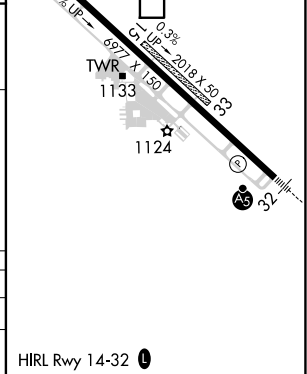
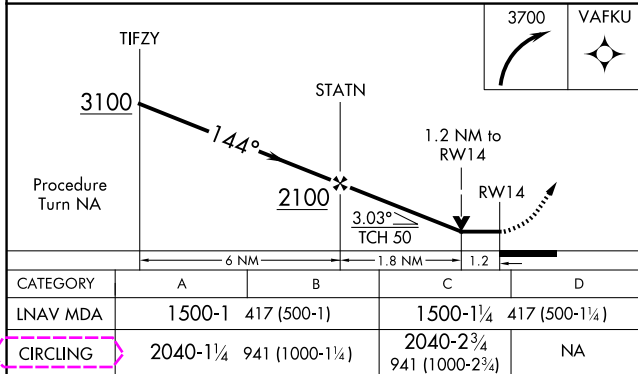
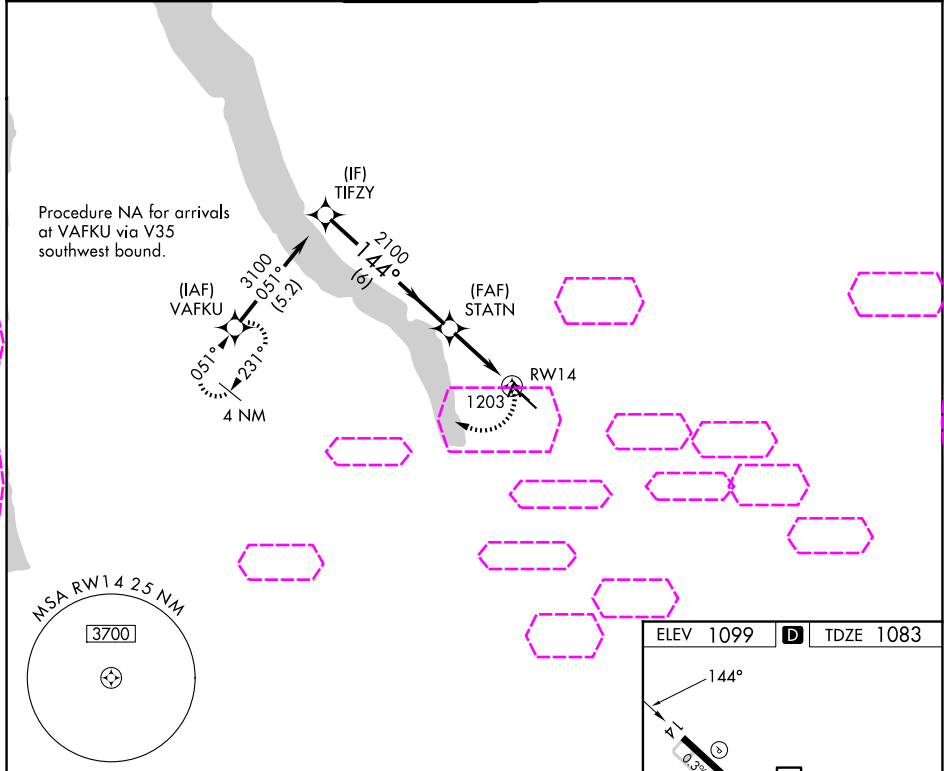
APP CRS	Rwy Ldg	6602
144°	TDZE	1083
	Apt Elev	1099

# RNAV (GPS) Y RWY 14

ITHACA TOMPKINS INTL (ITH)

<div><div><div>T</div><div>A</div><div>*</div></div><div>-18°C</div></div> <div>DME/DME RNP-0.3 NA. Helicopter visibility reduction below ¾ SM NA. Circling NA to Rwy 15 and 33.</div>	MISSED APPROACH: Climbing right turn to 3700 direct VAFKU and hold.
--	---

ATIS 125.175	ELMIRA APP CON ★ 124.3 257.8	ITHACA TOWER ★ 119.6 (CTAF) 0	GND CON 121.8	CLNC DEL 121.8	UNICOM 122.95
-----------------	---------------------------------	----------------------------------	------------------	-------------------	------------------



ITHACA, NEW YORK  
Orig-B 30JAN20

42°29'N-76°28'W

ITHACA TOMPKINS INTL (ITH)  
RNAV (GPS) Y RWY 14

NE-2, 07 AUG 2025 to 04 SEP 2025

NE-2, 07 AUG 2025 to 04 SEP 2025