

ITHACA, NEW YORK

AL-779 (FAA)

25051

WAAS CH 62815 W32A	APP CRS 325°	Rwy Idg 6602 TDZE 1099 Apt Elev 1099
--	------------------------	--

RNAV (GPS) RWY 32

ITHACA TOMPKINS INTL (ITH)

RNP APCH - GPS.

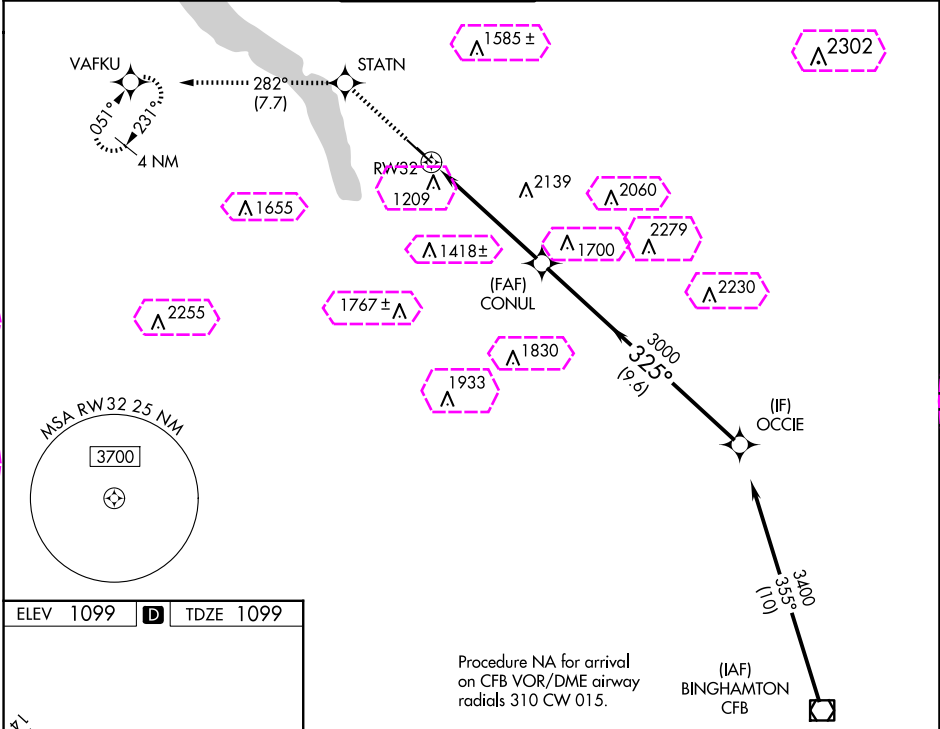
V Rwy 32 helicopter visibility reduction below $\frac{3}{4}$ SM NA. Circling NA to Rws 15 and 33. Inop table does not apply to LNAV Cat A/C/D. For inop ALS, increase LPV all Cats visibility to RVR 4500.

A **<19°C**

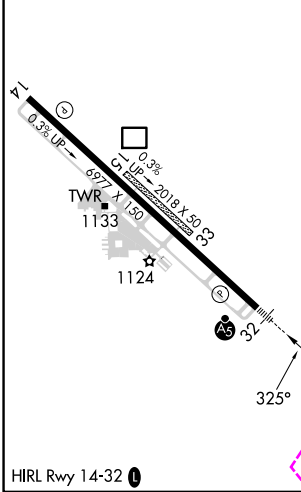
MALSR

MISSED APPROACH: Climb to 3700 direct STATN and on track 282° to VAFKU and hold.

ATIS 125.175	ELMIRA APP CON ★ 124.3 257.8	ITHACA TOWER ★ 119.6 (CTAF) 0	GND CON 121.8	CLNC DEL 121.8	UNICOM 122.95
------------------------	--	---	-------------------------	--------------------------	-------------------------



ELEV 1099	D	TDZE 1099
-----------	----------	-----------



3700	STATN	tr 282°	VAFKU	OCCIE
CATEGORY	A	B	C	D
LPV DA	1385/24		286 (300-½)	
LNAV MDA	2300/40 1201 (1300-¾)	2300/55 1201 (1300-1)	2300-3	1201 (1300-3)
CIRCLING	2300-1¼ 1201 (1300-1¼)	2300-1½ 1201 (1300-1½)	2300-3 1201 (1300-3)	2440-3 1341 (1400-3)

ITHACA, NEW YORK
Orig-D 20FEB25

42°29'N-76°28'W

ITHACA TOMPKINS INTL (ITH) RNAV (GPS) RWY 32

NE-2, 10 JUL 2025 to 07 AUG 2025

NE-2, 10 JUL 2025 to 07 AUG 2025

ITHACA, NEW YORK

AL-779 (FAA)

25219

WAAS CH 62815 W32A	APP CRS 325°	Rwy Ldg TDZE 1099 Apt Elev 1099
--	------------------------	---

RNAV (GPS) RWY 32
ITHACA TOMPKINS INTL (ITH)

RNP APCH - GPS.

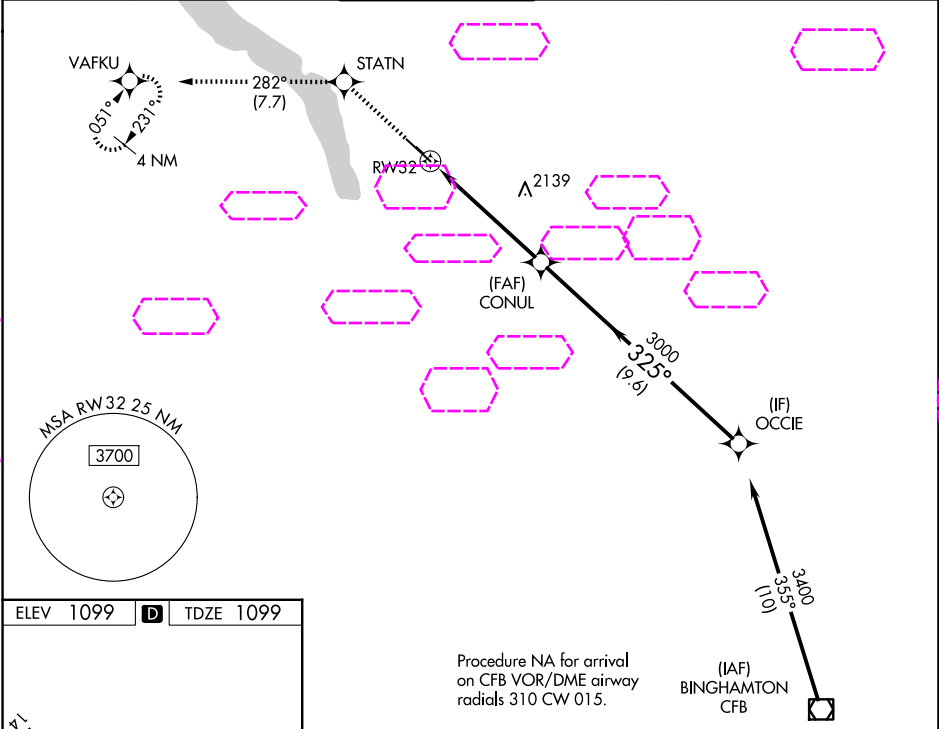
⚠ Rwy 32 helicopter visibility reduction below $\frac{3}{4}$ SM NA. Circling NA to Rws 15 and 33. Inop table does not apply to LNAV Cat A/C/D. For inop ALS, increase LPV all Cats visibility to RVR 4500.

MAISR

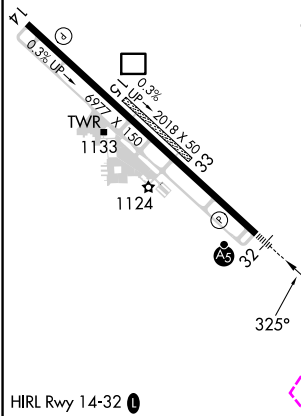


MISSED APPROACH: Climb to 3700 direct STATN and on track 282° to VAFKU and hold.

ATIS 125.175	ELMIRA APP CON ★ 124.3 257.8	ITHACA TOWER ★ 119.6 (CTAF) 0	GND CON 121.8	CLNC DEL 121.8	UNICOM 122.95
------------------------	--	---	-------------------------	--------------------------	-------------------------



ELEV 1099	D	TDZE 1099
-----------	----------	-----------



3700 ↑	STATN ✧	tr 282° ✧	VAFKU		
CATEGORY		A	B	C	D
LPV	DA	1385/24		286 (300-½)	
LNAV	MDA	2300/40 1201 (1300-¾)	2300/55 1201 (1300-1)	2300-3	1201 (1300-3)
CIRCLING		2300-1¼ 1201 (1300-1¼)	2300-1½ 1201 (1300-1½)	2300-3 1201 (1300-3)	2440-3 1341 (1400-3)

ITHACA, NEW YORK
Orig-D 20FEB25

42°29'N-76°28'W

ITHACA TOMPKINS INTL (ITH)
RNAV (GPS) RWY 32

NE-2, 07 AUG 2025 to 04 SEP 2025

NE-2, 07 AUG 2025 to 04 SEP 2025