

ITHACA TOMPKINS INTL (ITH)
ILS or LOC RWY 32

NE-2, 10 JUL 2025 to 07 AUG 2025

ITHACA, NEW YORK

AL-779 (FAA)

25219

LOC I-ITH	APP CRS	Rwy Ldg	6602
108.7	325°	TDZE	1099
		Apt Elev	1099

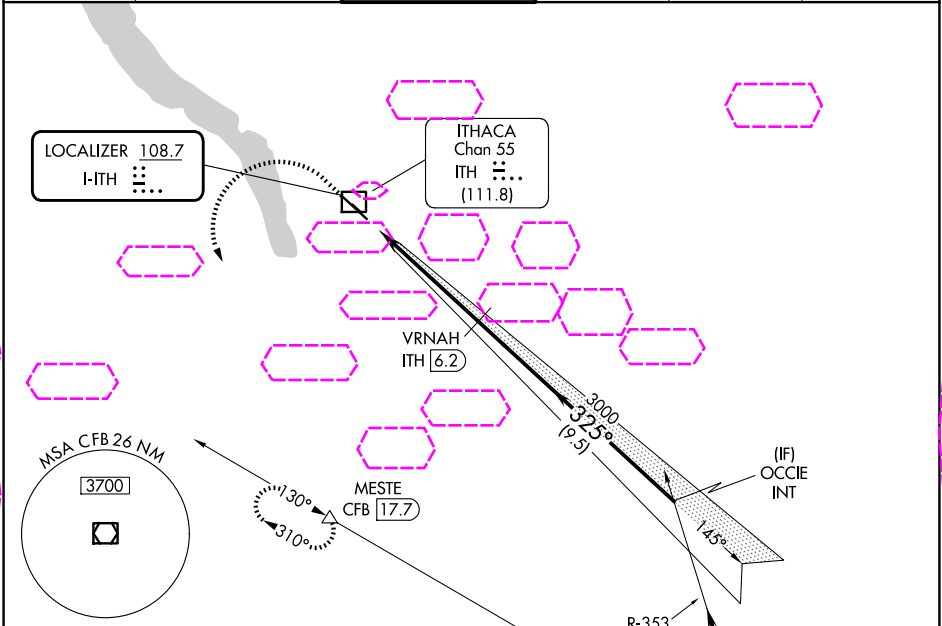
ILS or LOC RWY 32
ITHACA TOMPKINS INTL (ITH)

DME required.

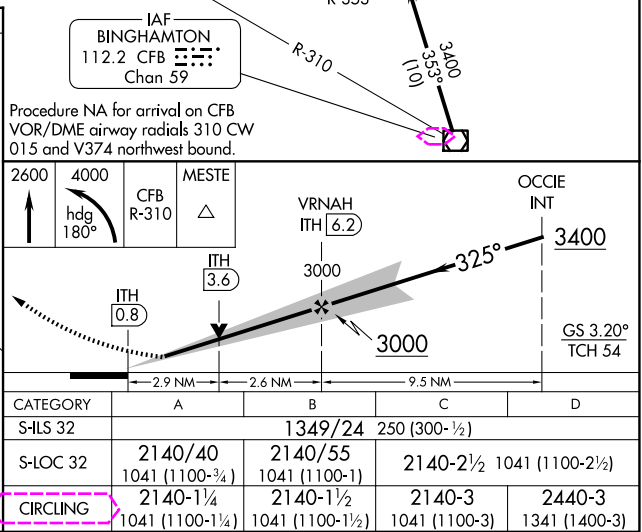
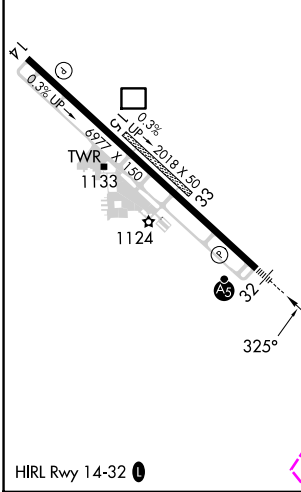
V Circling NA to Rwy 15 and 33. DME from ITH DME.
A DME use requires simultaneous reception of I-ITH and ITH DME.
18°C

MALSR
A5 MISSED APPROACH: Climb to 2600 then climbing left turn to 4000 on heading 180° and CFB VOR/DME R-310 to MESTE/CFB VOR/DME 17.7 DME and hold.

ATIS	ELMIRA APP CON ★	ITHACA TOWER ★	GND CON	CLNC DEL	UNICOM
125.175	124.3 257.8	119.6 (CTAF) 0	121.8	121.8	122.95



ELEV 1099	D	TDZE 1099
-----------	---	-----------



ITHACA, NEW YORK
Amdt 8A 20FEB25

42°29'N-76°28'W

ITHACA TOMPKINS INTL (ITH)
ILS or LOC RWY 32

NE-2, 07 AUG 2025 to 04 SEP 2025

NE-2, 07 AUG 2025 to 04 SEP 2025