

BURNS FLAT, OKLAHOMA

AL-778 (FAA)

25163

VORTAC BFV	APP CRS	Rwy Ldg	13503
110.0	358°	TDZE	1913
Chan 37		Apt Elev	1922

VOR RWY 35L

CLINTON/SHERMAN (CSM)

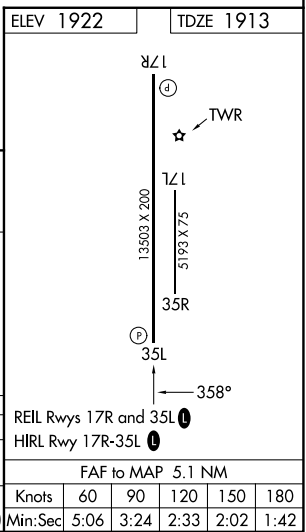
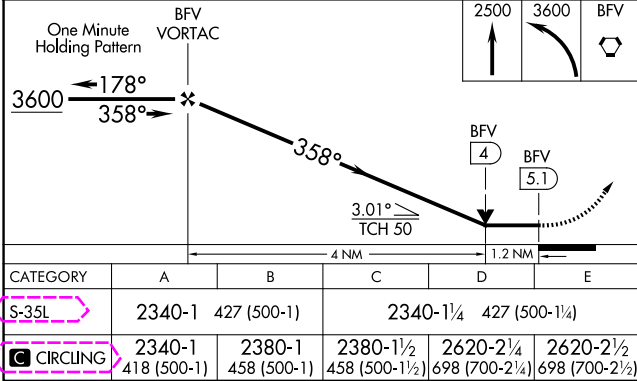
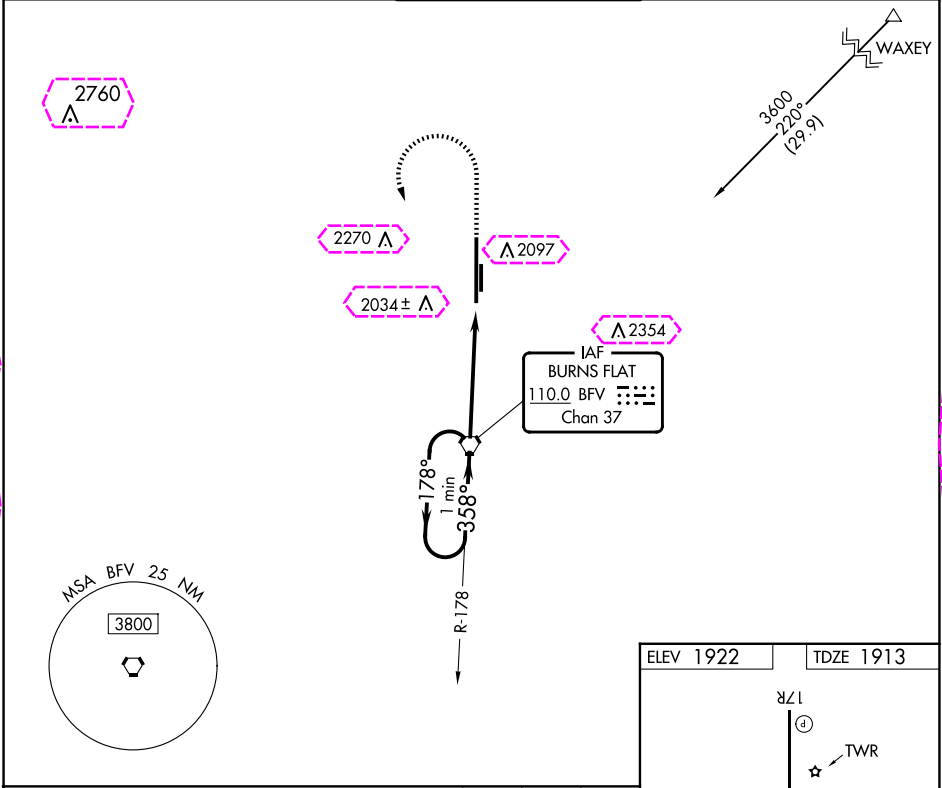
▼

▲

Circling NA east of runway 17R-35L.

MISSED APPROACH: Climb to 2500 then climbing left turn to 3600 direct BFV VORTAC and hold.

ASOS	FORT WORTH CENTER	CLINTON/SHERMAN TOWER★	GND CON	UNICOM
118.45	128.4 269.37	119.6 (CTAF) 0 256.9	121.7 239.0	122.95



BURNS FLAT, OKLAHOMA
Amdt 12A 17AUG17

35°20'N-99°12'W

CLINTON/SHERMAN (CSM)
VOR RWY 35L

SC-1, 10 JUL 2025 to 07 AUG 2025

SC-1, 10 JUL 2025 to 07 AUG 2025

SC-1, 07 AUG 2025 to 04 SEP 2025