

BURNS FLAT, OKLAHOMA

AL-778 (FAA)

25163

WAAS CH <b>40217</b> <b>W35A</b>	APP CRS <b>355°</b>	Rwy Ldg TDZE <b>1913</b> Apt Elev <b>1922</b>
--	------------------------	---

RNAV (GPS) RWY 35L

CLINTON/SHERMAN (CSM)

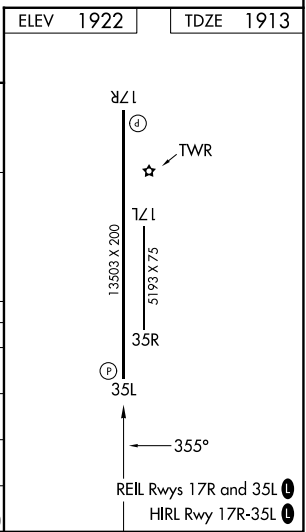
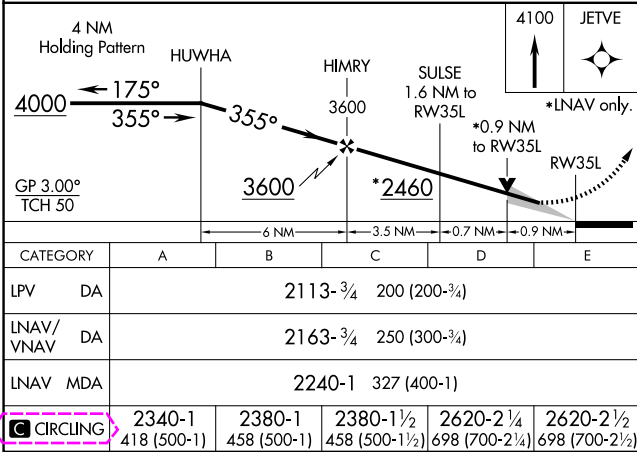
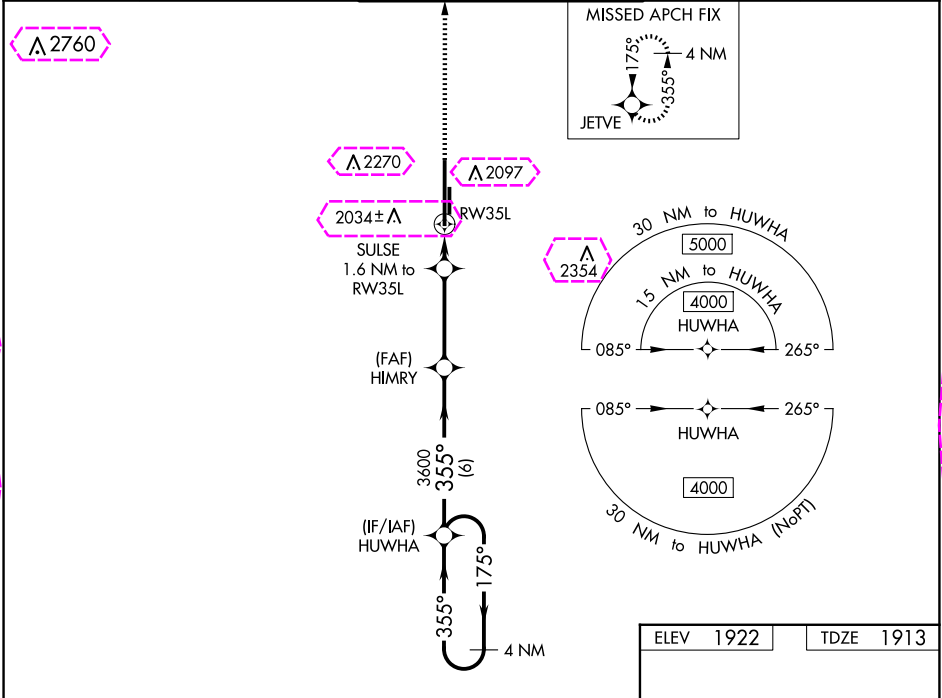
T

A

For uncompensated Baro-VNAV systems, LNAV/VNAV NA below -12°C (11°F) or above 54°C (130°F). Circling NA east of Rwy 17R-35L. DME/DME RNP-0.3 NA.

MISSED APPROACH: Climb to 4100 direct JETVE and hold.

ASOS <b>118.45</b>	FORT WORTH CENTER <b>128.4 269.37</b>	CLINTON/SHERMAN TOWER* <b>119.6 (CTAF) 256.9</b>	GND CON <b>121.7 239.0</b>	UNICOM <b>122.95</b>
-----------------------	--	---	-------------------------------	-------------------------



SC-1, 10 JUL 2025 to 07 AUG 2025

SC-1, 10 JUL 2025 to 07 AUG 2025

BURNS FLAT, OKLAHOMA  
Amdt 1A 17AUG17

35°20'N-99°12'W

CLINTON/SHERMAN (CSM)

RNAV (GPS) RWY 35L

BURNS FLAT, OKLAHOMA

AL-778 (FAA)

25219

WAAS CH <b>40217</b> <b>W35A</b>	APP CRS <b>355°</b>	Rwy Ldg TDZE <b>1913</b> Apt Elev <b>1922</b>
--	------------------------	---

RNAV (GPS) RWY 35L

CLINTON/SHERMAN (CSM)

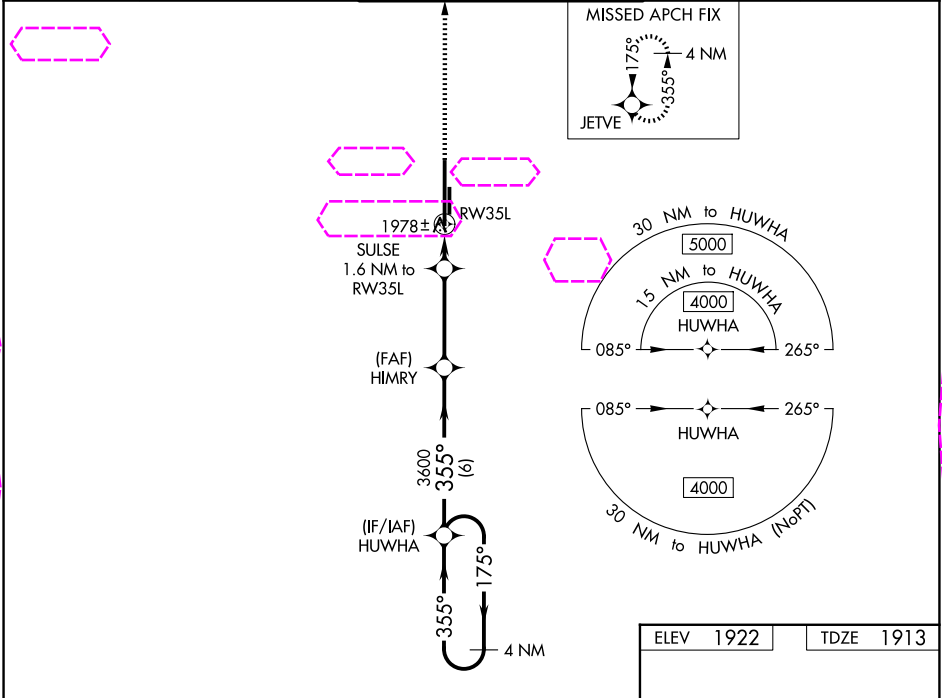
T

A

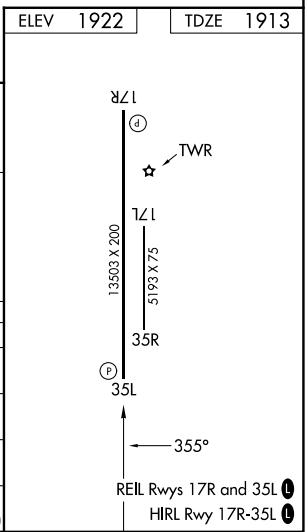
For uncompensated Baro-VNAV systems, LNAV/VNAV NA below -12°C (11°F) or above 54°C (130°F). Circling NA east of Rwy 17R-35L. DME/DME RNP-0.3 NA.

MISSED APPROACH: Climb to 4100 direct JETVE and hold.

ASOS <b>118.45</b>	FORT WORTH CENTER <b>128.4 269.37</b>	CLINTON/SHERMAN TOWER* <b>119.6 (CTAF) 256.9</b>	GND CON <b>121.7 239.0</b>	UNICOM <b>122.95</b>
-----------------------	--	---	-------------------------------	-------------------------



<div>4 NM Holding Pattern</div> <div>HUWHA</div> <div>HIMRY</div> <div>SULSE 1.6 NM to RW35L</div> <div>4100</div> <div>JETVE</div>					
<div>4000</div> <div>← 175°</div> <div>355° →</div> <div>355°</div> <div>3600</div> <div>*2460</div> <div>*0.9 NM to RW35L</div> <div>RW35L</div> <div>*LNAV only.</div>					
<div>GP 3.00°</div> <div>TCH 50</div> <div>6 NM</div> <div>3.5 NM</div> <div>0.7 NM</div> <div>0.9 NM</div>					
CATEGORY	A	B	C	D	E
LPV DA	2113-¾ 200 (200-¾)				
LNAV/VNAV DA	2163-¾ 250 (300-¾)				
LNAV MDA	2240-1 327 (400-1)				
CIRCLING	2340-1 418 (500-1)	2380-1 458 (500-1)	2380-1½ 458 (500-1½)	2620-2¼ 698 (700-2¼)	2620-2½ 698 (700-2½)



BURNS FLAT, OKLAHOMA  
Amdt 1A 17AUG17

35°20'N-99°12'W

CLINTON/SHERMAN (CSM)

RNAV (GPS) RWY 35L