

BURNS FLAT, OKLAHOMA

AL-778 (FAA)

25163

WAAS CH <b>86717</b> <b>W17A</b>	APP CRS <b>175°</b>	Rwy Ldg <b>13503</b> TDZE <b>1922</b> Apt Elev <b>1922</b>
--	------------------------	--

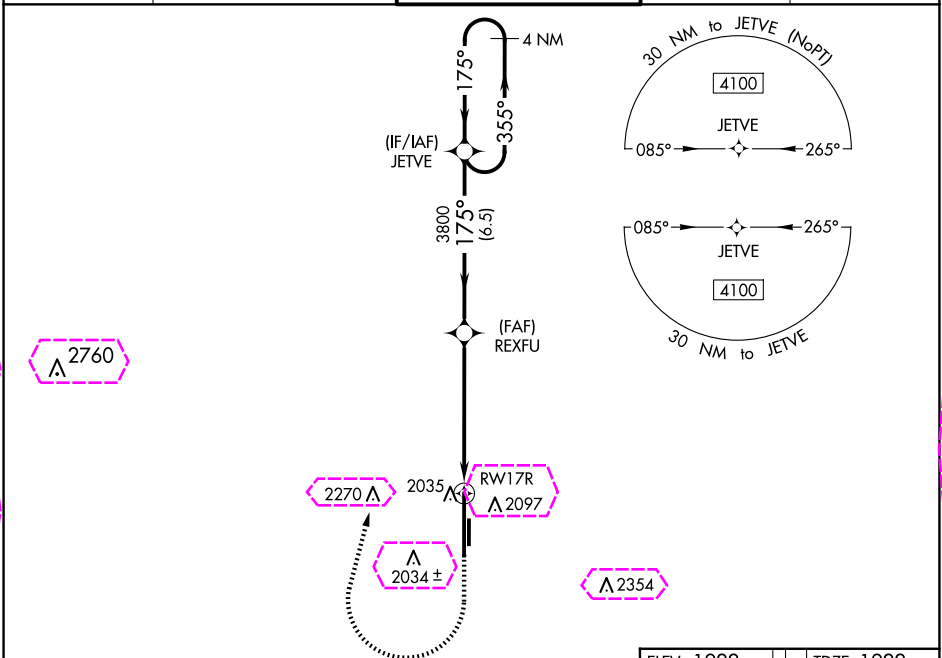
# RNAV (GPS) RWY 17R

CLINTON/SHERMAN (CSM)

▼ For uncompensated Baro-VNAV systems, LNAV/VNAV NA below -12°C (11°F) or above 54°C (130°F). Circling NA east of Rwy 17R-35L. DME/DME RNP-0.3 NA.

MISSED APPROACH: Climb to 2500 then climbing right turn to 4100 direct JETVE and hold.

ASOS <b>118.45</b>	FORT WORTH CENTER <b>128.4 269.37</b>	CLINTON/SHERMAN TOWER★ <b>119.6 (CTAF) 0 256.9</b>	GND CON <b>121.7 239.0</b>	UNICOM <b>122.95</b>
-----------------------	--	---	-------------------------------	-------------------------



2500 4100 JETVE		ELEV 1922		TDZE 1922	
*LNAV only.		JETVE		4 NM Holding Pattern	
RWY 17R		REXFU		JETVE	
1 NM		4.7 NM		6.5 NM	
CATEGORY		A		B	
LPV DA		2122-3/4		200 (200-3/4)	
LNAV/VNAV DA		2234-1		312 (400-1)	
LNAV MDA		2300-1		378 (400-1)	
C CIRCLING		2340-1 418 (500-1)	2380-1 458 (500-1)	2380-1 1/2 458 (500-1 1/2)	2620-2 1/4 698 (700-2 1/4)
					2620-2 1/2 698 (700-2 1/2)
		REIL Rwy 17R and 35L		HIRL Rwy 17R-35L	

BURNS FLAT, OKLAHOMA

Amdt 1A 17AUG17

35°20'N-99°12'W

CLINTON/SHERMAN (CSM)

# RNAV (GPS) RWY 17R

BURNS FLAT, OKLAHOMA

AL-778 (FAA)

25219

WAAS CH <b>86717</b> <b>W17A</b>	APP CRS <b>175°</b>	Rwy Ldg <b>13503</b> TDZE <b>1922</b> Apt Elev <b>1922</b>
--	------------------------	--

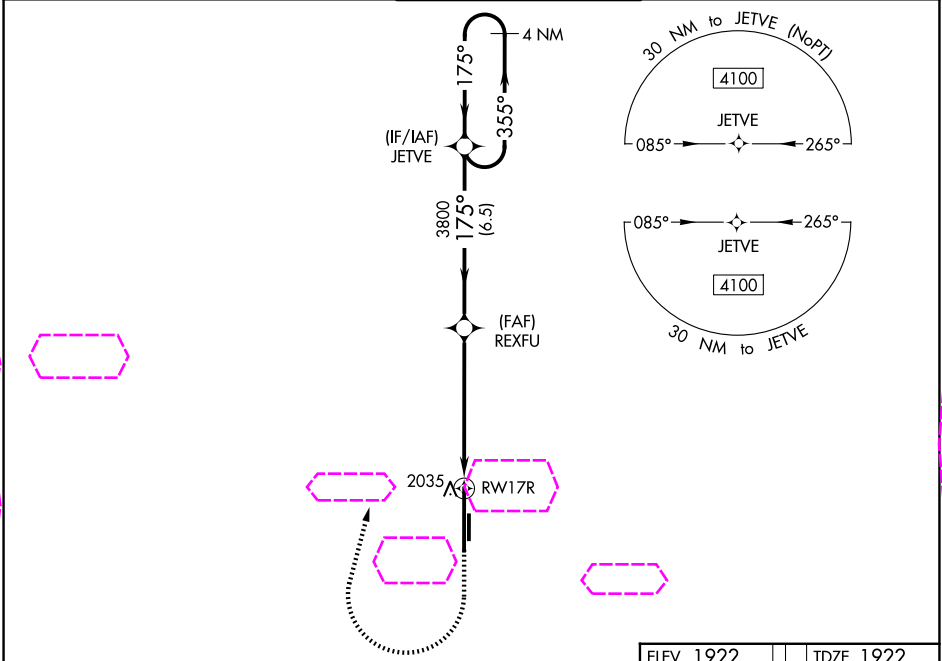
RNAV (GPS) RWY 17R

CLINTON/SHERMAN (CSM)

▼ For uncompensated Baro-VNAV systems, LNAV/VNAV NA below -12°C (11°F)  
▲ or above 54°C (130°F). Circling NA east of Rwy 17R-35L. DME/DME RNP-0.3 NA.

MISSED APPROACH: Climb to 2500 then climbing right turn to 4100 direct JETVE and hold.

ASOS <b>118.45</b>	FORT WORTH CENTER <b>128.4 269.37</b>	CLINTON/SHERMAN TOWER★ <b>119.6 (CTAF) 0 256.9</b>	GND CON <b>121.7 239.0</b>	UNICOM <b>122.95</b>
-----------------------	--	---	-------------------------------	-------------------------



2500

4100

JETVE

↑

↗

✦

\*LNAV only.

RW17R

1 NM

4.7 NM

6.5 NM

3800

175°

355°

175°

4100

GP 3.00°

TCH 54

REXFU

3800

JETVE

1 NM

4.7 NM

6.5 NM

3800

175°

355°

175°

4100

GP 3.00°

TCH 54

REXFU

3800

JETVE

CATEGORY	A	B	C	D	E
LPV DA	2122-¾ 200 (200-¾)				
LNAV/VNAV DA	2234-1 312 (400-1)				
LNAV MDA	2300-1 378 (400-1)				
CIRCLING	2340-1 418 (500-1)	2380-1 458 (500-1)	2380-1½ 458 (500-1½)	2620-2¼ 698 (700-2¼)	2620-2½ 698 (700-2½)

REIL Rwy 17R and 35L

HIRL Rwy 17R-35L

175°

175°

35L

35R

13503 X 200

5193 X 75

✦

TWR

175°

175°

BURNS FLAT, OKLAHOMA  
Amdt 1A 17AUG17

35°20'N-99°12'W

CLINTON/SHERMAN (CSM)

RNAV (GPS) RWY 17R