

BURNS FLAT, OKLAHOMA

AL-778 (FAA)

25163

LOC I-BZF 109.5	APP CRS 175°	Rwy Ldg TDZE 1922 Apt Elev 1922
---------------------------	------------------------	---

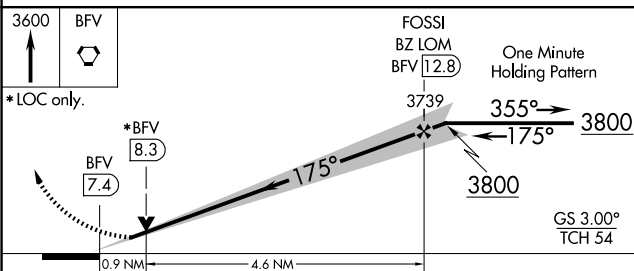
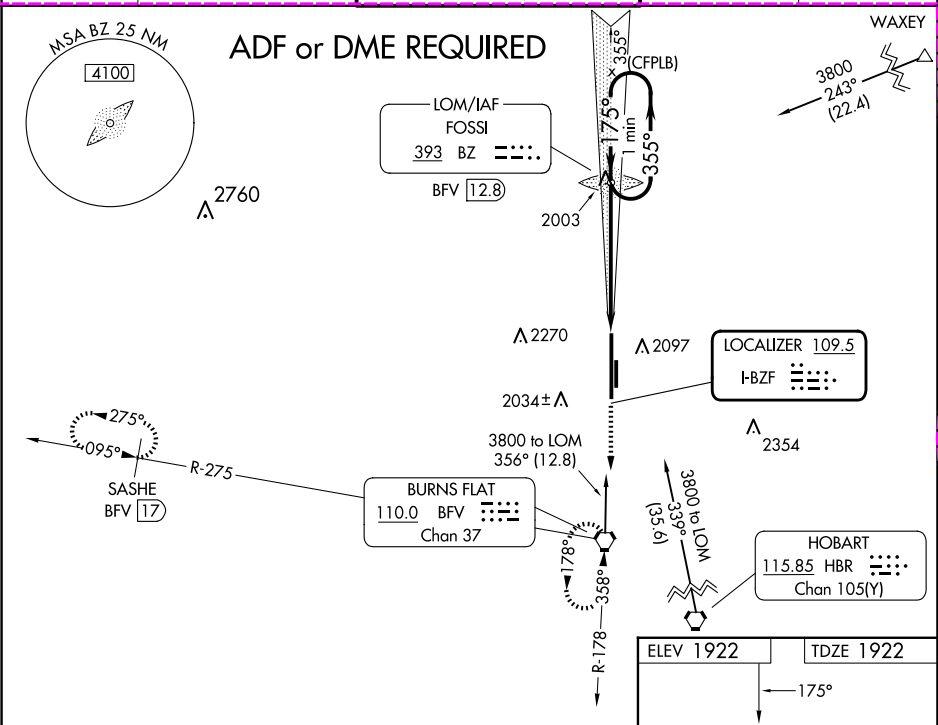
ILS or LOC RWY 17R

CLINTON/SHERMAN (CSM)

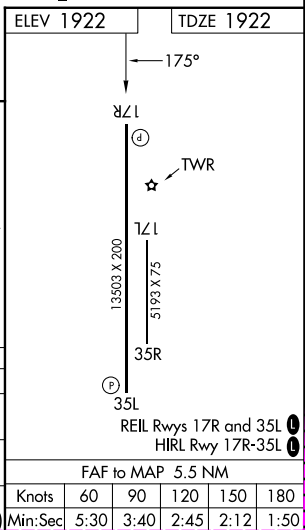
⚠ Circling NA east of Rwy 17R-35L.

MISSED APPROACH: Climb to 3600 direct BFV VORTAC and hold (TACAN aircraft climb to 3000 then climbing right turn to 5000 on heading 220° and on BFV VORTAC R-275 to SASHE/BFV 17 DME and hold west, left turn, 095° inbound.)

ASOS 118.45	FORT WORTH CENTER 128.4 269.37	CLINTON/SHERMAN TOWER* 119.6 (CTAF) 0 256.9	GND CON 121.7 239.0	UNICOM 122.95
-----------------------	--	---	-------------------------------	-------------------------



CATEGORY	A	B	C	D	E
S-ILS 17R	2122-3/4		200 (200-3/4)		
S-LOC 17R	2260-1		338 (400-1)		
CIRCLING	2340-1 418 (500-1)	2380-1 458 (500-1)	2380-1½ 458 (500-1½)	2620-2¼ 698 (700-2¼)	2620-2½ 698 (700-2½)



BURNS FLAT, OKLAHOMA
Amdt 8 27APR17

35°20'N-99°12'W

ILS or LOC RWY 17R

CLINTON/SHERMAN (CSM)

SC-1, 10 JUL 2025 to 07 AUG 2025

SC-1, 10 JUL 2025 to 07 AUG 2025

BURNS FLAT, OKLAHOMA

25219

LOC I-BZF 109.5	APP CRS 175°	Rwy Ldg TDZE Apt Elev	13503 1922 1922
---------------------------	------------------------	-----------------------------	--

AL-778 (FAA)

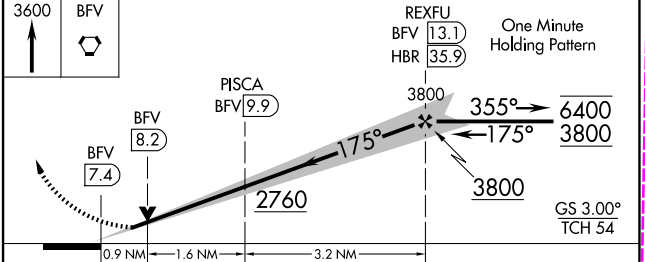
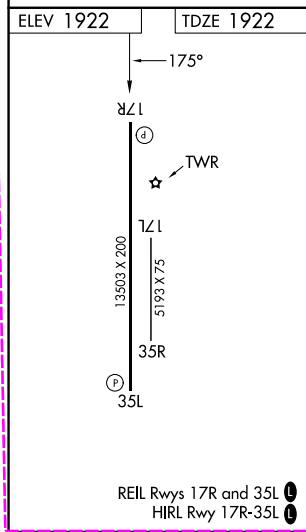
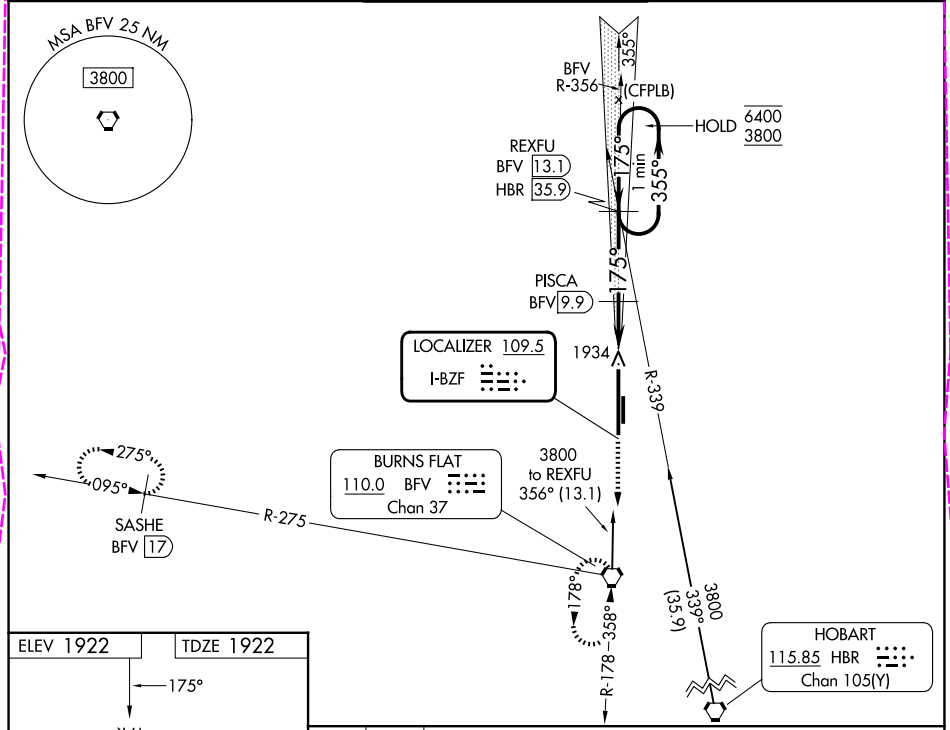
ILS or LOC RWY 17R
CLINTON/SHERMAN (CSM)

DME required.

⚠ Circling NA east of Rwy 17R-35L. Simultaneous reception of BZF ILS and BFV DME required.

MISSED APPROACH: Climb to 3600 direct BFV VORTAC and hold, continue climb-in-hold to 3600. (TACAN aircraft climb to 3000 then climbing right turn to 5000 on heading 220° and on BFV VORTAC R-275 to SASHE/BFV 17 DME and hold west, left turn, 095° inbound).

ASOS 118.45	FORT WORTH CENTER 128.4 269.37	CLINTON/SHERMAN TOWER* 119.6 (CTAF) 0 256.9	GND CON 121.7 239.0	UNICOM 122.95
-----------------------	--	---	-------------------------------	-------------------------



CATEGORY	A	B	C	D	E
S-ILS 17R	2122-3/4	200 (200-3/4)			
S-LOC 17R	2260-1	338 (400-1)			
CIRCLING	2360-1 438 (500-1)	2380-1 458 (500-1)	2400-1 1/2 478 (500-1 1/2)	2620-2 1/4 698 (700-2 1/4)	2620-2 1/2 698 (700-2 1/2)

BURNS FLAT, OKLAHOMA
Amdt 9 07AUG25

35°20'N-99°12'W

CLINTON/SHERMAN (CSM)
ILS or LOC RWY 17R

SC-1, 07 AUG 2025 to 04 SEP 2025

SC-1, 07 AUG 2025 to 04 SEP 2025