

(JPOOL7, TTT) 24305

AL-768 (FAA)

ADDISON (ADS)
DALLAS, TEXAS

JOE POOL SEVEN DEPARTURE

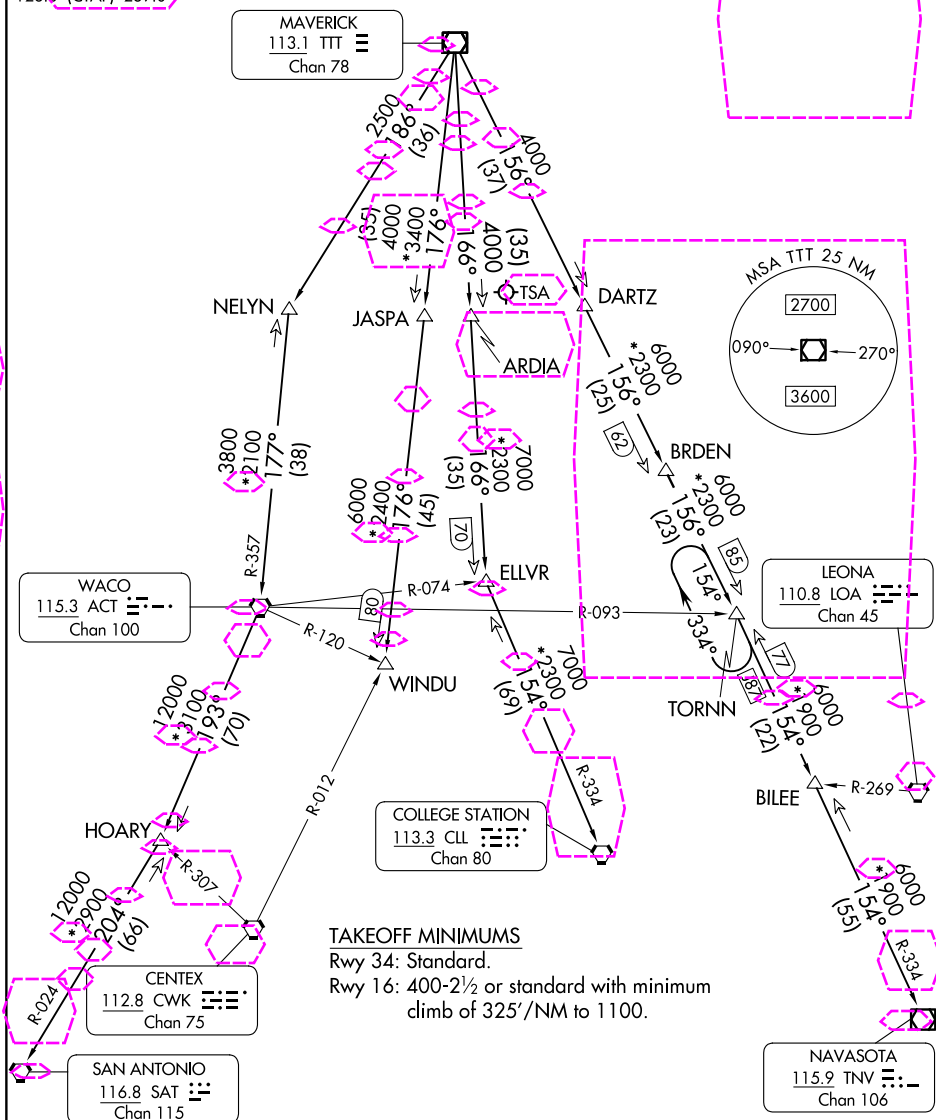
LONE STAR DEP CON
124.3 282.275
ATIS
133.4
CLNC DEL
119.55
GND CON
121.6
ADDISON TOWER*
126.0 (CTAF) 239.0

RADAR and DME required.

TOP ALTITUDE:
ASSIGNED BY ATC

SC-2, 10 JUL 2025 to 07 AUG 2025

SC-2, 10 JUL 2025 to 07 AUG 2025



(CONTINUED ON FOLLOWING PAGE)

JOE POOL SEVEN DEPARTURE

(JPOOL7, TTT) 25JAN24

DALLAS, TEXAS
ADDISON (ADS)

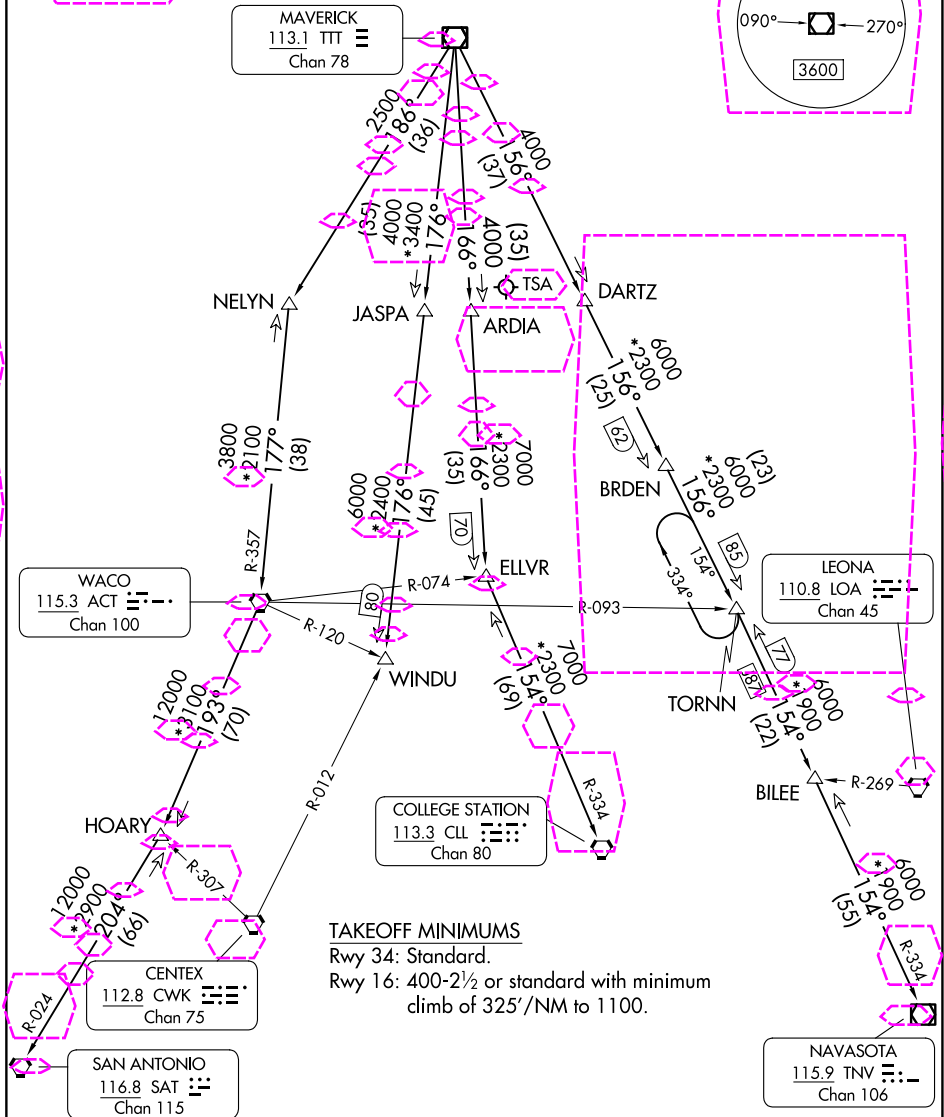
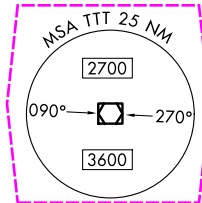
ADDISON (ADS)
DALLAS, TEXAS

JOE POOL EIGHT DEPARTURE

LONE STAR DEP CON
124.3 282.275
ATIS
133.4
CLNC DEL
119.55
GND CON
121.6
ADDISON TOWER★
126.0 (CTAF) 239.0

RADAR and DME required.

**TOP ALTITUDE:
ASSIGNED BY ATC**



NOTE: Chart not to scale.

JOE POOL EIGHT DEPARTURE

(JPOOL8.TTT) 07AUG25

DALLAS, TEXAS
ADDISON (ADS)

SC-2, 07 AUG 2025 to 04 SEP 2025

SC-2, 07 AUG 2025 to 04 SEP 2025