

HONOLULU, HAWAII

AL-754 (FAA)

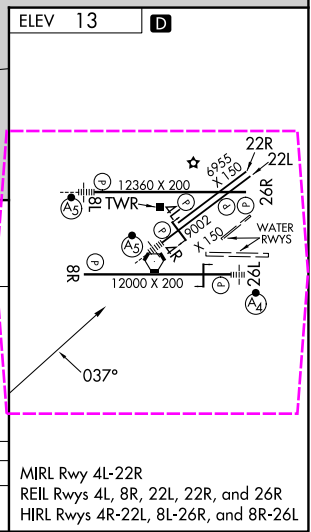
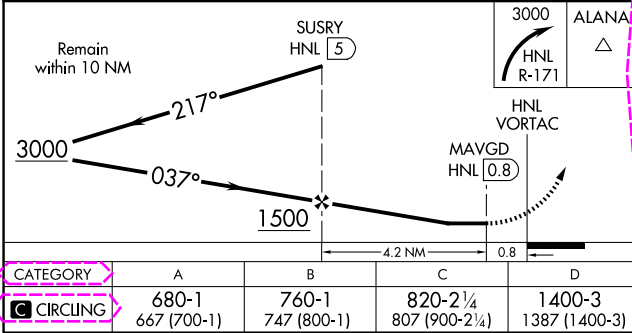
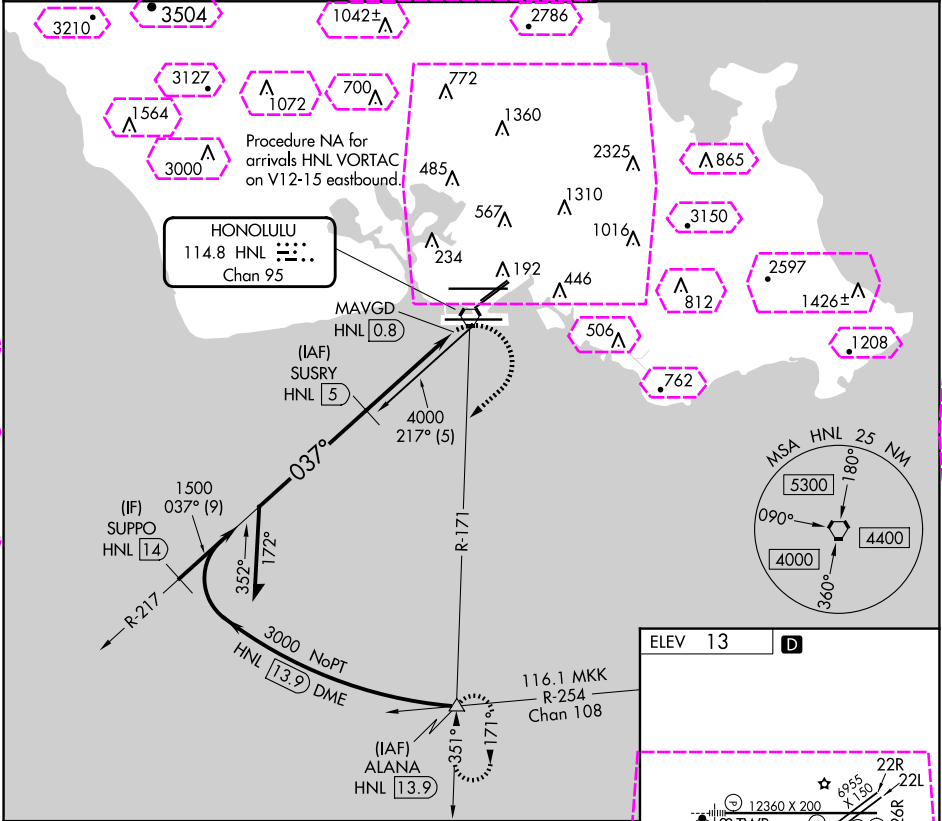
25163

VORTAC HNL 114.8 Chan 95	APP CRS 037°	Rwy Ldg TDZE Apt Elev 13
--	------------------------	--

VOR or TACAN-B
DANIEL K INOUEY INTL (HNL) (PHNL)

DME required.	MISSED APPROACH: Climbing right turn to 3000 on HNL R-171 to ALANA INT/HNL 13.9 DME and hold.
---------------	---

D-ATIS 127.9 251.15	HCF APPROACH 118.3 269.0	HONOLULU TOWER 118.1 257.8 123.9 273.575 (Rwy 8R/26L)	GND CON 121.9 348.6	CLNC DEL 121.4 281.4
-------------------------------	------------------------------------	---	-------------------------------	--------------------------------



HONOLULU, HAWAII

AL-754 (FAA)

25219

VORTAC HNL 114.8 Chan 95	APP CRS 037°	Rwy Ldg TDZE Apt Elev N/A 13
--	------------------------	--

VOR or TACAN-B
DANIEL K INOUEY INTL (HNL) (PHNL)

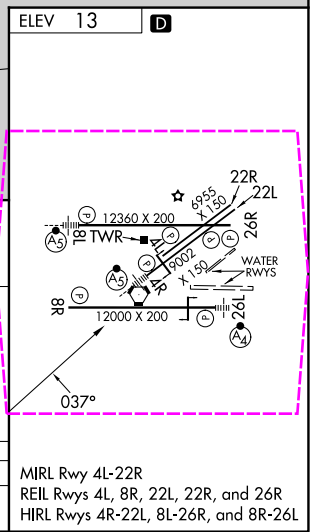
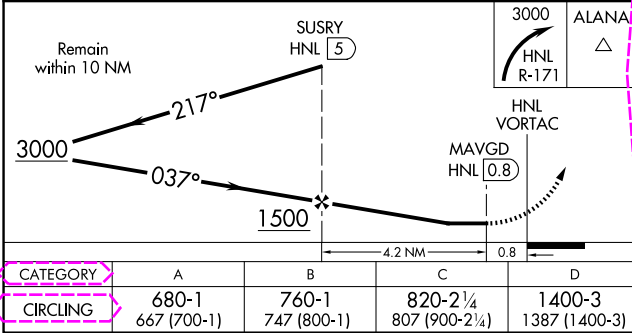
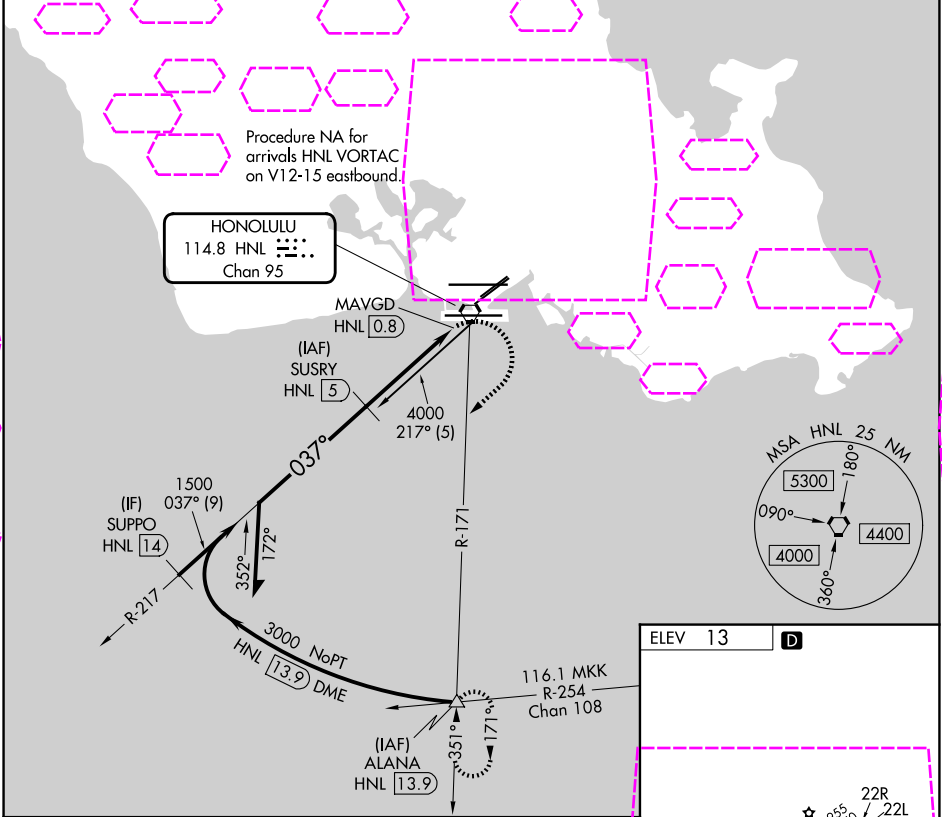
DME required.

▼ Circling Rwy 22R NA at night. Circling NA for Cats A and B northwest of Rwys 8L and 22R. Circling NA for Cats C and D north of Rwy 8L-26R. Circling NA to sea lanes 4W, 8W, 22W, and 26W.

▲

MISSED APPROACH: Climbing right turn to 3000 on HNL R-171 to ALANA INT/HNL 13.9 DME and hold.

D-ATIS 127.9 251.15	HCF APPROACH 118.3 269.0	HONOLULU TOWER 118.1 257.8 123.9 273.575 (8R/26L)	GND CON 121.9 348.6	CLNC DEL 121.4 281.4
-------------------------------	------------------------------------	---	-------------------------------	--------------------------------



HONOLULU, HAWAII
Amdt 2D 25FEB21

21°19'N-157°55'W

DANIEL K INOUEY INTL (HNL) (PHNL)
VOR or TACAN-B

PAC, 07 AUG 2025 to 02 OCT 2025

PAC, 07 AUG 2025 to 02 OCT 2025