

VORTAC HNL 114.8 Chan 95	APP CRS 305°	Rwy Ldg TDZE Apt Elev	N/A N/A 13
--	------------------------	-----------------------------	---------------------------------------

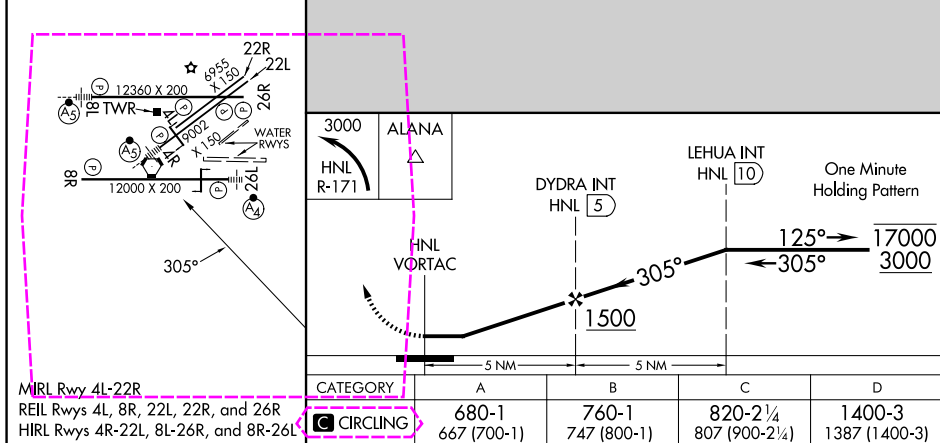
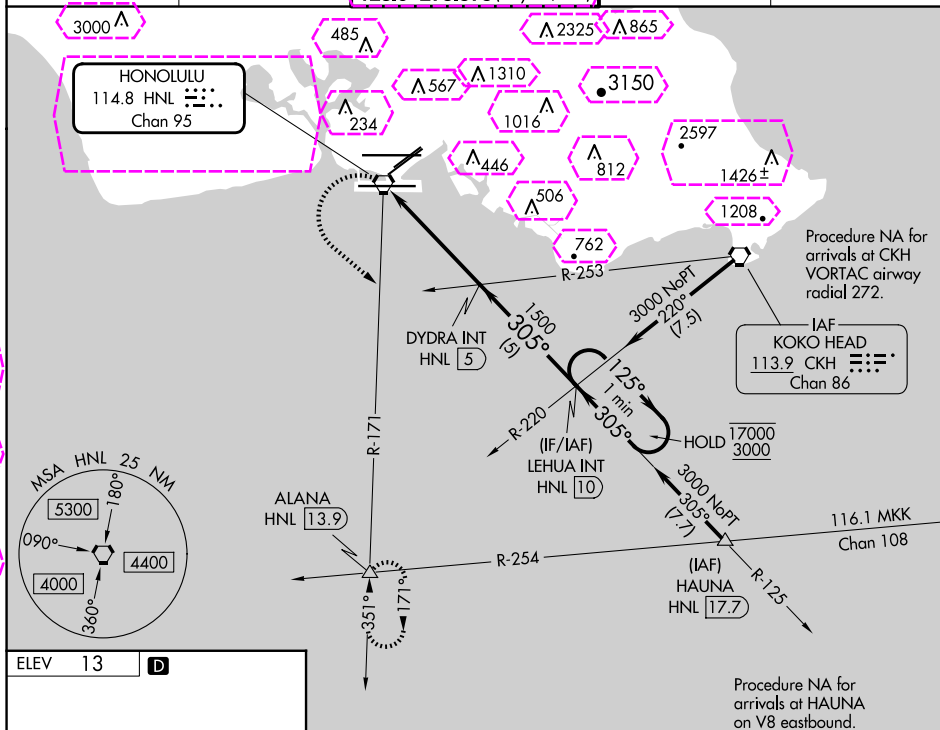
VOR or TACAN-A

DANIEL K INOUE INTL (HNL) (PHNL)

T Circling Rwy 22R NA at night. Circling NA for Cats A and B northwest of
A Rwy 8L and 22R. Circling NA for Cats C and D north of Rwy 8L-26R.
Circling NA to sea lanes 4W, 8W, 22W, and 26W.

MISSED APPROACH: Climbing
left turn to 3000 on HNL R-171 to
ALANA INT/HNL 13.9 DME and hold.

D-ATIS 127.9 251.15	HCF APPROACH 118.3 269.0	HONOLULU TOWER 118.1 257.8 123.9 273.575 (Rwy 8R/26L)	GND CON 121.9 348.6	CLNC DEL 121.4 281.4
-------------------------------	------------------------------------	---	-------------------------------	--------------------------------



HONOLULU, HAWAII

Amdt 1D 25FEB21

DANIEL K INOUE INTL (HNL) (PHNL)

VOR or TACAN-A

21°19'N-157°55'W

PAC, 12 JUN 2025 to 07 AUG 2025

PAC, 12 JUN 2025 to 07 AUG 2025

HONOLULU, HAWAII

AL-754 (FAA)

25219

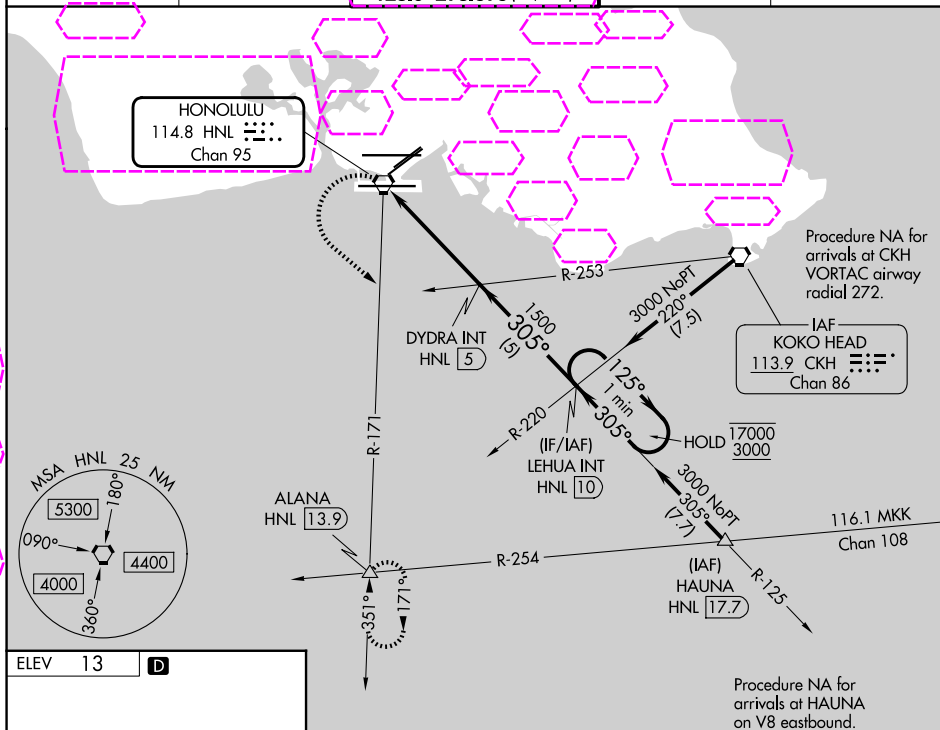
VORTAC HNL 114.8 Chan 95	APP CRS 305°	Rwy Ldg TDZE Apt Elev	N/A N/A 13
--	------------------------	-----------------------------	---------------------------------------

VOR or TACAN-A

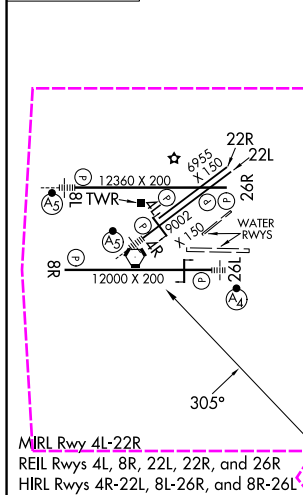
DANIEL K INOUE INTL (HNL) (PHNL)

▼ Circling Rwy 22R NA at night. Circling NA for Cats A and B northwest of Rwys 8L and 22R. Circling NA for Cats C and D north of Rwy 8L-26R. Circling NA to sea lanes 4W, 8W, 22W, and 26W.	MISSED APPROACH: Climbing left turn to 3000 on HNL R-171 to ALANA INT/HNL 13.9 DME and hold.
--	---

D-ATIS 127.9 251.15	HCF APPROACH 118.3 269.0	HONOLULU TOWER 118.1 257.8 123.9 273.575 (8R/26L)	GND CON 121.9 348.6	CLNC DEL 121.4 281.4
-------------------------------	------------------------------------	---	-------------------------------	--------------------------------



ELEV 13	D
---------	----------



3000 HNL R-171		ALANA △		LEHUA INT HNL 10		One Minute Holding Pattern			
HNL VORTAC		DYDRA INT HNL 5							
5 NM		5 NM		125° → 17000 ← 305° 3000					
CATEGORY		A		B		C		D	
CIRCLING		680-1 667 (700-1)		760-1 747 (800-1)		820-2¼ 807 (900-2¼)		1400-3 1387 (1400-3)	

HONOLULU, HAWAII

Amdt 1D 25FEB21

DANIEL K INOUE INTL (HNL) (PHNL)

21°19'N-157°55'W

VOR or TACAN-A

PAC, 07 AUG 2025 to 02 OCT 2025

PAC, 07 AUG 2025 to 02 OCT 2025