

VORTAC HNL 114.8 Chan 95	APP CRS 018°	Rwy Ldg 8950 TDZE 8 Apt Elev 13
--	------------------------	--

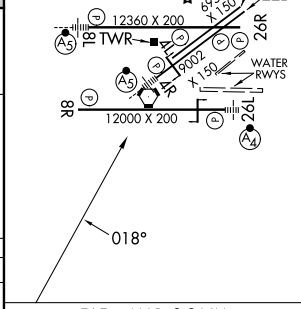
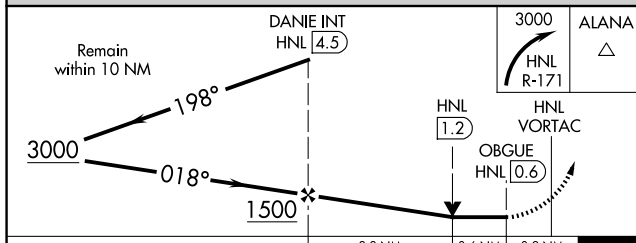
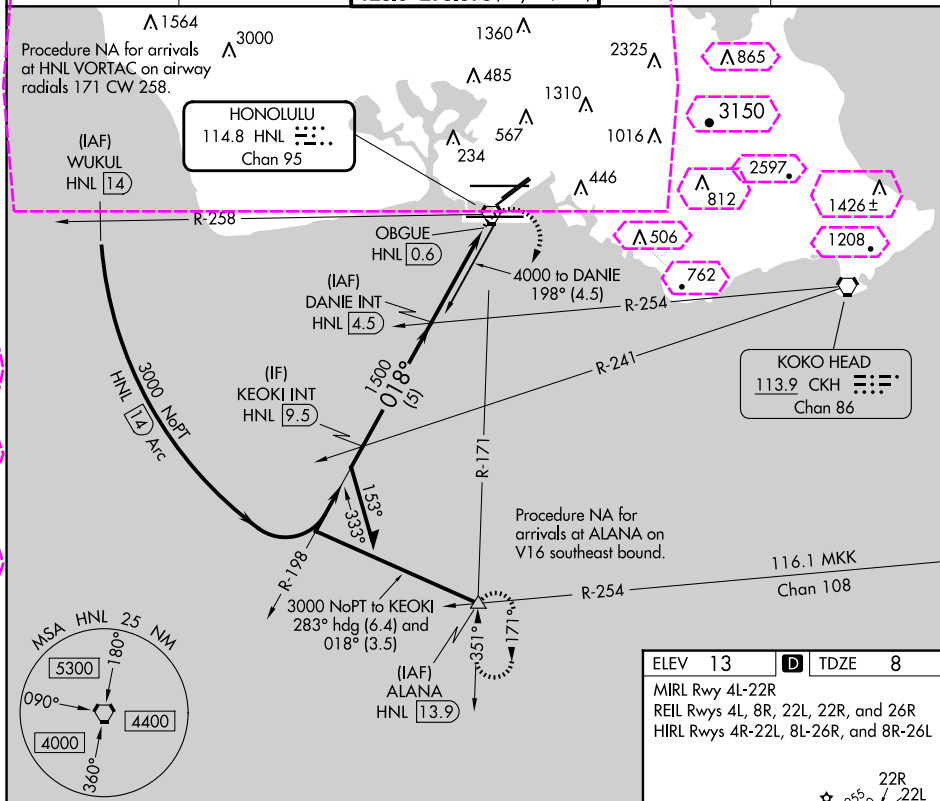
VOR or TACAN RWY 4R
DANIEL K INOUE INTL (HNL) (PHNL)

T Circling Rwy 22R NA at night. Inop table does not apply. Circling NA for
A Cats A and B northwest of Rwy 8L and 22R. Circling NA for Cats C and D
north of Rwy 8L-26R. Circling NA to sea lanes 4W, 8W, 22W, and 26W.

MALSR

MISSED APPROACH: Climbing right turn to 3000 on HNL VORTAC R-171 to ALANA INT/HNL 13.9 DME and hold.

D-ATIS	HCF APPROACH	HONOLULU TOWER	GRD CON	CLNC DEL
127.9 251.15	118.3 269.0	118.1 257.8 123.9 273.575 (Rwy 8R/26L)	121.9 348.6	121.4 281.4



CATEGORY	A	B	C	D
S-4R	460-1	452 (500-1)	460-1 $\frac{1}{4}$ 452 (500-1 $\frac{1}{4}$)	460-1 $\frac{1}{2}$ 452 (500-1 $\frac{1}{2}$)
C CIRCLING	680-1 $\frac{1}{4}$ 667 (700-1 $\frac{1}{4}$)	760-1 $\frac{1}{4}$ 747 (800-1 $\frac{1}{4}$)	820-2 $\frac{1}{4}$ 807 (900-2 $\frac{1}{4}$)	1400-3 1387 (1400-3)

FAF to MAP 3.9 NM					
Knots	60	90	120	150	180
Min:Sec	3:54	2:36	1:57	1:34	1:18

VORTAC HNL 114.8 Chan 95	APP CRS 018°	Rwy Ldg 8950 TDZE 8 Apt Elev 13
--	------------------------	--

VOR or TACAN RWY 4R
DANIEL K INOUE INTL (HNL) (PHNL)

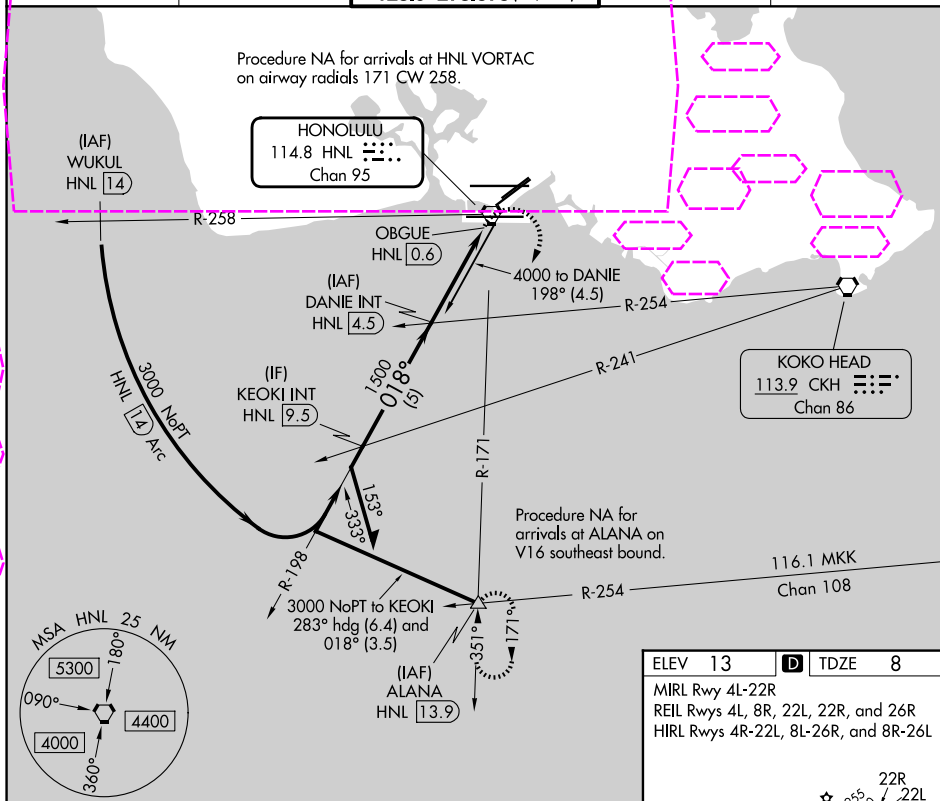
T Circling Rwy 22R NA at night. Inop table does not apply. Circling NA for
A Cats A and B northwest of Rwy 8L and 22R. Circling NA for Cats C and D
north of Rwy 8L-26R. Circling NA to sea lanes 4W, 8W, 22W, and 26W.

MALSR

MISSED APPROACH: Climbing right turn to 3000 on HNL VORTAC R-171 to ALANA INT/HNL 13.9 DME and hold.

D-ATIS	HCF APPROACH	HONOLULU TOWER	GND CON	CLNC DEL
127.9 251.15	118.3 269.0	118.1 257.8 123.9 273.575 (8R/26L)	121.9 348.6	121.4 281.4

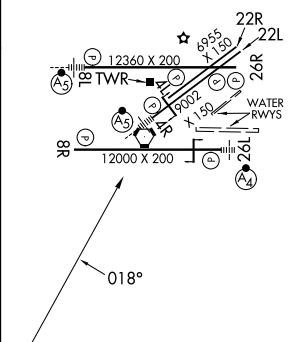
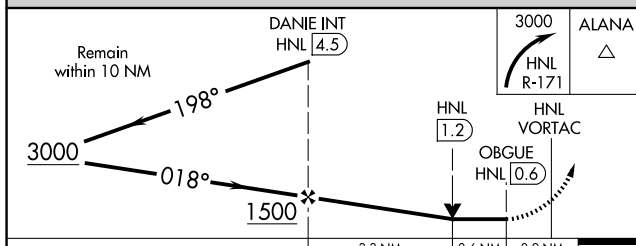
Procedure NA for arrivals at HNL VORTAC
on airway radials 171 CW 258.



Procedure NA for arrivals at ALANA on V16 southeast bound

116.1 MKK
Chan 108

ELEV 13	D	TDZE 8
MIRL Rwy 4L-22R		
REIL Rwys 4L, 8R, 22L, 22R, and 26R		
HIRL Rwys 4R-22L, 8L-26R, and 8R-26L		



CATEGORY	A	B	C	D
S-4R	460-1	452 (500-1)	460-1 $\frac{1}{4}$ 452 (500-1 $\frac{1}{4}$)	460-1 $\frac{1}{2}$ 452 (500-1 $\frac{1}{2}$)
CIRCLING	680-1 $\frac{1}{4}$ 667 (700-1 $\frac{1}{4}$)	760-1 $\frac{1}{4}$ 747 (800-1 $\frac{1}{4}$)	820-2 $\frac{1}{4}$ 807 (900-2 $\frac{1}{4}$)	1400-3 1387 (1400-3)

FAF to MAP 3.9 NM					
Knots	60	90	120	150	180
Min:Sec	3:54	2:36	1:57	1:34	1:18