

HONOLULU, HAWAII

AL-754 (FAA)

25163

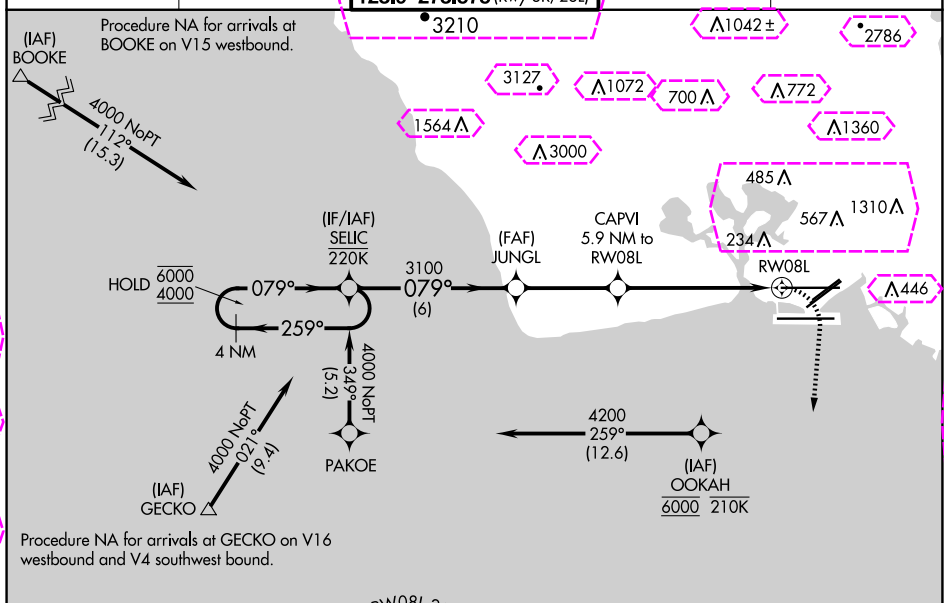
APP CRS	Rwy Ldg	12312
079°	TDZE	13
	Apt Elev	13

RNAV (GPS) Y RWY 8L

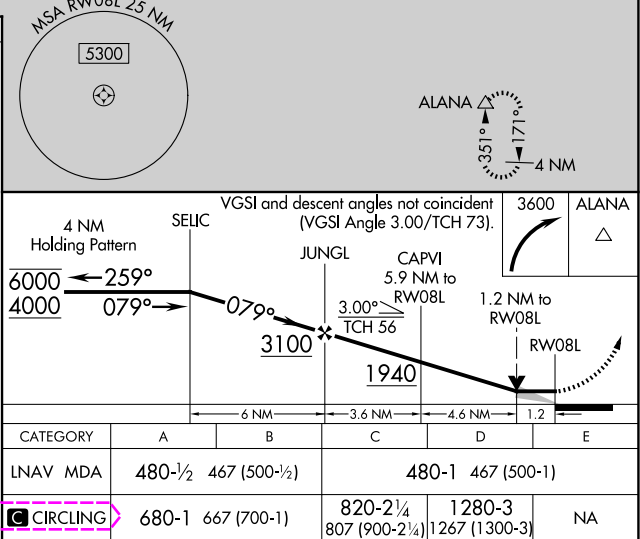
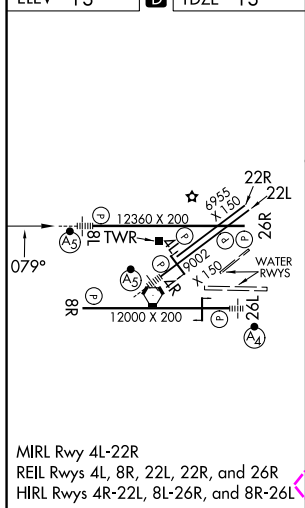
DANIEL K INOUE INTL (HNL) (PHNL)

RNP APCH - GPS.	MALSR	MISSED APPROACH:
<p>⚠ Circling Rwy 22R NA at night. For inop ALS, increase Cats C, D, and E visibility to 1½ SM. Circling NA to sea lanes 4W, 8W, 22W, and 26W. Circling NA for Cats A and B northwest of Rwy 8L-22R. Circling NA for Cats C and D north of Rwy 8L-26R. OOKAH transition NA for Cat E aircraft. Cat E restricted to USAF/USN aircraft</p>		Climbing right turn to 3600 direct ALANA and hold, continue climb-in-hold to 3600.

D-ATIS	HCF APPROACH	HONOLULU TOWER	GND CON	CLNC DEL
127.9 251.15	118.3 269.0	118.1 257.8 123.9 273.575 (Rwy 8R/26L)	121.9 348.6	121.4 281.4



ELEV 13	D	TDZE 13
---------	---	---------



HONOLULU, HAWAII
Amdt 4 16MAY24

21°19'N-157°55'W

RNAV (GPS) Y RWY 8L

DANIEL K INOUE INTL (HNL) (PHNL)

PAC, 12 JUN 2025 to 07 AUG 2025

PAC, 12 JUN 2025 to 07 AUG 2025

HONOLULU, HAWAII

AL-754 (FAA)

25219

APP CRS	Rwy Ldg	12245
079°	TDZE	13
	Apt Elev	13

RNAV (GPS) Y RWY 8L

DANIEL K INOUEY INTL (HNL) (PHNL)

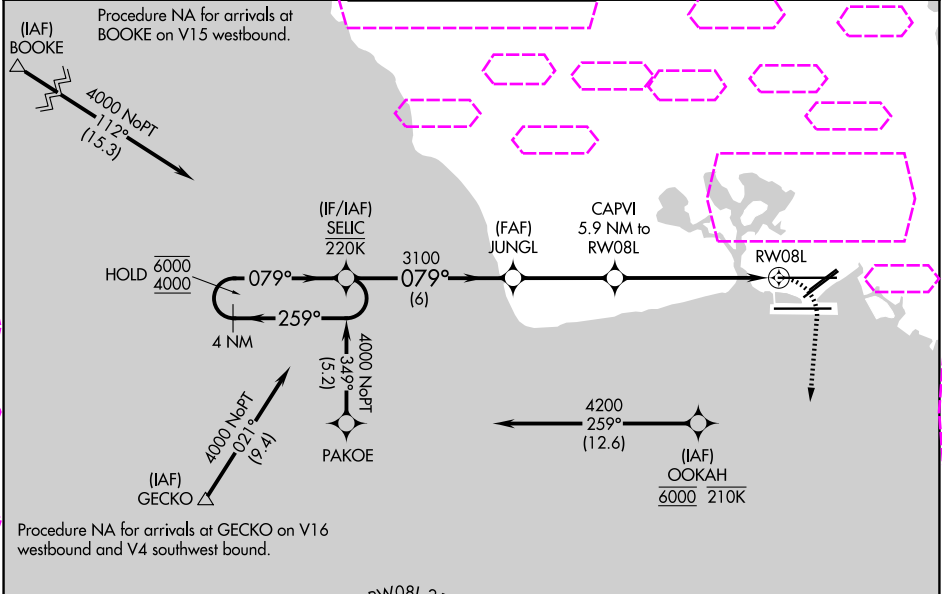
RNP APCH - GPS.

⚠ Circling Rwy 22R NA at night. For inop ALS, increase Cats C, D, and E visibility to 1½ SM. Circling NA to sea lanes 4W, 8W, 22W, and 26W. Circling NA for Cats A and B northwest of Rwy 8L-22R. Circling NA for Cats C and D north of Rwy 8L-26R. OOKAH transition NA for Cat E aircraft. Cat E restricted to USAF/USN aircraft

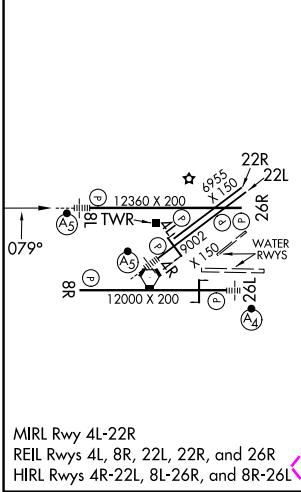
MALSR

MISSED APPROACH:
Climbing right turn to 3600 direct ALANA and hold, continue climb-in-hold to 3600.

D-ATIS	HCF APPROACH	HONOLULU TOWER	GND CON	CLNC DEL
127.9 251.15	118.3 269.0	118.1 257.8 123.9 273.575 (8R/26L)	121.9 348.6	121.4 281.4



ELEV 13	D	TDZE 13
---------	----------	---------



MSA RW08L 25 NM
5300

ALANA
351°
171'
4 NM

4 NM Holding Pattern

SELIC
6000
4000
259°
079°

JUNGL
3100
079°

CAPVI
5.9 NM to RW08L
3.00°
TCH 56
1940

1.2 NM to RW08L
RW08L

VGSI and descent angles not coincident (VGSI Angle 3.00/TCH 73).

3600 ALANA

CATEGORY	A	B	C	D	E
LNAV MDA	480-½	467 (500-½)	480-1	467 (500-1)	
CIRCLING	680-1	667 (700-1)	820-2¼ 807 (900-2¼)	1280-3 1267 (1300-3)	NA

HONOLULU, HAWAII
Amdt 4 16MAY24

21°19'N-157°55'W

DANIEL K INOUEY INTL (HNL) (PHNL)

RNAV (GPS) Y RWY 8L

PAC, 07 AUG 2025 to 02 OCT 2025

PAC, 07 AUG 2025 to 02 OCT 2025