

HONOLULU, HAWAII

AL-754 (FAA)

25163

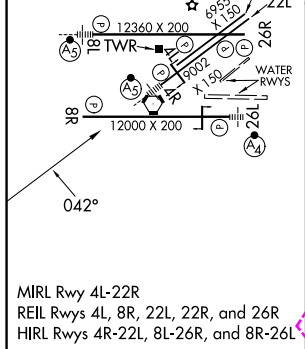
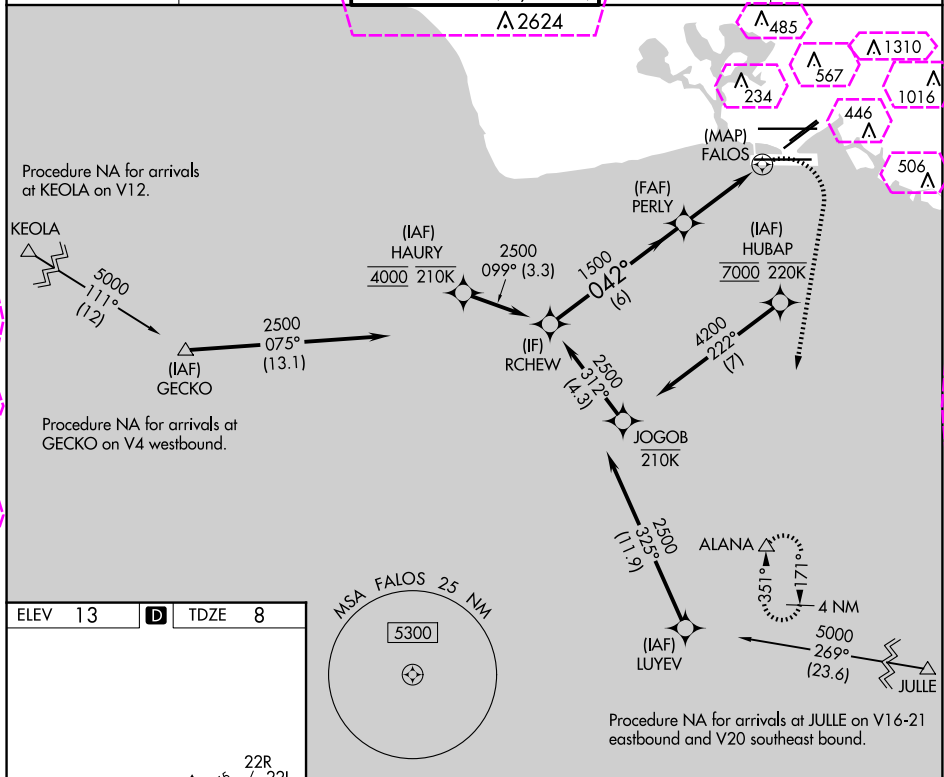
APP CRS	Rwy Ldg	8950
042°	TDZE	8
	Apt Elev	13

RNAV (GPS) Y RWY 4R

DANIEL K INOUEY INTL (HNL) (PHNL)

RNP APCH.	MALSR	MISSED APPROACH: Climbing right turn to 3000 direct ALANA and hold.
<p>▼ Circling Rwy 22R NA at night. Circling NA for Cats A and B northwest of Rwy 8L and 22R. Circling NA for Cats C and D north of Rwy 8L-26R. For inop ALS, increase LNAV Cat E visibility to 2 SM. Circling NA to sea lanes 4W, 8W, 22W, and 26W. HUBAP transition NA for Cat E aircraft. HAURY transition NA for Cat E aircraft.</p>		

D-ATIS	HCF APPROACH	HONOLULU TOWER	GND CON	CLNC DEL
127.9 251.15	118.3 269.0	118.1 257.8 123.9 273.575 (Rwy 8R/26L)	121.9 348.6	121.4 281.4



RCHEW					VGSI and descent angles not coincident (VGSI Angle 3.00/TCH 71).					3000		ALANA △	
2500					042°					PERLY		1500	
					3.00° TCH 55					1.3 NM to FALOS		FALOS	
					6 NM					2.2 NM		1.3 NM	
										1 NM			
CATEGORY		A		B		C		D		E			
LNAV MDA		460-¾		452 (500-¾)		460-⅞		452 (500-⅞)		460-1¾ 452 (500-1¾)			
CIRCLING		680-1¼ 667 (700-1¼)		760-1¼ 747 (800-1¼)		820-2¼ 807 (900-2¼)		1400-3 1387 (1400-3)		NA			

HONOLULU, HAWAII
Amdt 3A 25FEB21

21°19'N-157°55'W

DANIEL K INOUEY INTL (HNL) (PHNL)
RNAV (GPS) Y RWY 4R

PAC. 12 JUN 2025 to 07 AUG 2025

PAC. 12 JUN 2025 to 07 AUG 2025

HONOLULU, HAWAII

AL-754 (FAA)

25219

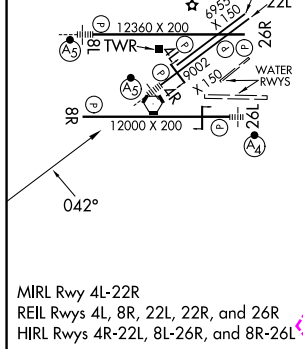
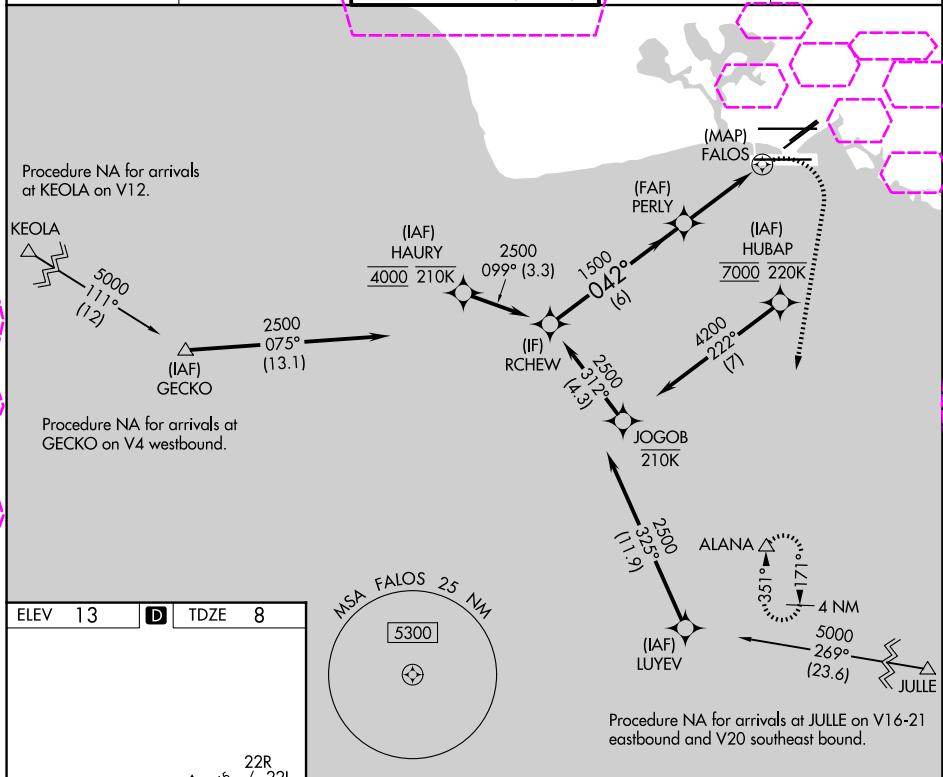
APP CRS	Rwy Ldg	8950
042°	TDZE	8
	Apt Elev	13

RNAV (GPS) Y RWY 4R

DANIEL K INOUEY INTL (HNL) (PHNL)

RNP APCH.	MALSR	MISSED APPROACH: Climbing right turn to 3000 direct ALANA and hold.
<p>▼ Circling Rwy 22R NA at night. Circling NA for Cats A and B northwest of Rwy 8L and 22R. Circling NA for Cats C and D north of Rwy 8L-26R. For inop ALS, increase LNAV Cat E visibility to 2 SM. Circling NA to sea lanes 4W, 8W, 22W, and 26W. HUBAP transition NA for Cat E aircraft. HAURY transition NA for Cat E aircraft.</p>		

D-ATIS	HCF APPROACH	HONOLULU TOWER	GND CON	CLNC DEL
127.9 251.15	118.3 269.0	118.1 257.8 123.9 273.575 (8R/26L)	121.9 348.6	121.4 281.4



<div>RCHEW</div> <div>2500</div> <div>042°</div> <div>1500</div> <div>6 NM</div> <div>2.2 NM</div> <div>1.3 NM</div> <div>1 NM</div> <div>VGSI and descent angles not coincident (VGSI Angle 3.00/TCH 71).</div> <div>3.00° TCH 55</div> <div>1.3 NM to FALOS</div> <div>FALOS</div> <div>PERLY</div> <div>3000</div> <div>ALANA</div> <div>△</div>					
CATEGORY	A	B	C	D	E
LNAV MDA	460-3/4	452 (500-3/4)	460-7/8	452 (500-7/8)	460-13/4 452 (500-13/4)
CIRCLING	680-1 1/4 667 (700-1 1/4)	760-1 1/4 747 (800-1 1/4)	820-2 1/4 807 (900-2 1/4)	1400-3 1387 (1400-3)	NA

HONOLULU, HAWAII
Amdt 3A 25FEB21

21°19'N-157°55'W

DANIEL K INOUEY INTL (HNL) (PHNL)
RNAV (GPS) Y RWY 4R

PAC. 07 AUG 2025 to 02 OCT 2025

PAC. 07 AUG 2025 to 02 OCT 2025