

HONOLULU, HAWAII

AL-754 (FAA)

25163

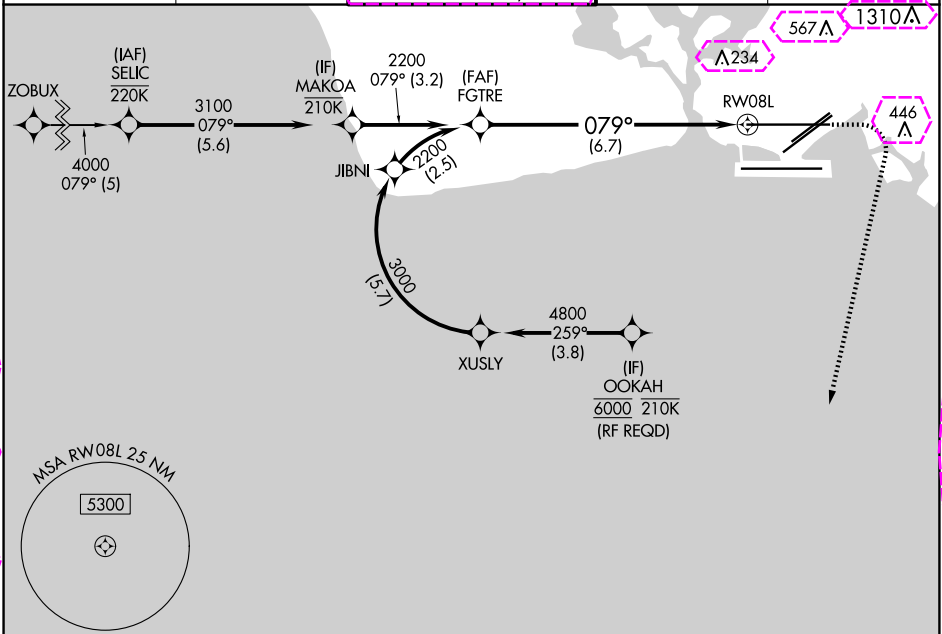
APP CRS	Rwy Ldg
079°	12312
TDZE	13
Apt Elev	13

RNAV (RNP) Z RWY 8L

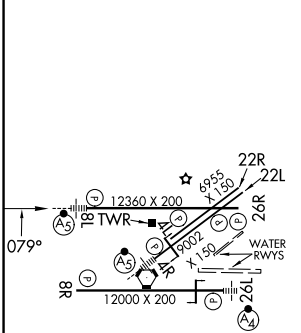
DANIEL K INOUE INTL (HNL) (PHNL)

RNP AR APCH - GPS.	MALSR	MISSED APPROACH: Climb to 420 then climbing right turn to 3000 direct ALANA and hold.
For uncompensated Baro-VNAV systems, procedure NA below 17°C or above 54°C. For inop ALS, increase RNP 0.15 DA all Cnts visibility to ½ SM.		

D-ATIS	HCF APPROACH	HONOLULU TOWER	GND CON	CLNC DEL
127.9 251.15	118.3 269.0	118.1 257.8 123.9 273.575 (Rwy 8R/26L)	121.9 348.6	121.4 281.4



ELEV 13	D	TDZE 13
---------	---	---------



MIRL Rwy 4L-22R
REIL Rwy 4L, 8R, 22L, 22R, and 26R
HIRL Rwy 4R-22L, 8L-26R, and 8R-26L

VGS and RNAV glidepath not coincident (VGS Angle 3.00/TCH 73).				
MAKOA	FGTR	2200	3100	079°
GP 3.00° TCH 56				
See planview for multiple IF locations.				
RWY 8L				
ALANA				
420 3000				
3.51° 171° 4 NM				
CATEGORY				
A B C D				
RNP 0.15 DA				
285-½ 272 (300-½)				
RNP 0.30 DA				
347-½ 334 (400-½)				

AUTHORIZATION REQUIRED

HONOLULU, HAWAII
Amdt 4 16MAY24

21°19'N-157°55'W

DANIEL K INOUE INTL (HNL) (PHNL)
RNAV (RNP) Z RWY 8L

PAC, 12 JUN 2025 to 07 AUG 2025

PAC, 12 JUN 2025 to 07 AUG 2025

HONOLULU, HAWAII

AL-754 (FAA)

25219

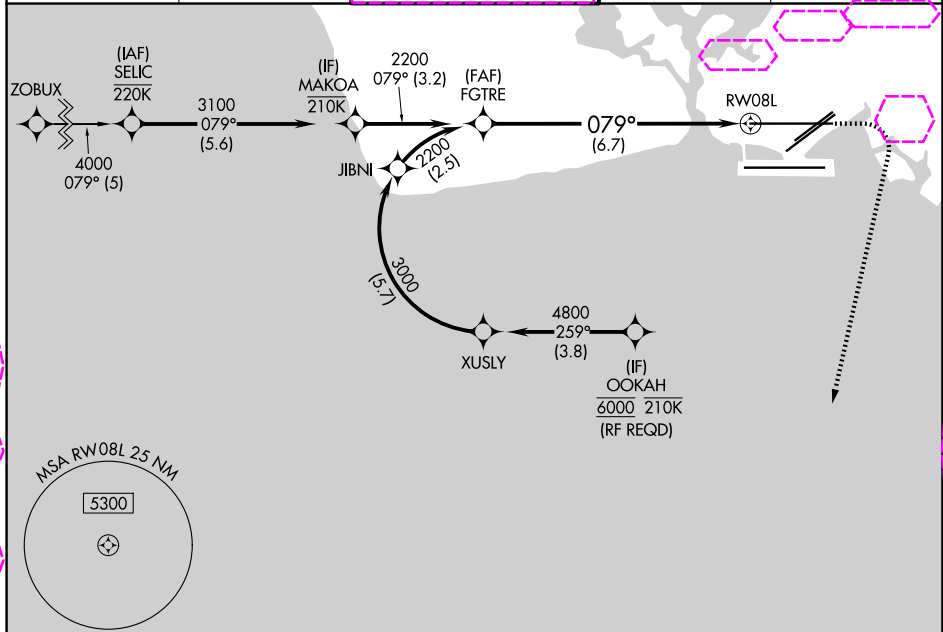
APP CRS	Rwy Ldg
079°	12245
TDZE	13
Apt Elev	13

RNAV (RNP) Z RWY 8L

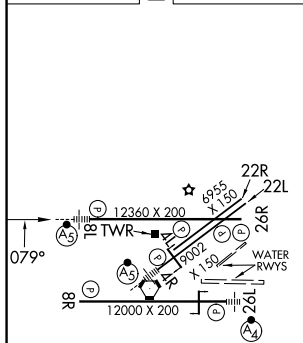
DANIEL K INOUE INTL (HNL) (PHNL)

RNP AR APCH - GPS.	MALSR	MISSED APPROACH: Climb to 420 then climbing right turn to 3000 direct ALANA and hold.
For uncompensated Baro-VNAV systems, procedure NA below 17°C or above 54°C. For inop ALS, increase RNP 0.15 DA all Cots visibility to ½ SM.		

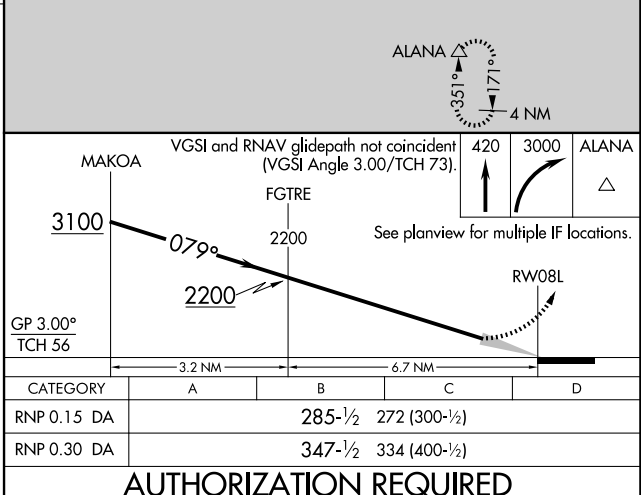
D-ATIS	HCF APPROACH	HONOLULU TOWER	GND CON	CLNC DEL
127.9 251.15	118.3 269.0	118.1 257.8 123.9 273.575 (8R/26L)	121.9 348.6	121.4 281.4



ELEV 13	D	TDZE 13
---------	---	---------



MIRL Rwy 4L-22R
REIL Rwy 4L, 8R, 22L, 22R, and 26R
HIRL Rwy 4R-22L, 8L-26R, and 8R-26L



AUTHORIZATION REQUIRED

HONOLULU, HAWAII
Amdt 4 16MAY24

21°19'N-157°55'W

DANIEL K INOUE INTL (HNL) (PHNL)
RNAV (RNP) Z RWY 8L

PAC, 07 AUG 2025 to 02 OCT 2025

PAC, 07 AUG 2025 to 02 OCT 2025