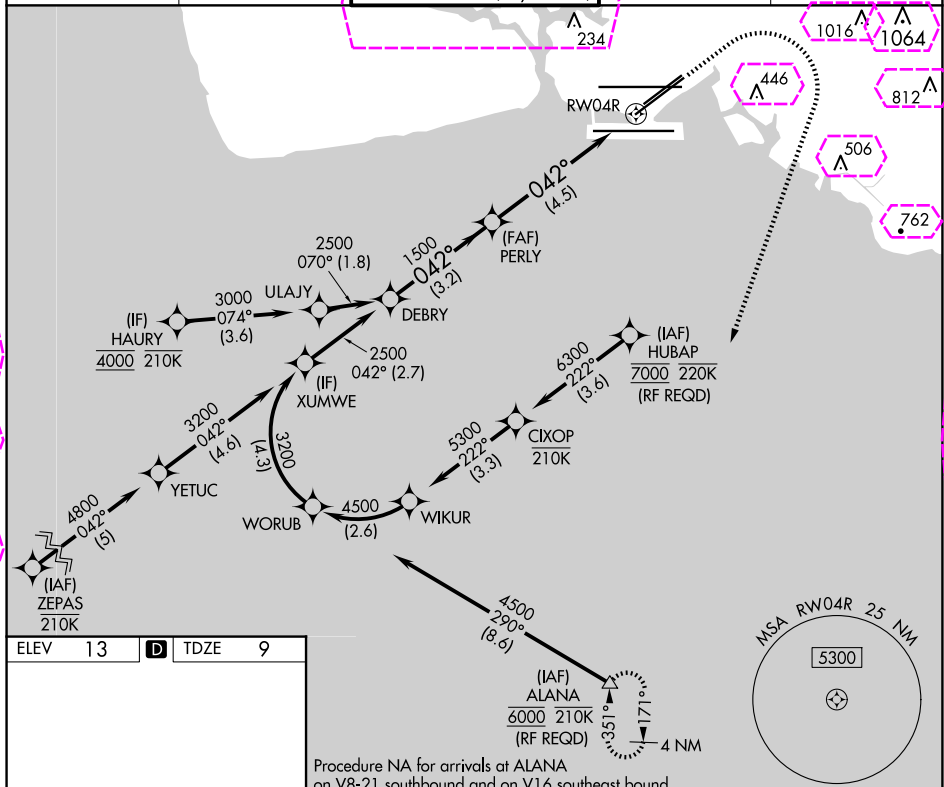


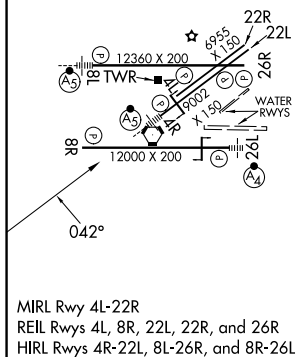
RNAV (RNP) Z RWY 4R
DANIEL K INOUE INTL (HNL) (PHNL)

MISSED APPROACH: Climb to 580 then climbing right turn to 3000 direct ALANA and hold.

D-ATIS 127.9 251.15	HCF APPROACH 118.3 269.0	HONOLULU TOWER 118.1 257.8 123.9 273.575 (Rwy 8R/26L)	GND CON 121.9 348.6	CLNC DEL 121.4 281.4
------------------------	-----------------------------	---	------------------------	-------------------------



Procedure NA for arrivals at ALANA
on V8-21 southbound and on V16 southeast bound.



DEBY VGS1 and RNAV glidepath not coincident (VGS1 Angle 3.00/TCH 71).

580 3000 ALANA

2500 042° 1500

GP 3.00° TCH 55

See planview for multiple IF locations.

3.2 NM 4.5 NM RW04R

CATEGORY	A	B	C	D
RNP 0.30 DA	259-½ 250 (300-½)	277-½ 268 (300-½)	432-¾	423 (500-¾)

AUTHORIZATION REQUIRED

DANIEL K INOUE INTL (HNL) (PHNL)

21°19'N-157°55'W

RNAV (RNP) Z RWY 4R

HONOLULU, HAWAII

AL-754 (FAA)

25219

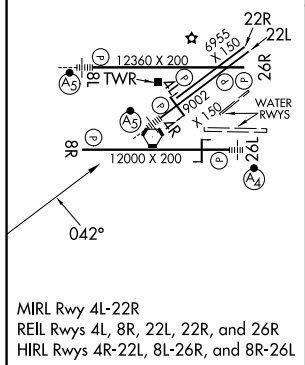
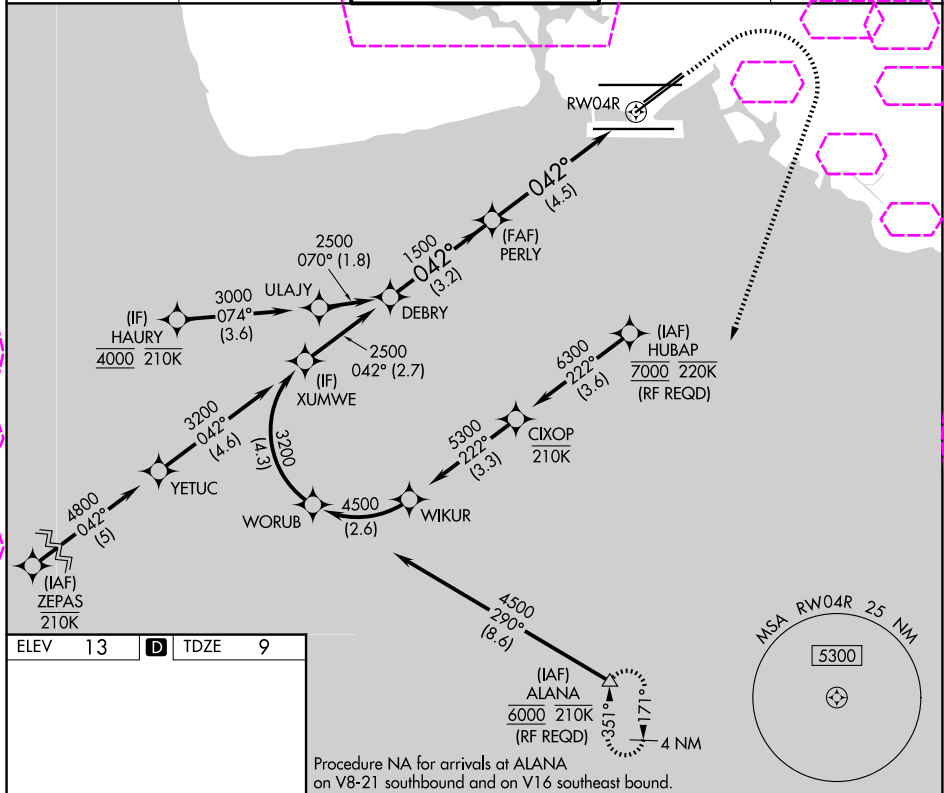
APP CRS	Rwy Ldg	8950
042°	TDZE	9
	Apt Elev	13

RNAV (RNP) Z RWY 4R

DANIEL K INOUE INTL (HNL) (PHNL)

RNP AR APCH.	MALSR	MISSED APPROACH: Climb to 580 then climbing right turn to 3000 direct ALANA and hold.
▼ For uncompensated Baro-VNAV systems, procedure NA below 17°C or above 54°C. For inop ALS, increase RNP 0.30 Cat A visibility to ¾ SM and Cat B to ½ SM.	AS	

D-ATIS	HCF APPROACH	HONOLULU TOWER	GND CON	CLNC DEL
127.9 251.15	118.3 269.0	118.1 257.8 123.9 273.575 (8R/26L)	121.9 348.6	121.4 281.4



DEBRY	VGSI and RNAV glidepath not coincident (VGSI Angle 3.00/TCH 71).	580	3000	ALANA
2500	PERLY	See planview for multiple IF locations.		
GP 3.00° TCH 55	1500			
	3.2 NM	4.5 NM		
CATEGORY	A	B	C	D
RNP 0.30 DA	259-½ 250 (300-½)	277-½ 268 (300-½)	432-¾ 423 (500-¾)	
AUTHORIZATION REQUIRED				

HONOLULU, HAWAII
Amdt 2 30JAN20

21°19'N-157°55'W

DANIEL K INOUE INTL (HNL) (PHNL)
RNAV (RNP) Z RWY 4R

PAC. 07 AUG 2025 to 02 OCT 2025

PAC. 07 AUG 2025 to 02 OCT 2025