

HONOLULU, HAWAII

AL-754 (FAA)

25163

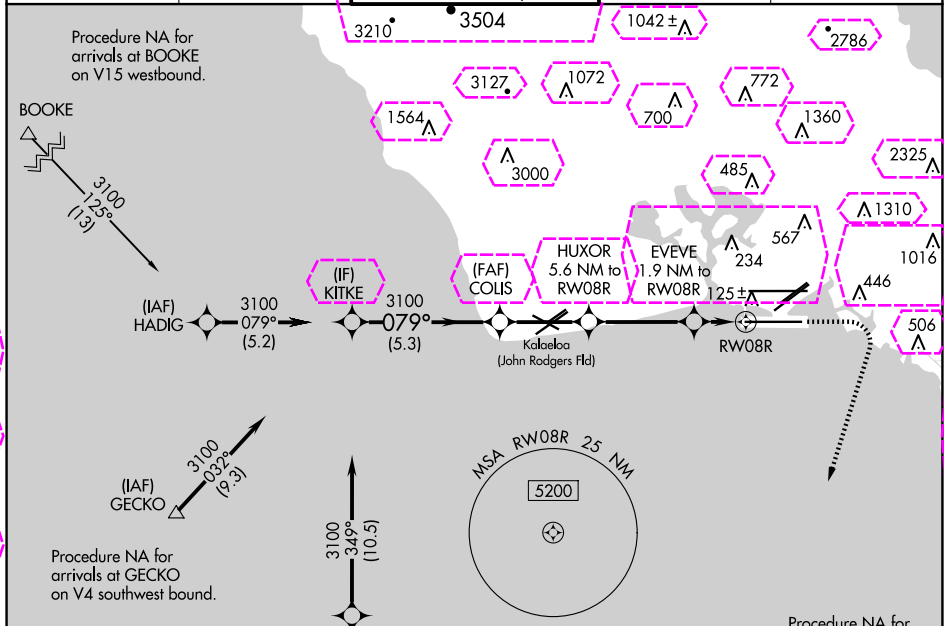
APP CRS	Rwy Ldg	12000
079°	TDZE	10
	Apt Elev	13

RNAV (GPS) RWY 8R

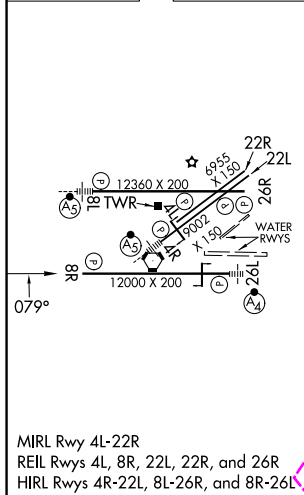
DANIEL K INOUE INTL (HNL) (PHNL)

RNP APCH.	MISSED APPROACH: Climb to 500 then climbing right turn to 3100 direct ALANA and hold, continue climb-in-hold to 3100.
<p>▼ Circling Rwy 22R NA at night. Circling NA for Cats A and B northwest of Rwy 8L and 22R. Circling NA for Cats C, D, and E north of Rwy 8L-26R. Circling NA to Sea Lanes 4W, 8W, 22W, and 26W. Cat E restricted to USAF/USN Aircraft.</p>	

D-ATIS	HCF APPROACH	HONOLULU TOWER	GND CON	CLNC DEL
127.9 251.15	118.3 269.0	118.1 257.8 123.9 273.575 (Rwy 8R/26L)	121.9 348.6	121.4 281.4



ELEV 13	TDZE 10
---------	---------



CATEGORY	A	B	C	D	E
LNAV MDA	360-1	350 (400-1)	360-1	350 (400-1)	360-1
CIRCLING	680-1 667 (700-1)	760-1 747 (800-1)	820-2¼ 807 (900-2¼)	1340-3 1327 (1400-3)	2020-3 2007 (2100-3)

HONOLULU, HAWAII

Amtd 1 17JUN21

21°19'N-157°55'W

RNAV (GPS) RWY 8R

HONOLULU, HAWAII

AL-754 (FAA)

25219

APP CRS	Rwy Ldg	12000
079°	TDZE	10
	Apt Elev	13

RNAV (GPS) RWY 8R

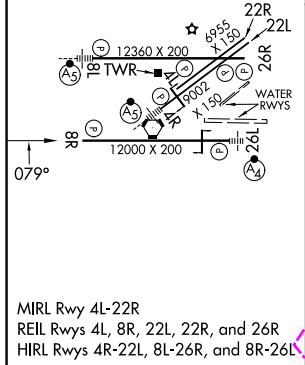
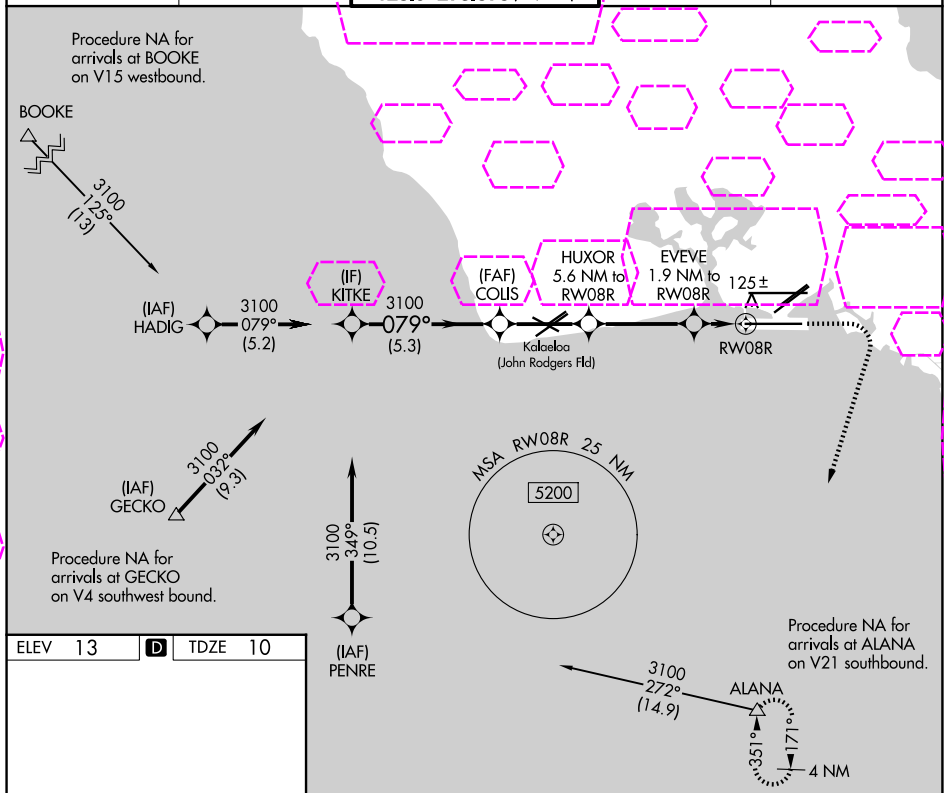
DANIEL K INOUE INTL (HNL) (PHNL)

RNP APCH.

⚠ Circling Rwy 22R NA at night. Circling NA for Cats A and B northwest of Rwy 8L and 22R. Circling NA for Cats C, D, and E north of Rwy 8L-26R. Circling NA to Sea Lanes 4W, 8W, 22W, and 26W. Cat E restricted to USAF/USN Aircraft.

MISSED APPROACH: Climb to 500 then climbing right turn to 3100 direct ALANA and hold, continue climb-in-hold to 3100.

D-ATIS	HCF APPROACH	HONOLULU TOWER	GND CON	CLNC DEL
127.9 251.15	118.3 269.0	118.1 257.8 123.9 273.575 (8R/26L)	121.9 348.6	121.4 281.4



VGSI and descent angles not coincident (VGSI Angle 3.00/TCH 75)					500	3100	ALANA
KITKE	COLIS	HUXOR	EVEVE		↑	↷	△
		5.6 NM to RW08R	1.9 NM to RW08R				
3100	3100	2000	700				
5.3 NM 3.2 NM 3.7 NM 1.1 NM 0.8 NM							
CATEGORY	A	B	C	D	E		
LNAV MDA	360-1 350 (400-1)						
CIRCLING	680-1 667 (700-1)	760-1 747 (800-1)	820-2½ 807 (900-2½)	1340-3 1327 (1400-3)	2020-3 2007 (2100-3)		

HONOLULU, HAWAII
Amdt 1 17JUN21

21°19'N-157°55'W

DANIEL K INOUE INTL (HNL) (PHNL)

RNAV (GPS) RWY 8R

PAC, 07 AUG 2025 to 02 OCT 2025

PAC, 07 AUG 2025 to 02 OCT 2025