

HONOLULU, HAWAII

AL-754 (FAA)

25163

APP CRS	Rwy Ldg	6952
042°	TDZE	10
	Apt Elev	13

RNAV (GPS) RWY 4L

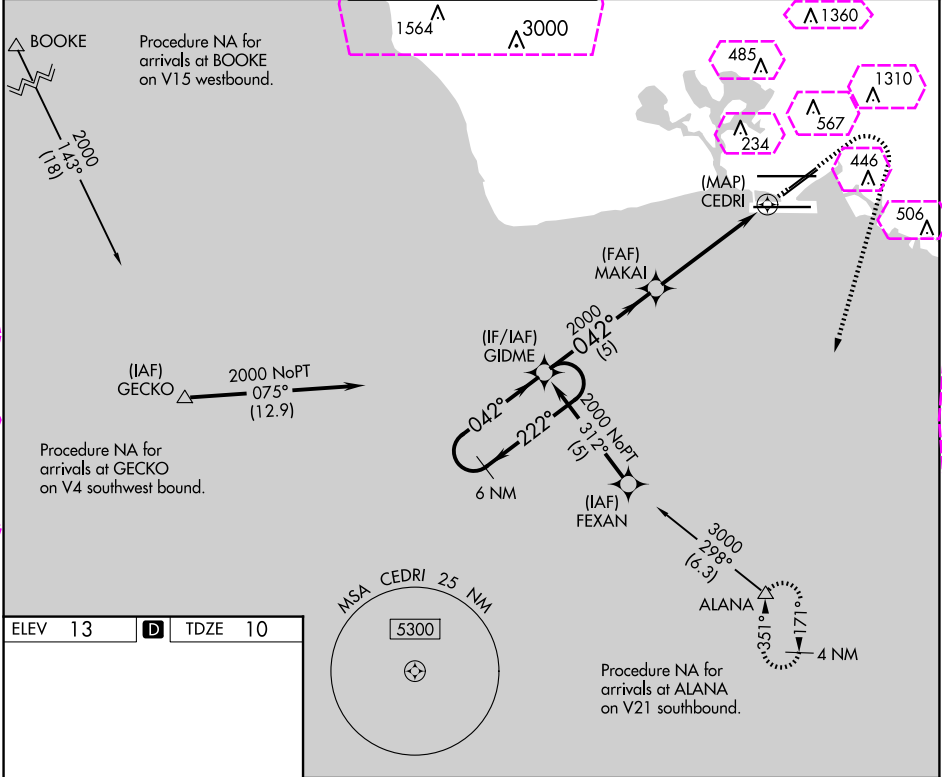
DANIEL K INOUEY INTL (HNL) (PHNL)

RNP APCH.

⚠ Circling Rwy 22R NA at night. Circling NA for Cats A and B northwest of Rwys 8L and 22R. Circling NA for Cats C, D, and E north of Rwy 8L-26R. Circling NA to Sea Lanes 4W, 8W, 22W, and 26W. Rwy 4L helicopter visibility reduction below $\frac{3}{4}$ SM NA.

⚠ MISSED APPROACH: Climb to 500 then climbing right turn to 3000 direct ALANA and hold.

D-ATIS	HCF APPROACH	HONOLULU TOWER	GND CON	CLNC DEL
127.9 251.15	118.3 269.0	118.1 257.8 123.9 273.575 (Rwy 8R/26L)	121.9 348.6	121.4 281.4





APP CRS	Rwy Ldg	6955
042°	TDZE	10
	Apt Elev	13

RNAV (GPS) RWY 4L

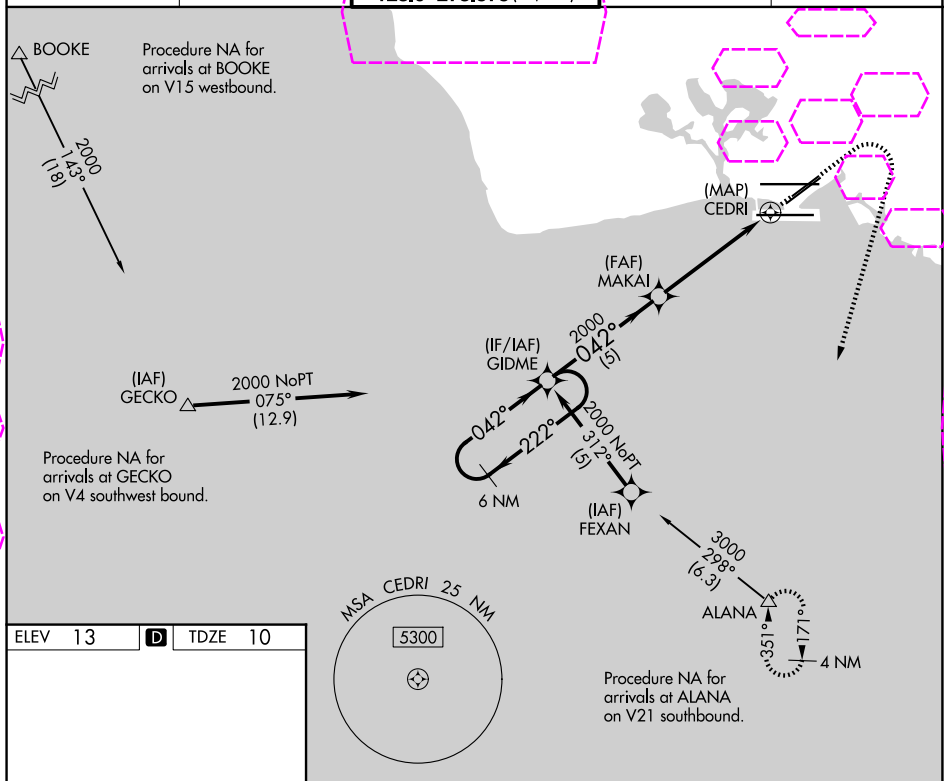
DANIEL K INOUE INTL (HNL) (PHNL)

RNP APCH.

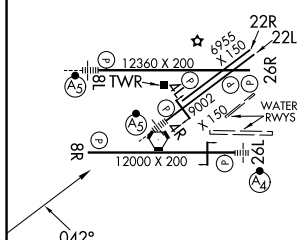
 Circling Rwy 22R NA at night. Circling NA for Cats A and B northwest of
 Rwy 8L and 22R. Circling NA for Cats C, D, and E north of Rwy 8L-26R.
 Circling NA to Sea Lanes 4W, 8W, 22W, and 26W. Rwy 4L helicopter
 visibility reduction below $\frac{3}{4}$ SM NA.

MISSED APPROACH: Climb to 500 then climbing right turn to 3000 direct ALANA and hold.

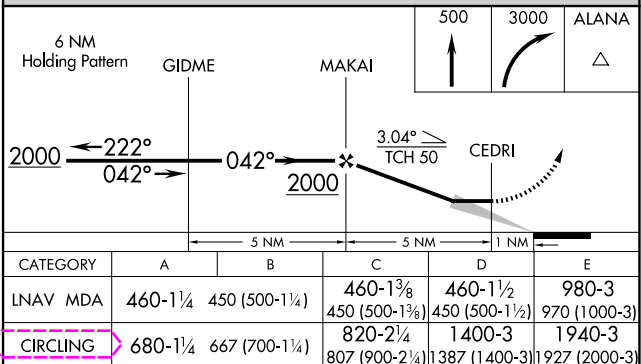
D-ATIS	HCF APPROACH	HONOLULU TOWER	GND CON	CLNC DEL
127.9 251.15	118.3 269.0	118.1 257.8 123.9 273.575 (8R/26L)	121.9 348.6	121.4 281.4



ELEV 13	D	TDZE 10
---------	----------	---------



MIRL Rwy 4L-22R
REIL Rwys 4L, 8R, 22L, 22R, and 26R
HIRL Rwys 4R-22L, 8L-26R, and 8R-26L



HONOLULU, HAWAII
Orig-C 08SEP22

DANIEL K INOUE INTL (HNL) (PHNL)

RNAV (GPS) RWY 4L

21°19'N-157°55'W

PAC, 07 AUG 2025 to 02 OCT 2025

PAC, 01 AUG 2023 10 02 UTC 12023