

LOC/DME I-EPC 109.1 Chan 28	APP CRS 304°	Rwy Ldg 12000 TDZE 10 Apt Elev 13
---	------------------------	--

LDA RWY 26L
DANIEL K INOUE INTL (HNL) (PHNL)

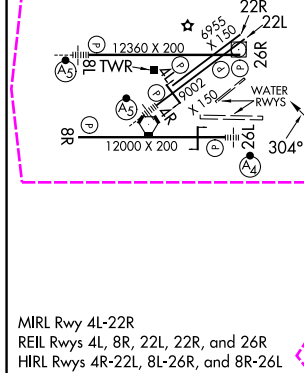
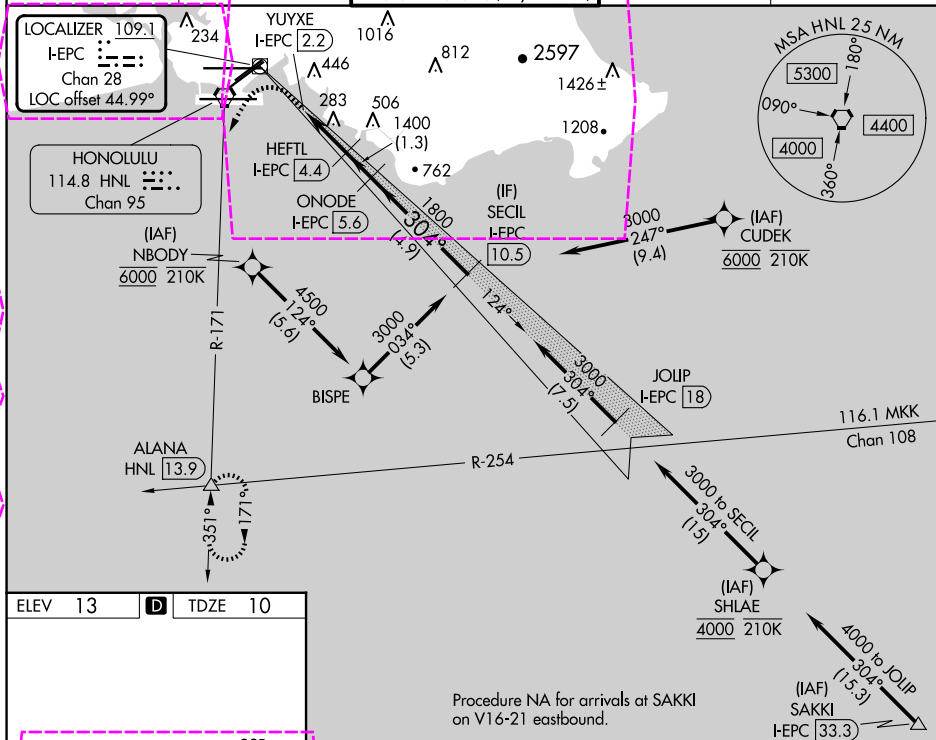
DME required. From CUDEK, NBODY, SHLAE: RNAV 1-GPS required.

NA Circling Rwy 22R NA at night. Circling NA to sea lanes 4W, 8W, 22W and 26W. NBODY transition, CUDEK transition, SHLAE transition NA for Cat E aircraft. Follow flasher lights to Rwy 26L. Procedure NA when ALS or SFL inop. Circling Cat E NA. Circling NA for Cats A and B northwest of Rwy 8L-22R. Circling NA for Cats C and D north of Rwy 8L-26R.

MALSF

MISSED APPROACH: Climb to 600 then climbing left turn to 3000 on HNL VORTAC R-171 to ALANA INT/ HNL 13.9 DME and hold.

D-ATIS	HCF APPROACH	HONOLULU TOWER	GND CON	CLNC DEL
127.9 251.15	118.3 269.0	118.1 257.8 123.9 273.575 (Rwy 8R/26L)	121.9 348.6	121.4 281.4



600 ↑	3000 HNL R-171	ALANA △	VGSI and descent angles not coincident (VGSI Angle 3.00/TCH 75).				
Use I-EPC DME when on the localizer course.			HEFTL I-EPC (4.4)	ONODE I-EPC (5.6)	SECIL I-EPC (10.5)		
YUYXE I-EPC (2.2)			$\leq 3.10^\circ$ TCH 60		304°	3000	
			2.2 NM	1.3 NM	4.9 NM		
CATEGORY	A	B	C	D	E		
S-LDA 26L	600-2 590 (600-2)						
C CIRCLING	680-2¼ 667 (700-2¼)	760-2¼ 747 (800-2¼)	820-2¼ 807 (900-2¼)	1400-3 1387 (1400-3)	NA		

HONOLULU, HAWAII
Amdt 6A 25FEB21

DANIEL K INOUE INTL (HNL) (PHNL)
LDA RWY 26L

21°19'N-157°55'W

HONOLULU, HAWAII

AL-754 (FAA)

25219

LOC/DME I-EPC	APP CRS	Rwy Ldg
109.1	304°	11830
Chan 28		TDZE 10
		Apt Elev 13

LDA RWY 26L

DANIEL K INOUE INTL (HNL) (PHNL)

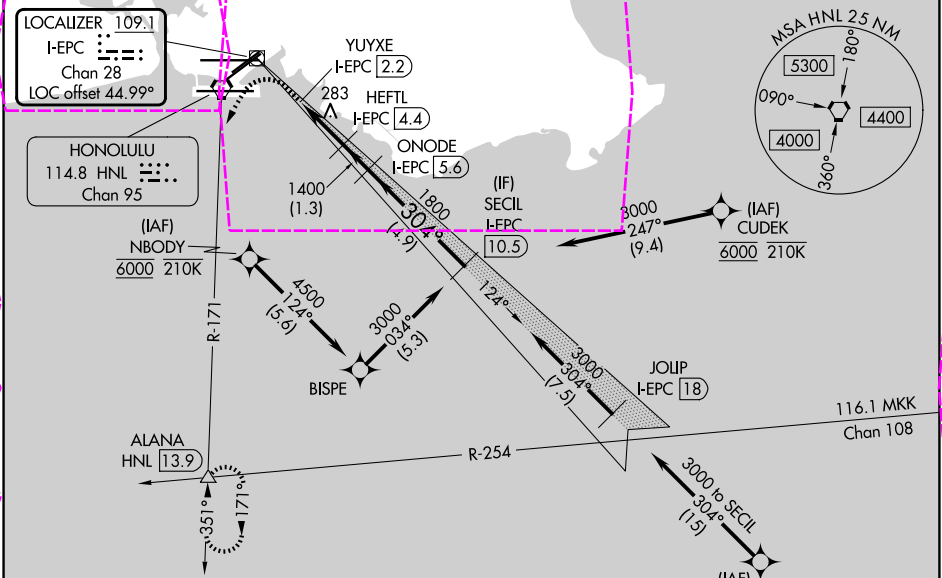
DME required. From CUDEK, NBODY, SHLAE: RNAV 1-GPS required.

NA Circling Rwy 22R NA at night. Circling NA to sea lanes 4W, 8W, 22W and 26W. NBODY transition, CUDEK transition, SHLAE transition NA for Cat E aircraft. Follow flasher lights to Rwy 26L. Procedure NA when ALS or SFL inop. Circling Cat E NA. Circling NA for Cats A and B northwest of Rwy 8L-22R. Circling NA for Cats C and D north of Rwy 8L-26R.

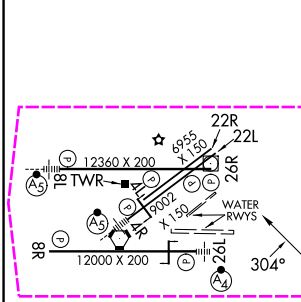
MALSF

MISSED APPROACH: Climb to 600 then climbing left turn to 3000 on HNL VORTAC R-171 to ALANA INT/ HNL 13.9 DME and hold.

D-ATIS	HCF APPROACH	HONOLULU TOWER	GND CON	CLNC DEL
127.9 251.15	118.3 269.0	118.1 257.8 123.9 273.575 (8R/26L)	121.9 348.6	121.4 281.4



ELEV 13	D	TDZE 10
---------	---	---------



Procedure NA for arrivals at SAKKI on V16-21 eastbound.					
VGSI and descent angles not coincident (VGSI Angle 3.00/TCH 75).					
Use I-EPC DME when on the localizer course.					
600 3000 ALANA HNL R-171					
YUYXE HEFTL ONODE SECIL I-EPC 2.2 4.4 5.6 10.5					
2.2 NM 1.3 NM 4.9 NM					
CATEGORY	A	B	C	D	E
S-LDA 26L	600-2 590 (600-2)				
CIRCLING	680-2¼ 667 (700-2¼)	760-2¼ 747 (800-2¼)	820-2¼ 807 (900-2¼)	1400-3 1387 (1400-3)	NA

HONOLULU, HAWAII
Amdt 6A 25FEB21

21°19'N-157°55'W

DANIEL K INOUE INTL (HNL) (PHNL)
LDA RWY 26L

PAC, 07 AUG 2025 to 02 OCT 2025

PAC, 07 AUG 2025 to 02 OCT 2025