

HONOLULU, HAWAII

AL-754 (FAA)

25163

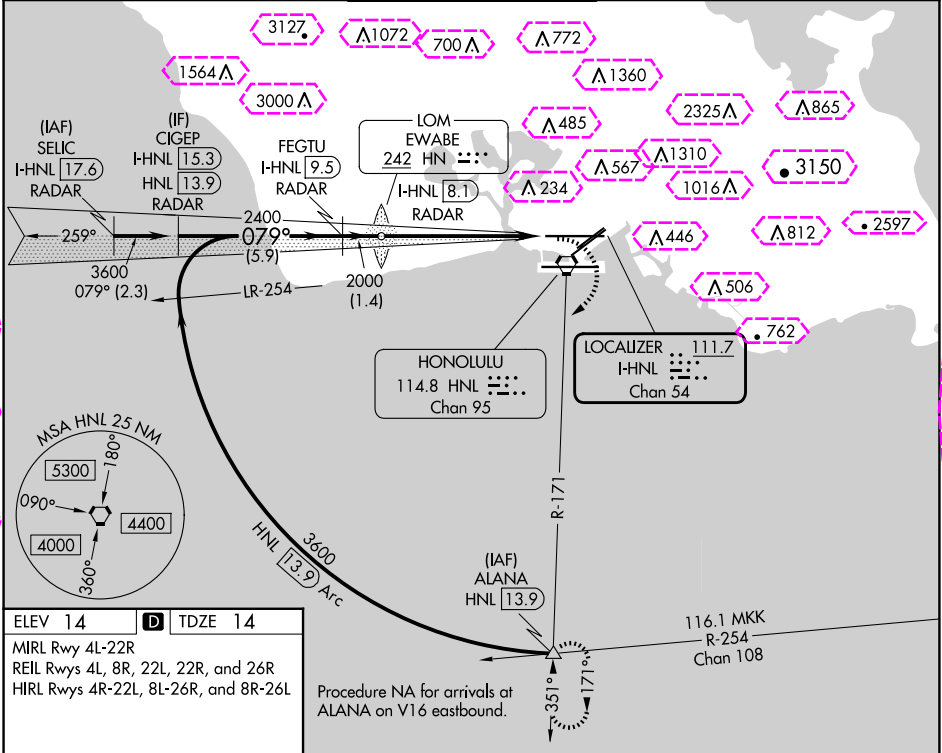
LOC/DME I-HNL	APP CRS	Rwy Ldg
111.7	079°	12312
Chan 54		TDZE 14
		Apt Elev 14

LOC RWY 8L

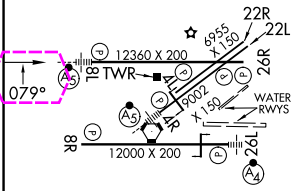
DANIEL K INOUE INTL (HNL) (PHNL)

DME or RADAR required.		MALSR	MISSED APPROACH: Climbing right turn to 5000 on heading 200° and HNL VORTAC R-171 to ALANA INT/HNL 13.9 DME and hold, continue climb-in-hold to 5000.
Circling Rwy 22R NA at night. Circling NA for Cats A and B northwest of Rwy 8L and 22R and for Cats C and D north of Rwy 8L-26R. Circling NA to sea lanes 4W, 8W, 22W and 26W. For inop ALS, increase S-LOC 8L Cats C and D visibility to 1½ SM.		AS	

D-ATIS	HCF APPROACH	HONOLULU TOWER	GND CON	CLNC DEL
127.9 251.15	118.3 269.0	118.1 257.8 123.9 273.575 (Rwy 8R/26L)	121.9 348.6	121.4 281.4



ELEV 14	TDZE 14
MIRL Rwy 4L-22R	
REIL Rwy 4L, 8R, 22L, 22R, and 26R	
HIRL Rwy 4R-22L, 8L-26R, and 8R-26L	



CIGEP I-HNL 15.3 RADAR		VGSi and descent angles not coincident (VGSi Angle 3.00/TCH 73).		5000	HNL R-171	ALANA
FEGTU I-HNL 9.5 RADAR		EWABE LOM I-HNL 8.1 RADAR		hdg 200°		
3600 079°		2400		Use I-HNL DME when on the localizer course.		
2000		3.08° TCH 56		I-HNL 3.4	I-HNL 2.2	
5.9 NM		1.4 NM				
4.7 NM		1.2 NM				
CATEGORY	A	B	C	D		
S-8L	480-½	466 (500-½)	480-1	466 (500-1)		
CIRCLING	680-1	666 (700-1)	820-2¼ 806 (900-2¼)	1280-3 1266 (1300-3)		

FAF to MAP 5.9 NM					
Knots	60	90	120	150	180
Min:Sec	5:54	3:56	2:57	2:22	1:58

HONOLULU, HAWAII

Amtd 2A 20FEB25

DANIEL K INOUE INTL (HNL) (PHNL)

21°19'N-157°55'W

LOC RWY 8L

PAC, 12 JUN 2025 to 07 AUG 2025

PAC, 12 JUN 2025 to 07 AUG 2025

HONOLULU, HAWAII

AL-754 (FAA)

25219

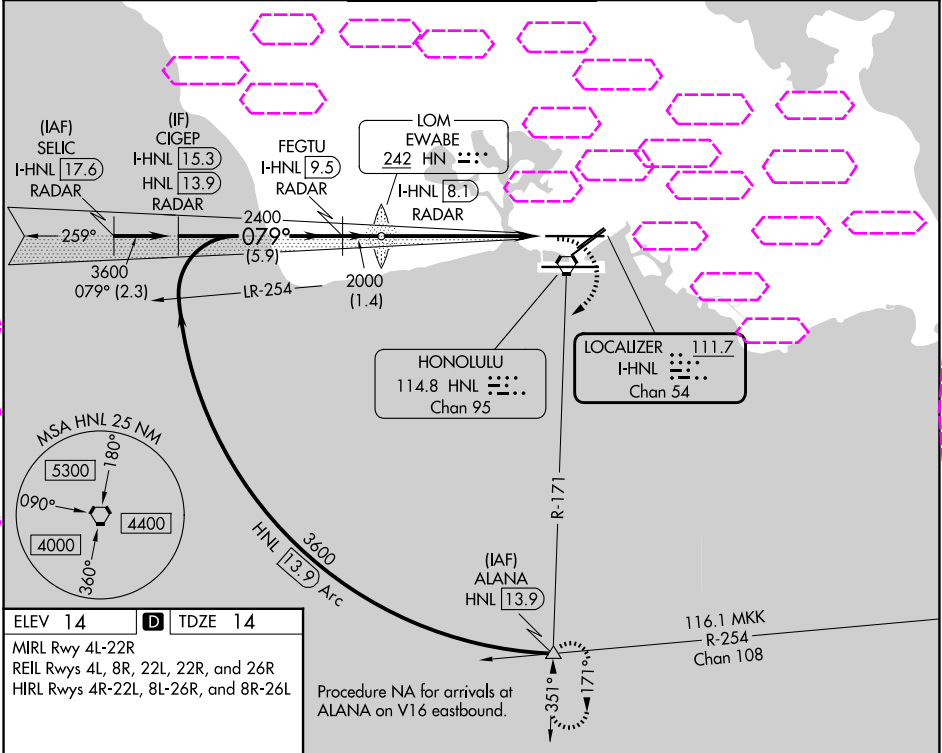
LOC/DME I-HNL	APP CRS	Rwy Ldg
111.7	079°	12245
Chan 54		TDZE 14
		Apt Elev 14

LOC RWY 8L

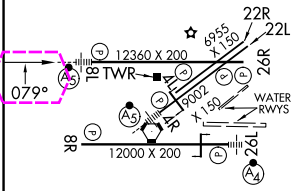
DANIEL K INOUE INTL (HNL) (PHNL)

DME or RADAR required.		MALSR	MISSED APPROACH: Climbing right turn to 5000 on heading 200° and HNL VORTAC R-171 to ALANA INT/HNL 13.9 DME and hold, continue climb-in-hold to 5000.
Circling Rwy 22R NA at night. Circling NA for Cats A and B northwest of Rwys 8L and 22R and for Cats C and D north of Rwy 8L-26R. Circling NA to sea lanes 4W, 8W, 22W and 26W. For inop ALS, increase S-LOC 8L Cats C and D visibility to 1½ SM.		AS	

D-ATIS	HCF APPROACH	HONOLULU TOWER	GND CON	CLNC DEL
127.9 251.15	118.3 269.0	118.1 257.8 123.9 273.575 (8R/26L)	121.9 348.6	121.4 281.4



ELEV 14	TDZE 14
MIRL Rwy 4L-22R	
REIL Rwy 4L, 8R, 22L, 22R, and 26R	
HIRL Rwy 4R-22L, 8L-26R, and 8R-26L	



CIGEP I-HNL 15.3 RADAR		VGSi and descent angles not coincident (VGSi Angle 3.00/TCH 73).		5000	HNL R-171	ALANA
FEGTU I-HNL 9.5 RADAR		EWABE LOM I-HNL 8.1 RADAR		hdg 200°		
3600		2400		Use I-HNL DME when on the localizer course.		
2000		3.08° TCH 56		I-HNL 3.4	I-HNL 2.2	
5.9 NM		1.4 NM				
4.7 NM		1.2 NM				
CATEGORY	A	B	C	D		
S-8L	480-½	466 (500-½)	480-1	466 (500-1)		
CIRCLING	680-1	666 (700-1)	820-2¼ 806 (900-2¼)	1280-3 1266 (1300-3)		

FAF to MAP 5.9 NM					
Knots	60	90	120	150	180
Min:Sec	5:54	3:56	2:57	2:22	1:58

HONOLULU, HAWAII
Amdt 2A 20FEB25

DANIEL K INOUE INTL (HNL) (PHNL)
LOC RWY 8L

21°19'N-157°55'W

PAC. 07 AUG 2025 to 02 OCT 2025

PAC. 07 AUG 2025 to 02 OCT 2025