

LOC/DME I-IUM 110.5 Chan 42	APP CRS 042°	Rwy Ldg 8950 TDZE 8 Apt Elev 13
---	------------------------	--

LOC RWY 4R

DANIEL K INOUE INTL (HNL) (PHNL)

DME required.

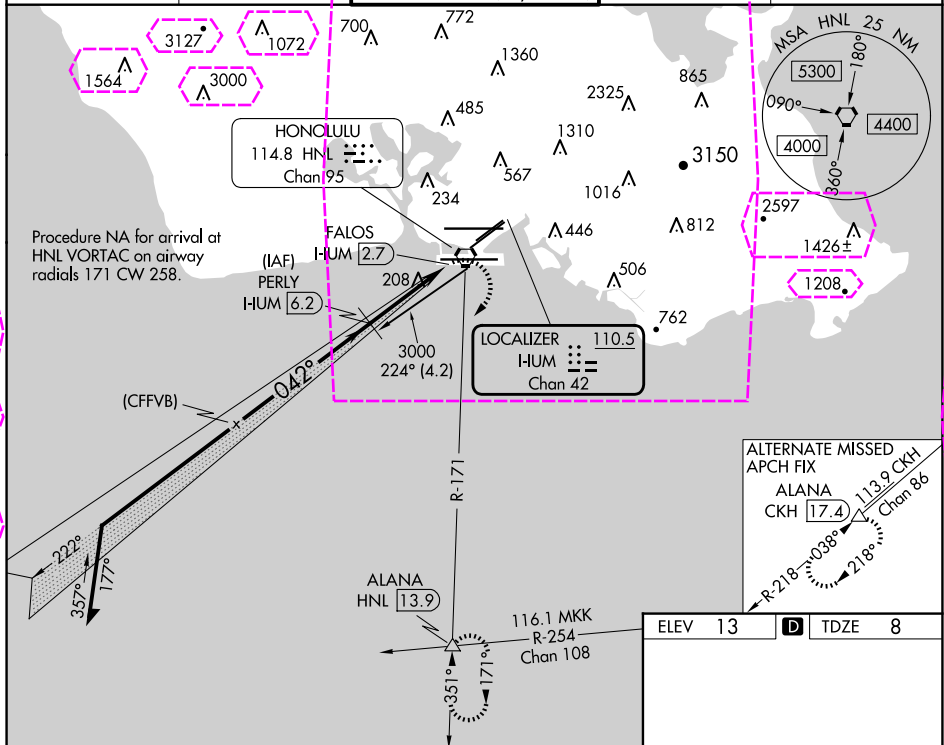
T Circling Rwy 22R NA at night. For inop ALS, increase Cat E visibility to 1% SM. Circling NA for Cats A and B northwest of Rwy 8L and 22R.

A Circling NA for Cats C and D north of Rwy 8L-26R. Circling NA to sea lanes 4W, 8W, 22W, and 26W.



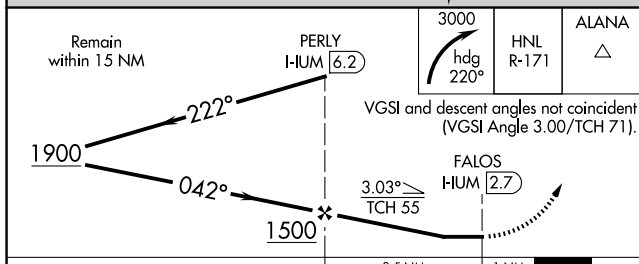
MISSED APPROACH: Climbing right turn to 3000 on heading 220° and HNL VORTAC R-171 to ALANA INT/HNL 13.9 DME and hold.

D-ATIS	HCF APPROACH	HONOLULU TOWER	GND CON	CLNC DEL
127.9 251.15	118.3 269.0	118.1 257.8 123.9 273.575 (Rwy 8R/26L)	121.9 348.6	121.4 281.4

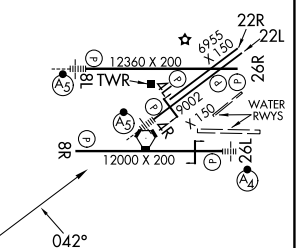


ALTERNATE MISSED
APCH FIX
ALANA
CKH 17.4
113.9 CKH
Chan 8
R-218 038°
218°

ELEV	13	D	TDZE	8
------	----	----------	------	---



CATEGORY			3.5 NM		1 NM		
	A	B	C	D	E		
S-4R	460-¾	452 (500-¾)	460-⅞ 452 (500-⅞)				
CIRCLING	680-1¼ 667 (700-1¼)	760-1¼ 747 (800-1¼)	820-2¼ 807 (900-2¼)	1400-3 1387 (1400-3)	NA		



MIRL Rwy 4L-22R
REIL Rwys 4L, 8R, 22L, 22R, and 26R
HIRL Rwys 4R-22L, 8L-26R, and 8R-26L

HONOLULU, HAWAII

Amdt 1D 25FEB21

DANIEL K INOUE INTL (HNL) (PHNL)

LOC RWY 4R

21°19'N-157°55'W

PAC, 12 JUN 2025 to 07 AUG 2025

PAC, 12 JUN 2025 to 07 AUG 2025

HONOLULU, HAWAII

AL-754 (FAA)

25219

LOC/DME I-HUM 110.5 Chan 42	APP CRS 042°	Rwy Ldg TDZE Apt Elev 8950 8 13
---	------------------------	---

LOC RWY 4R

DANIEL K INOUEY INTL (HNL) (PHNL)

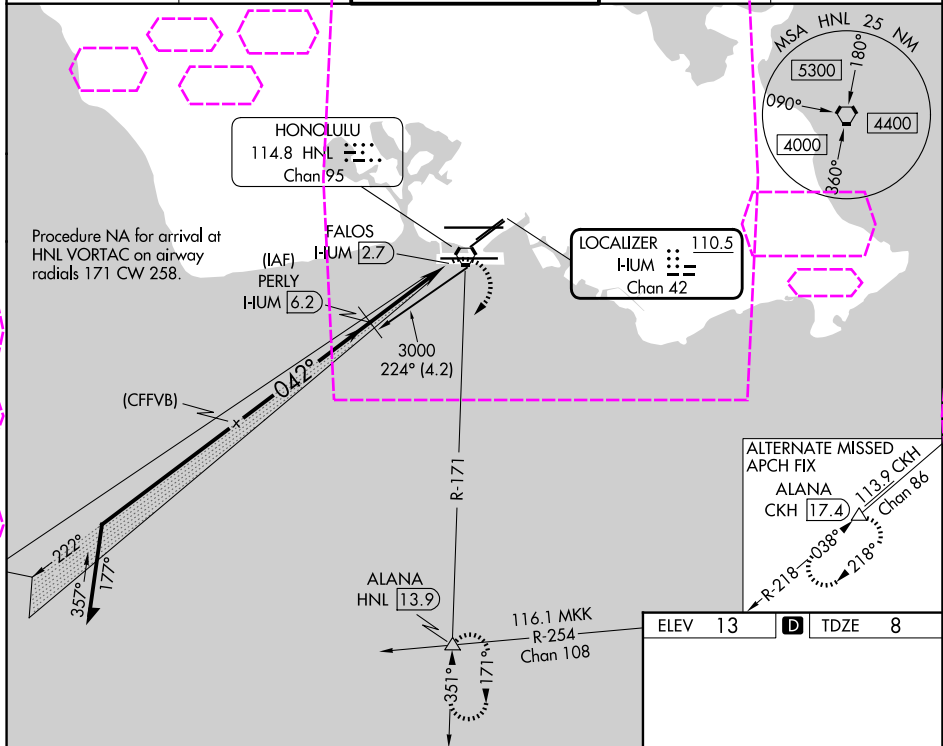
DME required.



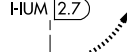
▼ Circling Rwy 22R NA at night. For inop ALS, increase Cat E visibility to 1½ SM. Circling NA for Cats A and B northwest of Rwys 8L and 22R. Circling NA for Cats C and D north of Rwy 8L-26R. Circling NA to sea lanes 4W, 8W, 22W, and 26W.

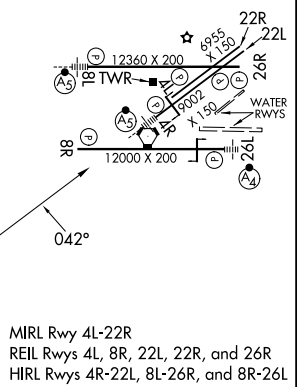


MISSED APPROACH: Climbing right turn to 3000 on heading 220° and HNL VORTAC R-171 to ALANA INT/ HNL 13.9 DME and hold.

D-ATIS 127.9 251.15	HCF APPROACH 118.3 269.0	HONOLULU TOWER 118.1 257.8 123.9 273.575 (8R/26L)	GND CON 121.9 348.6	CLNC DEL 121.4 281.4
-------------------------------	------------------------------------	---	-------------------------------	--------------------------------



Remain within 15 NM		PERLY I-HUM 6.2				HNL R-171		ALANA 			
1900		222°		042°		1500		3.03° 			
				3.5 NM		1 NM					
CATEGORY		A		B		C		D		E	
S-4R		460-¾		452 (500-¾)		460-⅞		452 (500-⅞)			
CIRCLING		680-1¼ 667 (700-1¼)		760-1¼ 747 (800-1¼)		820-2¼ 807 (900-2¼)		1400-3 1387 (1400-3)		NA	



HONOLULU, HAWAII

Amdt 1D 25FEB21

DANIEL K INOUEY INTL (HNL) (PHNL)

21°19'N-157°55'W

LOC RWY 4R

PAC, 07 AUG 2025 to 02 OCT 2025

PAC, 07 AUG 2025 to 02 OCT 2025