

HONOLULU, HAWAII

AL-754 (FAA)


25163

|   |                        |  |
|---|------------------------|--|
| LOC/DME I-HUM<br><b>110.5</b><br>Chan <b>42</b> | APP CRS<br><b>042°</b> | Rwy Ldg <b>8950</b><br>TDZE <b>8</b><br>Apt Elev <b>13</b> |
|---|------------------------|--|

# ILS Z RWY 4R

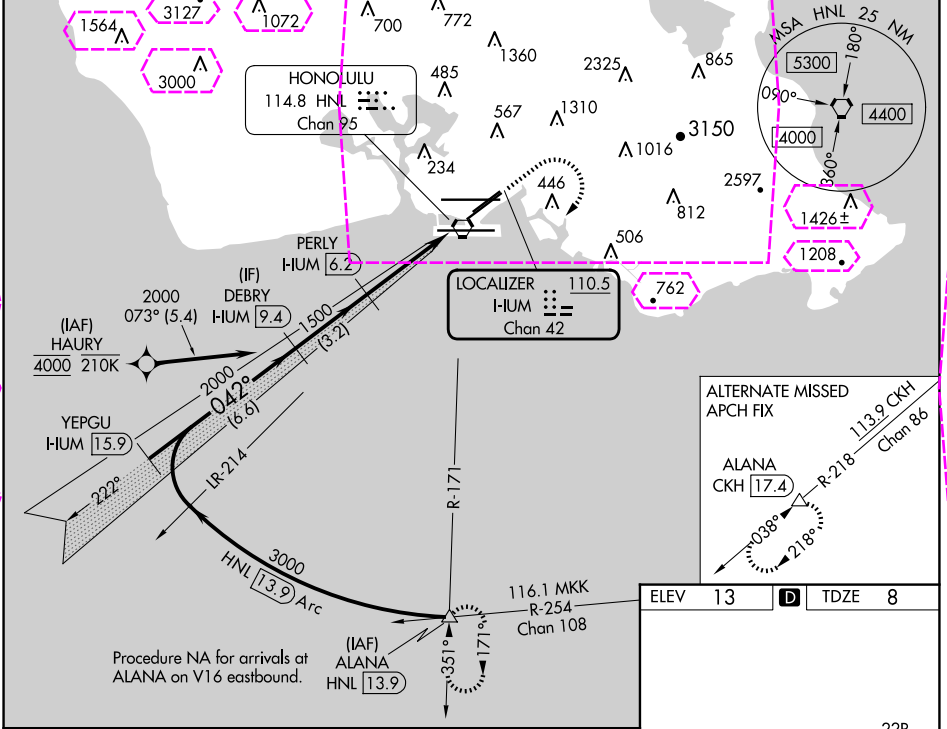
DANIEL K INOUEY INTL (HNL) (PHNL)

From HAURY: RNAV 1-GPS required. DME or RADAR required.  
DME or RADAR required for procedure entry.

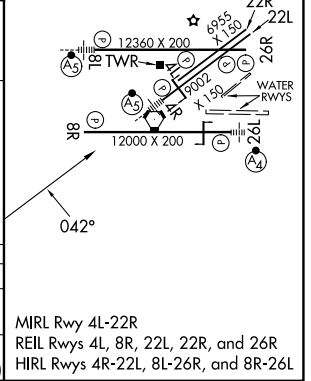
**MALSR**  
  
MISSED APPROACH: Climb to 540, Cat E climb to 780 then climbing right turn to 3000 on heading 220° and on HNL VORTAC R-171 to ALANA INT/HNL VORTAC 13.9 DME and hold. \* Missed approach requires minimum climb of 318 feet per NM to 1820, (if unable to meet climb gradient use S-ILS 4R minimums).

**HAURY** transition NA for Cat E aircraft. For inop ALS, increase S-ILS 4R Cats A-D visibility to ½ SM, increase S-ILS 4R Cat E visibility to 1½ SM.

|                               |                                    |   |                               |                                |
|-------------------------------|------------------------------------|---|-------------------------------|--------------------------------|
| D-ATIS<br><b>127.9 251.15</b> | HCF APPROACH<br><b>118.3 269.0</b> | HONOLULU TOWER<br><b>118.1 257.8</b><br><b>123.9 273.575</b> (Rwy 8R/26L) | GND CON<br><b>121.9 348.6</b> | CLNC DEL<br><b>121.4 281.4</b> |
|-------------------------------|------------------------------------|---|-------------------------------|--------------------------------|



|   |                 |                 |             |       |                        |
|---|-----------------|-----------------|-------------|-------|------------------------|
| VGSi and ILS glidepath not coincident (VGSi Angle 3.00/TCH 71). |                 |                 |             |       |                        |
| YEPGU I-HUM 15.9  | DEBRY I-HUM 9.4 | PERLY I-HUM 6.2 | HNL R-171   | ALANA |                        |
| 3000  | 2000            | 1500            | 540         | 3000  |                        |
| GS 3.00° TCH 55   | 042°            | 1500            | hdg 220°    |       |                        |
| 6.6 NM  | 3.2 NM          | 4.5 NM          |             |       |                        |
| CATEGORY  | A               | B               | C           | D     | E                      |
| S-ILS 4R*   |                 | 258-½           | 250 (300-½) |       | NA                     |
| S-ILS 4R  |                 | 308-½           | 299 (300-½) |       | 566-1½<br>557 (600-1½) |



HONOLULU, HAWAII  
Amdt 2A 08SEP22

DANIEL K INOUEY INTL (HNL) (PHNL)  
ILS Z RWY 4R

21°19'N-157°55'W

PAC, 12 JUN 2025 to 07 AUG 2025

PAC, 12 JUN 2025 to 07 AUG 2025

HONOLULU, HAWAII

AL-754 (FAA)

25219

|   |                        |  |
|---|------------------------|--|
| LOC/DME I-HUM<br><b>110.5</b><br>Chan <b>42</b> | APP CRS<br><b>042°</b> | Rwy Ldg <b>8950</b><br>TDZE <b>8</b><br>Apt Elev <b>13</b> |
|---|------------------------|--|

# ILS Z RWY 4R

DANIEL K INOUEY INTL (HNL) (PHNL)

From HAURY: RNAV 1-GPS required. DME or RADAR required.  
DME or RADAR required for procedure entry.

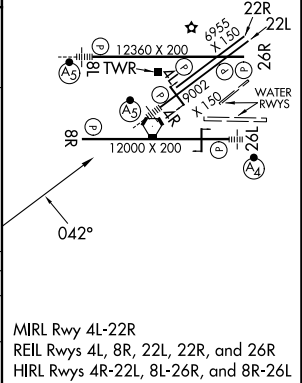
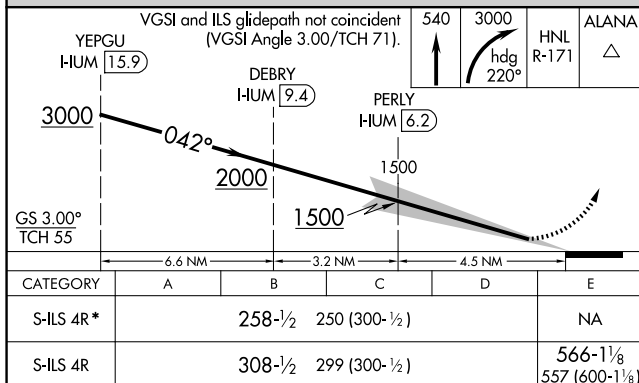
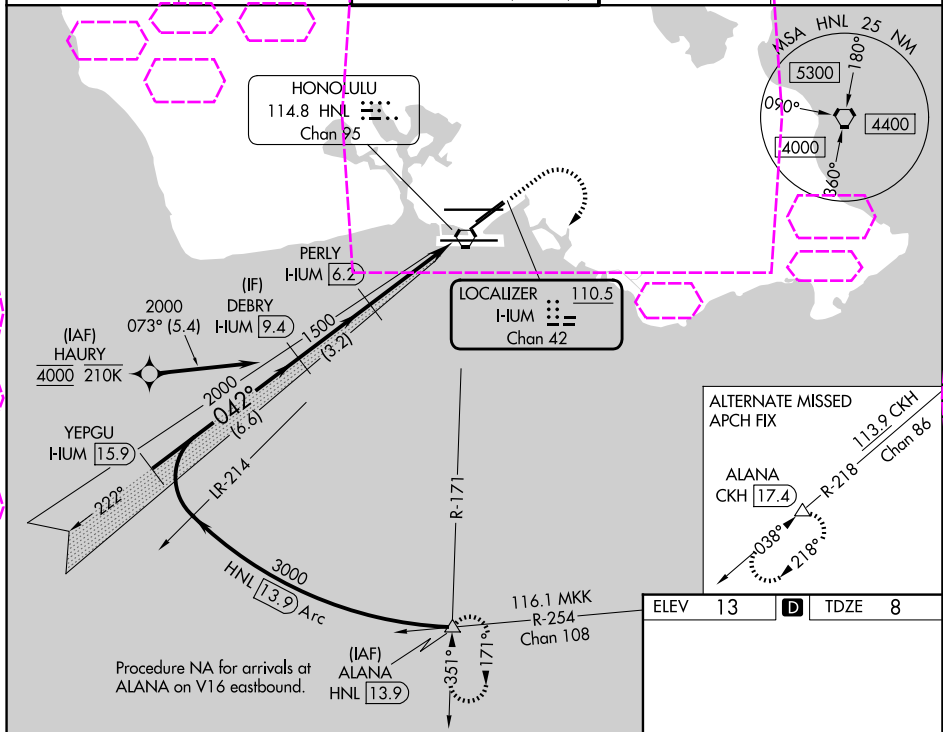
MALSR



MISSED APPROACH: Climb to 540, Cat E climb to 780 then climbing right turn to 3000 on heading 220° and on HNL VORTAC R-171 to ALANA INT/HNL VORTAC 13.9 DME and hold. \* Missed approach requires minimum climb of 318 feet per NM to 1820, (if unable to meet climb gradient use S-ILS 4R minimums).

HAURY transition NA for Cat E aircraft. For inop ALS, increase S-ILS 4R Cats A-D visibility to ½ SM, increase S-ILS 4R Cat E visibility to 1½ SM.

|                               |                                    |   |                               |                                |
|-------------------------------|------------------------------------|---|-------------------------------|--------------------------------|
| D-ATIS<br><b>127.9 251.15</b> | HCF APPROACH<br><b>118.3 269.0</b> | HONOLULU TOWER<br><b>118.1 257.8</b><br><b>123.9 273.575 (8R/26L)</b> | GND CON<br><b>121.9 348.6</b> | CLNC DEL<br><b>121.4 281.4</b> |
|-------------------------------|------------------------------------|---|-------------------------------|--------------------------------|



HONOLULU, HAWAII

Amdt 2A 08SEP22

DANIEL K INOUEY INTL (HNL) (PHNL)

21°19'N-157°55'W

# ILS Z RWY 4R

PAC, 07 AUG 2025 to 02 OCT 2025

PAC, 07 AUG 2025 to 02 OCT 2025