

HONOLULU, HAWAII

AL-754 (FAA)

25163

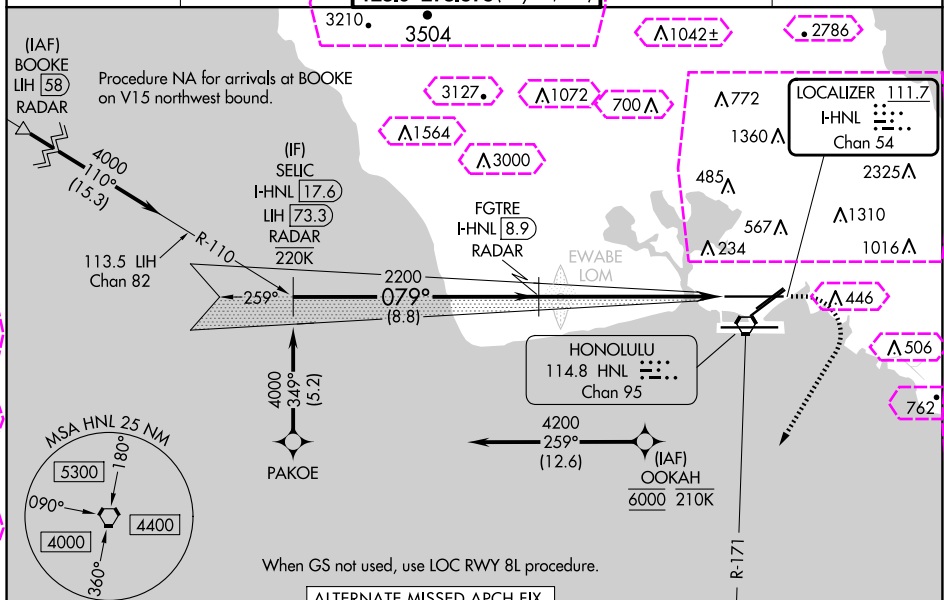
LOC/DME I-HNL	APP CRS	Rwy Ldg TDZE	12312
111.7	079°	13	
Chan 54		Apt Elev	13

ILS RWY 8L

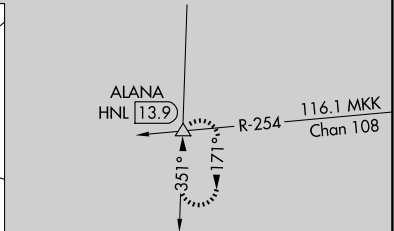
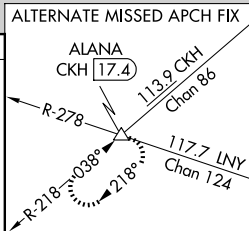
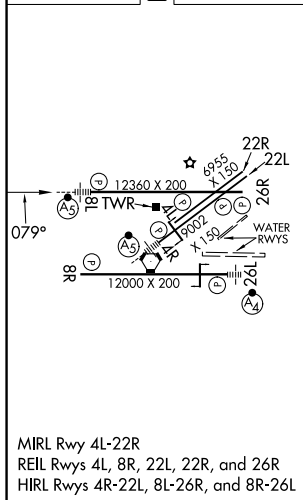
DANIEL K INOUEY INTL (HNL) (PHNL)

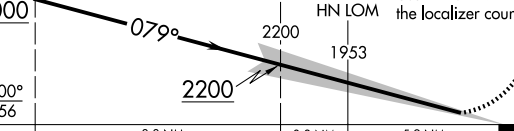
RNP APCH - GPS. From OOKAH.	MAISR	MISSED APPROACH: Climb to 500 then climbing right turn to 5000 on heading 200° and HNL VORTAC R-171 to ALANA INT/HNL 13.9 DME and hold, continue climb-in-hold to 5000.
DME or RADAR required.		
For inop ALS, increase Cat E visibility to ¾ SM. OOKAH transition NA for Cat E aircraft. Cat E restricted to USAF/USN aircraft.		

D-ATIS	HCF APPROACH	HONOLULU TOWER	GND CON	CLNC DEL
127.9 251.15	118.3 269.0	118.1 257.8 123.9 273.575 (Rwy 8R/26L)	121.9 348.6	121.4 281.4



ELEV 13	D	TDZE 13
---------	---	---------



VGSI and ILS glidepath not coincident (VGSI Angle 3.00/TCH 73).			500	5000	ALANA
SELIC I-HNL (17.6) RADAR	FGTRE I-HNL (8.9) RADAR	EWABE HN LOM	↑	hdg 200°	HNL R-171 △
4000	2200	1953	Use I-HNL DME when on the localizer course.		
GS 3.00° TCH 56					
CATEGORY	A	B	C	D	E
S-ILS 8L	213-½ 200 (200-½)				

HONOLULU, HAWAII

Amdt 25A 05SEP24

DANIEL K INOUEY INTL (HNL) (PHNL)

21°19'N-157°55'W

ILS RWY 8L

PAC: 12 JUN 2025 to 07 AUG 2025

PAC: 12 JUN 2025 to 07 AUG 2025

HONOLULU, HAWAII

AL-754 (FAA)

25219

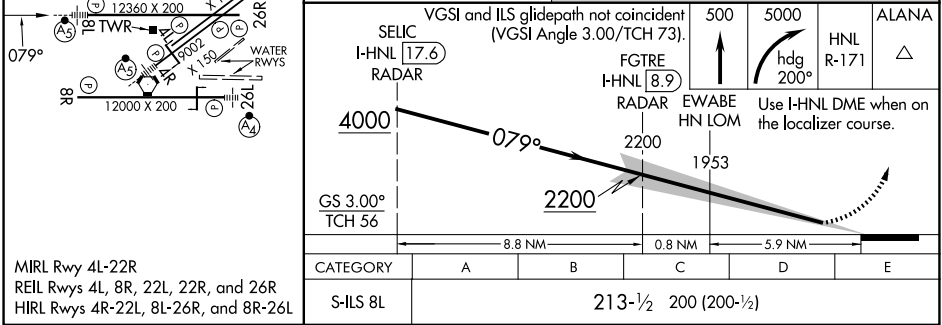
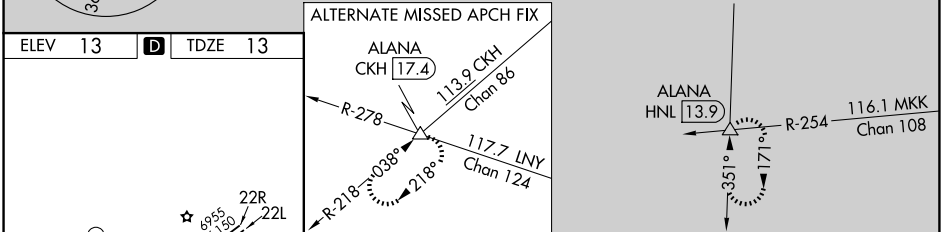
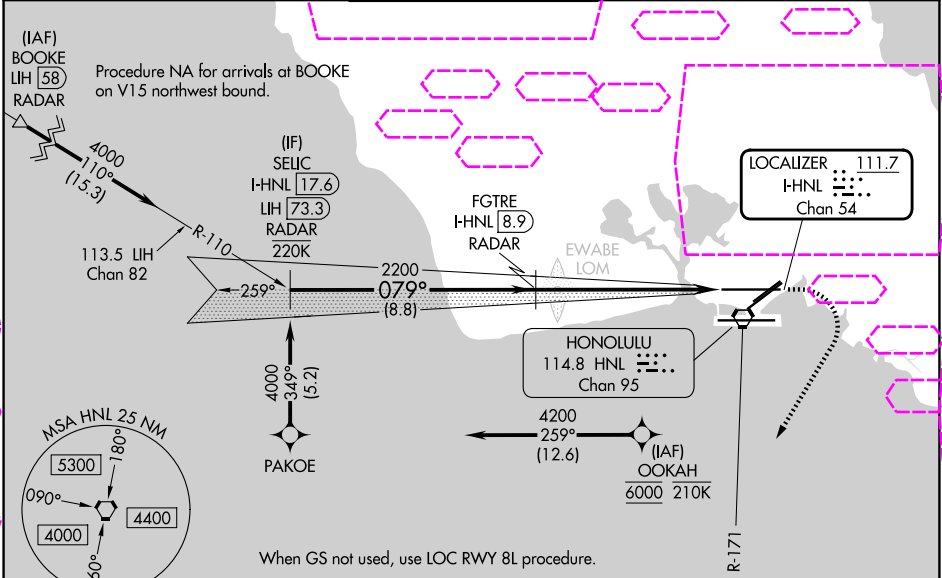
LOC/DME I-HNL	APP CRS	Rwy Ldg
111.7	079°	12245
Chan 54		TDZE 13
		Apt Elev 13

ILS RWY 8L

DANIEL K INOUE INTL (HNL) (PHNL)

RNP APCH - GPS. From OOKAH.	MAISR	MISSED APPROACH: Climb to 500 then climbing right turn to 5000 on heading 200° and HNL VORTAC R-171 to ALANA INT/HNL 13.9 DME and hold, continue climb-in-hold to 5000.
DME or RADAR required.		
For inop ALS, increase Cat E visibility to 3/4 SM. OOKAH transition NA for Cat E aircraft. Cat E restricted to USAF/USN aircraft.		

D-ATIS	HCF APPROACH	HONOLULU TOWER	GND CON	CLNC DEL
127.9 251.15	118.3 269.0	118.1 257.8 123.9 273.575 (8R/26L)	121.9 348.6	121.4 281.4



HONOLULU, HAWAII
Amdt 25A 05SEP24

DANIEL K INOUE INTL (HNL) (PHNL)

21°19'N-157°55'W

ILS RWY 8L

PAC, 07 AUG 2025 to 02 OCT 2025

PAC, 07 AUG 2025 to 02 OCT 2025