

(JPOOL7, TTT) 24305

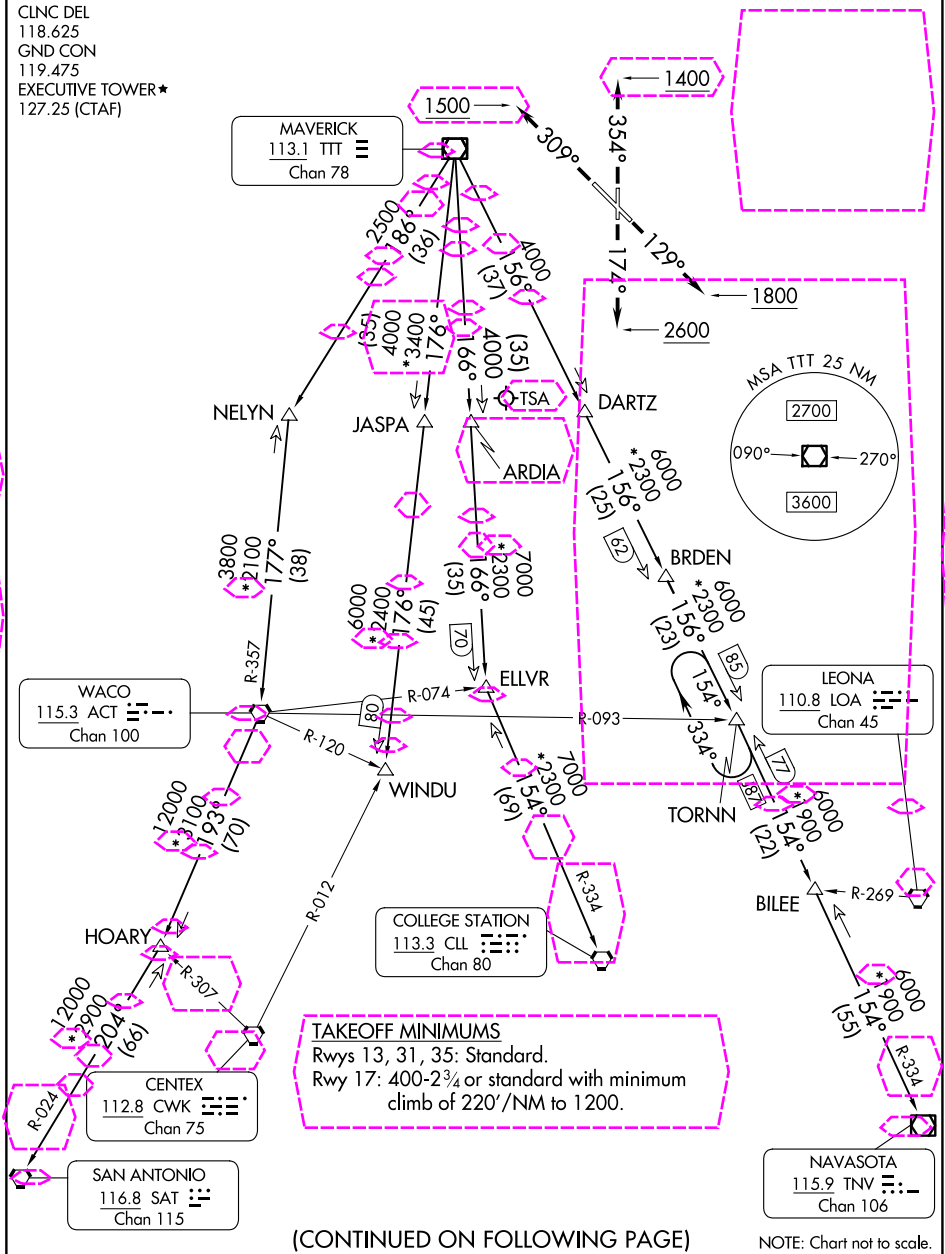
AL-742 (FAA)

DALLAS EXEC (RBD)
DALLAS, TEXAS

JOE POOL SEVEN DEPARTURE

LONE STAR DEP CON
125.2 343.65
ATIS
126.35
CLNC DEL
118.625
GND CON
119.475
EXECUTIVE TOWER ★
127.25 (CTAF)

RADAR and DME required.

**TOP ALTITUDE:
ASSIGNED BY ATC**

(CONTINUED ON FOLLOWING PAGE)

NOTE: Chart not to scale.

JOE POOL SEVEN DEPARTURE

(JPOOL7, TTT) 25JAN24

DALLAS, TEXAS
DALLAS EXEC (RBD)

(JPOOL8, TTT) 25219

AL-742 (FAA)

DALLAS EXEC (RBD)
DALLAS, TEXAS

JOE POOL EIGHT DEPARTURE

LONE STAR DEP CON
125.2 343.65
ATIS
126.35
CLNC DEL
118.625
GND CON
119.475
EXECUTIVE TOWER★
127.25 (CTAF)

RADAR and DME required.

TOP ALTITUDE:
ASSIGNED BY ATC

MSA TTT 25 NM

2700

090°

270°

3600

MAVERICK
113.1 TTT
Chan 78

NELYN

JASPA

DARTZ

ARDIA

BRDEN

ELLVR

WINDU

TORN

BILEE

HOARY

COLLEGE STATION
113.3 CLL
Chan 80

CENTEX
112.8 CWK
Chan 75

SAN ANTONIO
116.8 SAT
Chan 115

NAVASOTA
115.9 TNV
Chan 106

TAKEOFF MINIMUMS

Rwys 13, 31, 35: Standard.

Rwy 17: 400-2¾ or standard with minimum
climb of 220'/NM to 1200.

(CONTINUED ON FOLLOWING PAGE)

NOTE: Chart not to scale.

JOE POOL EIGHT DEPARTURE

(JPOOL8, TTT) 07AUG25

DALLAS, TEXAS
DALLAS EXEC (RBD)

SC-2, 07 AUG 2025 to 04 SEP 2025

SC-2, 07 AUG 2025 to 04 SEP 2025