

NORWOOD, MASSACHUSETTS

AL-725 (FAA)

23334

WAAS CH 86400 W35A	APP CRS 350°	Rwy Idg TDZE Apt Elev	4007 49 49
----------------------------------------	------------------------	-----------------------------	---------------------------------------

RNAV (GPS) RWY 35

NORWOOD MEML (OWD)

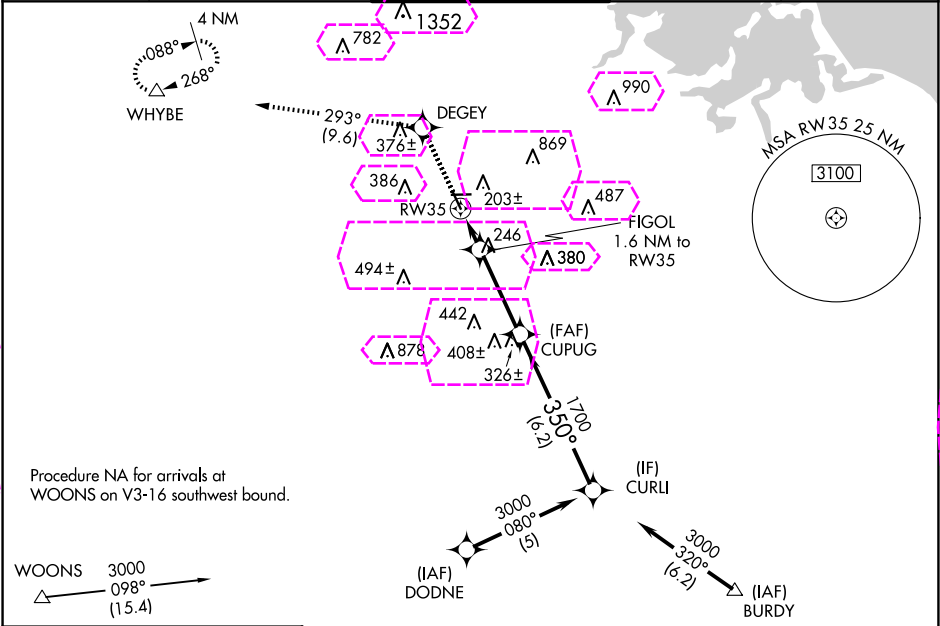
RNP APCH.

⚠ Rwy 35 helicopter visibility reduction below $\frac{3}{4}$ SM NA. For inop ALS, increase LPV all Cats visibility to $\frac{7}{8}$ SM. For uncompensated Baro-VNAV systems, LNAV/VNAV NA below -15°C or above 48°C. Circling NA at night.



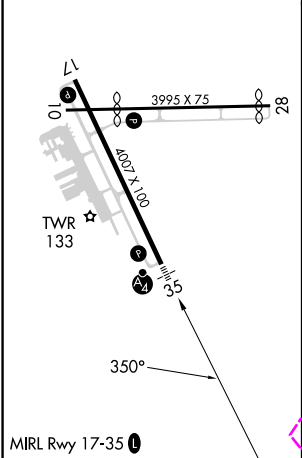
MISSED APPROACH: Climb to 3000 direct DEGEY and on track 293° to WHYBE and hold, continue climb-in-hold to 3000.

ATIS 119.95	BOSTON APP CON 124.1 263.1	NORWOOD TOWER ★ 126.0 (CTAF) 0	GND CON 121.8	CLNC DEL 121.8
-----------------------	--------------------------------------	------------------------------------------	-------------------------	--------------------------



Procedure NA for arrivals at WOONS on V3-16 southwest bound.

ELEV 49	D	TDZE 49
----------------	----------	----------------



3000	DEGEY	tr 293°	WHYBE	
*INAV only				
FIGOL 1.6 NM to RW35				
CUPUG 1700				
CURLI 3000				
GP 3.00° TCH 40				
1.6 3.4 NM 6.2 NM				
CATEGORY	A	B	C	D
LPV DA	344- $\frac{3}{4}$ 295 (300- $\frac{3}{4}$)			
INAV/VNAV DA	594-1 $\frac{1}{8}$ 545 (600-1 $\frac{1}{8}$)			
LNAV MDA	580- $\frac{3}{4}$	531 (600- $\frac{3}{4}$)	580-1 $\frac{1}{4}$	531 (600-1 $\frac{1}{4}$)
CIRCLING	600-1 551 (600-1)	700-1 651 (700-1)	1220-3	1171 (1200-3)

NE-1, 10 JUL 2025 to 07 AUG 2025

NE-1, 10 JUL 2025 to 07 AUG 2025

NORWOOD, MASSACHUSETTS

AL-725 (FAA)

25219

WAAS CH 86400 W35A	APP CRS 350°	Rwy Ldg TDZE Apt Elev	4007 49 49
----------------------------------------	------------------------	-----------------------------	---------------------------------------

RNAV (GPS) RWY 35

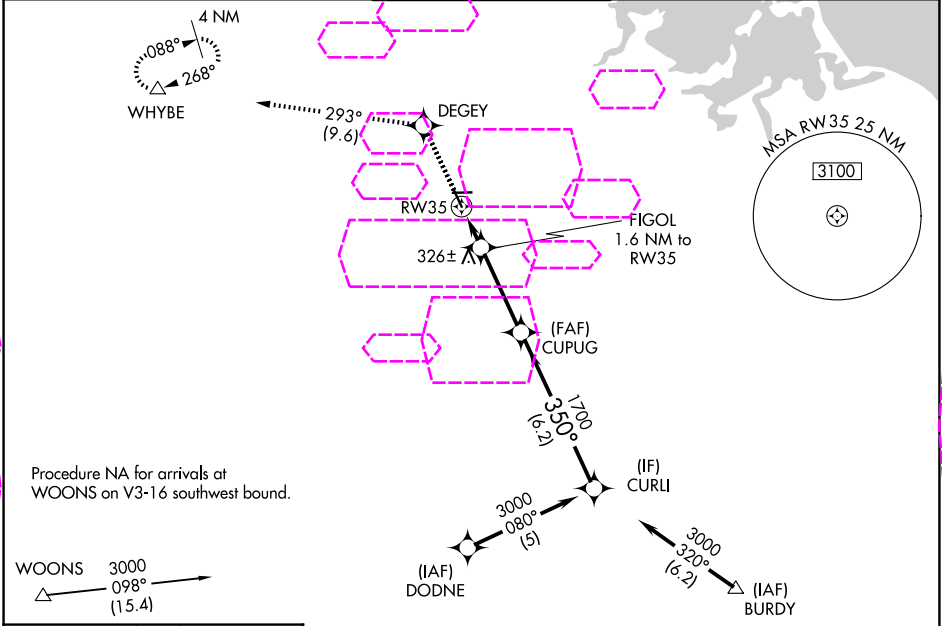
NORWOOD MEML (OWD)

RNP APCH.

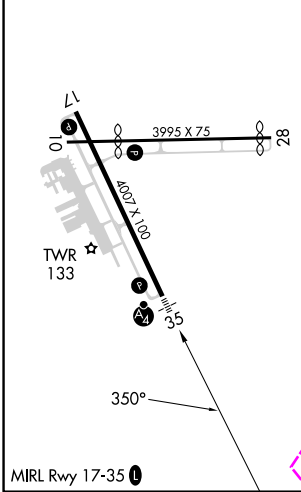
⚠ Rwy 35 helicopter visibility reduction below $\frac{3}{4}$ SM NA. For inop ALS, increase LPV all Cats visibility to $\frac{7}{8}$ SM. For uncompensated Baro-VNAV systems, LNAV/VNAV NA below -15°C or above 48°C. Circling NA at night.

MALSF MISSED APPROACH: Climb to 3000 direct DEGEY and on track 293° to WHYBE and hold, continue climb-in-hold to 3000.

ATIS 119.95	BOSTON APP CON 124.1 263.1	NORWOOD TOWER ★ 126.0 (CTAF) 0	GND CON 121.8	CLNC DEL 121.8
-----------------------	--------------------------------------	------------------------------------------	-------------------------	--------------------------



ELEV 49	D	TDZE 49
----------------	----------	----------------



3000	DEGEY	tr 293°	WHYBE	
* LNAV only				
FIGOL 1.6 NM to RW35				
CUPUG 1700				
CURLI 3000				
GP 3.00° TCH 40				
1.6 3.4 NM 6.2 NM				
CATEGORY	A	B	C	D
LPV DA	344- $\frac{3}{4}$ 295 (300- $\frac{3}{4}$)			
LNNAV/VNAV DA	594-1 $\frac{1}{8}$ 545 (600-1 $\frac{1}{8}$)			
LNNAV MDA	580- $\frac{3}{4}$	531 (600- $\frac{3}{4}$)	580-1 $\frac{1}{4}$	531 (600-1 $\frac{1}{4}$)
CIRCLING	600-1 551 (600-1)	700-1 651 (700-1)	1220-3	1171 (1200-3)

NORWOOD, MASSACHUSETTS
Amdt 1E 31DEC20

42°11'N-71°10'W

NORWOOD MEML (OWD) RNAV (GPS) RWY 35

NE-1, 07 AUG 2025 to 04 SEP 2025

NE-1, 07 AUG 2025 to 04 SEP 2025