

NORWOOD, MASSACHUSETTS

AL-725 (FAA)

23334

LOC/DME I-OWD	APP CRS	Rwy Idg	4007
108.3	350°	TDZE	49
Chan 20		App Elev	49

LOC RWY 35

NORWOOD MEML (OWD)

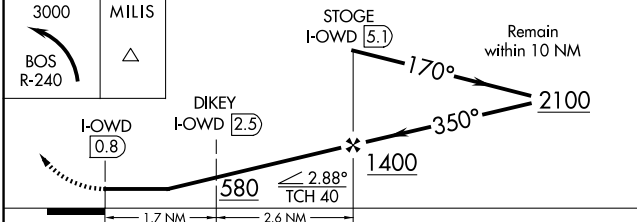
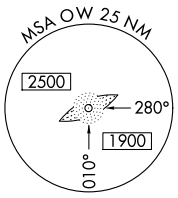
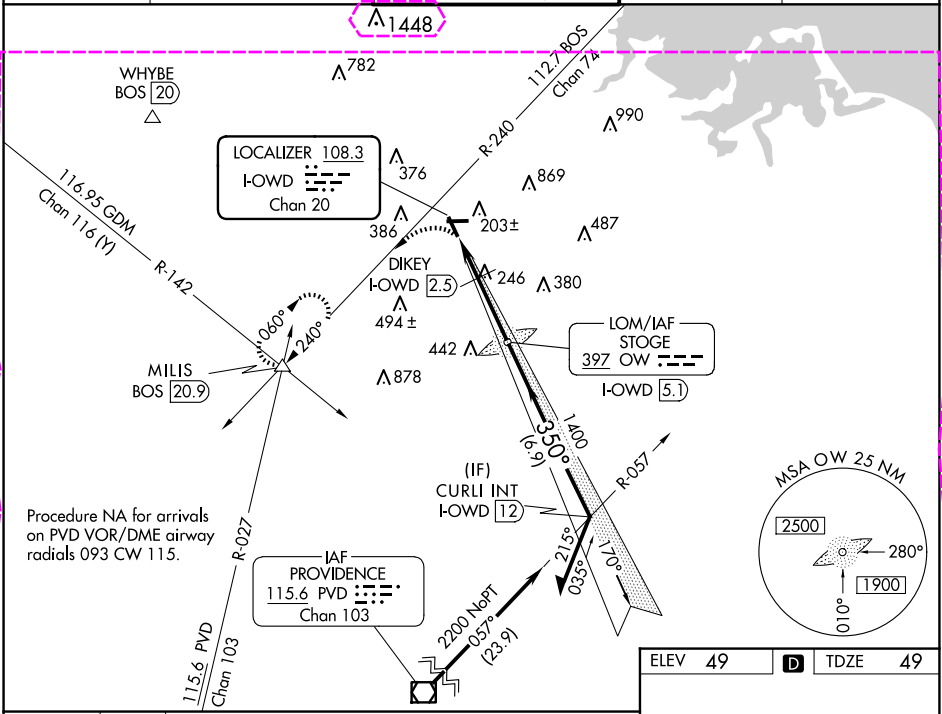
ADF or DME required.

⚠️ Helicopter visibility reduction below ¼ SM NA. DIKEY fix minimums: For inop ALS, increase S-35 Cat C/D visibility to 1¾ SM. Circling NA at night.

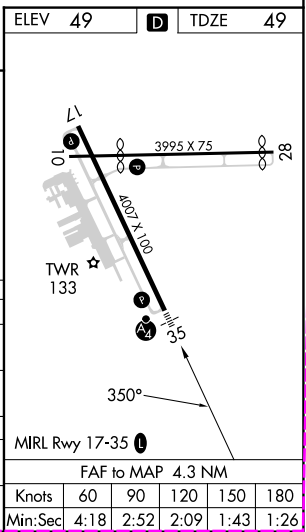
MALSF

MISSED APPROACH: Climbing left turn to 3000 and BOS VOR/DME R-240 to MILIS INT/20.9 DME and hold, continue climb-in-hold to 3000.

ATIS	BOSTON APP CON	NORWOOD TOWER ★	GND CON	CLNC DEL
119.95	124.1 263.1	126.0 (CTAF) 0	121.8	121.8



CATEGORY	A	B	C	D
S-35	580-¾	531 (600-¾)	580-1¼	531 (600-1¼)
CIRCLING	600-1 551 (600-1)	700-1 651 (700-1)	1220-3	1171 (1200-3)
DIKEY FIX MINIMUMS				
S-35	500-¾	451 (500-¾)	500-1	451 (500-1)
CIRCLING	600-1 551 (600-1)	700-1 651 (700-1)	1220-3	1171 (1200-3)



NORWOOD, MASSACHUSETTS

Amdt 10F 31DEC20

42°11'N-71°10'W

NORWOOD MEML (OWD)

LOC RWY 35

NORWOOD, MASSACHUSETTS

AL-725 (FAA)

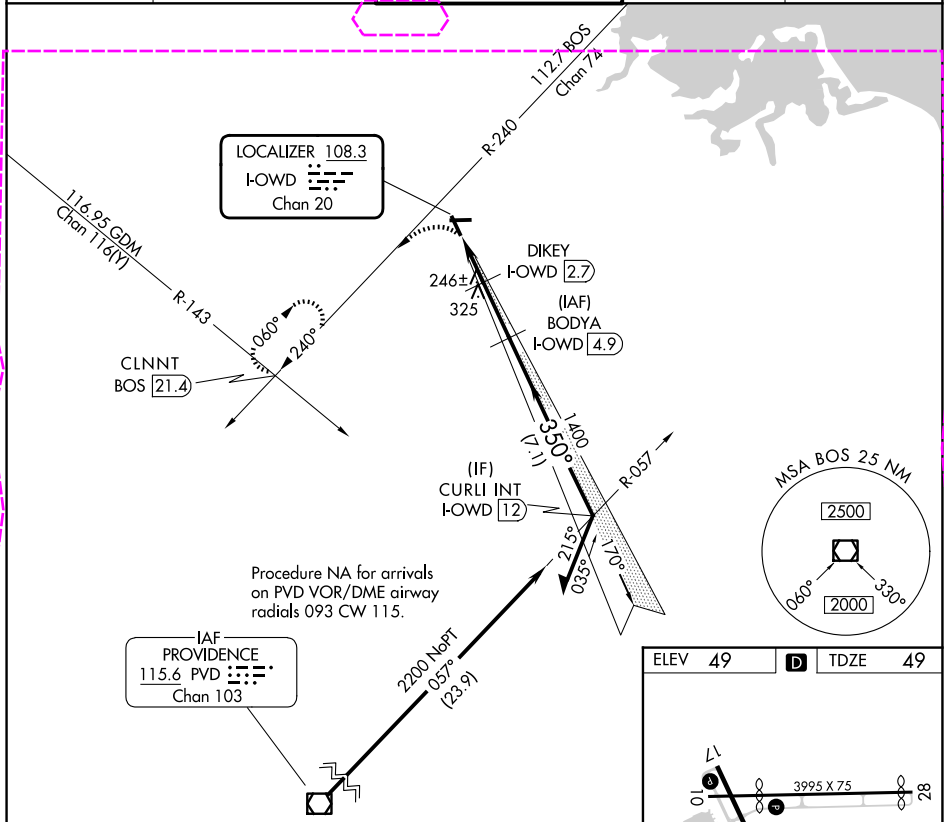
25219

LOC/DME I-OWD	APP CRS	Rwy Ldg	4007
108.3	350°	TDZE	49
Chan 20		App Elev	49

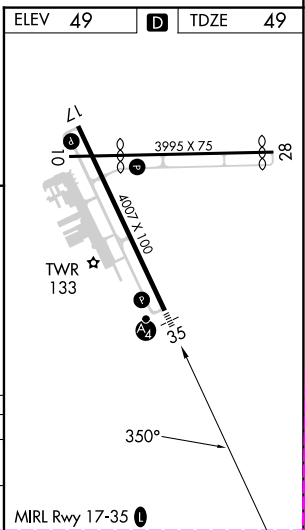
LOC RWY 35
NORWOOD MEML (OWD)

DME required.	MALSF	MISSED APPROACH: Climbing left turn to 2000 on heading 200 and on BOS VOR/DME R-240 to CLNNT INT/ BOS VOR/DME 21.4 DME and hold.
Helicopter visibility reduction below ¾ SM NA. Circling NA at night. For inop ALS, increase S-35 Cat C/D visibility to 1¾ SM.		

ATIS 119.95	BOSTON APP CON 124.1 263.1	NORWOOD TOWER ★ 126.0 (CTAF) 0	GND CON 121.8	CLNC DEL 121.8
----------------	-------------------------------	-----------------------------------	------------------	-------------------



2000 hdg 200	BOS R-240	CLNNT INT	BODYA I-OWD 4.9	Remain within 10 NM
		DIKEY I-OWD 2.7	2100	170°
		I-OWD 0.8	I-OWD 2.1	350°
		700	1400	
		1.3 NM	0.6 NM	2.2 NM
		≤ 3.00°	TCH 40	
CATEGORY	A	B	C	D
S-LOC 35	500-¾	451 (500-¾)	500-1	451 (500-1)
CIRCLING	600-1 551 (600-1)	700-1 651 (700-1)	1220-3	1171 (1200-3)



NORWOOD, MASSACHUSETTS

Amdt 11 07AUG25

42°11'N-71°10'W

NORWOOD MEML (OWD)
LOC RWY 35

NE-1, 07 AUG 2025 to 04 SEP 2025

NE-1, 07 AUG 2025 to 04 SEP 2025