

LONDON, KENTUCKY

AL-720 (FAA)

25163

VOR/DME LOZ	APP CRS	Rwy Ldg	5000
116.55	025°	TDZE	1212
Chan 112 (Y)		Apt Elev	1212

VOR RWY 6

LONDON/CORBIN/MAGEE (LOZ)

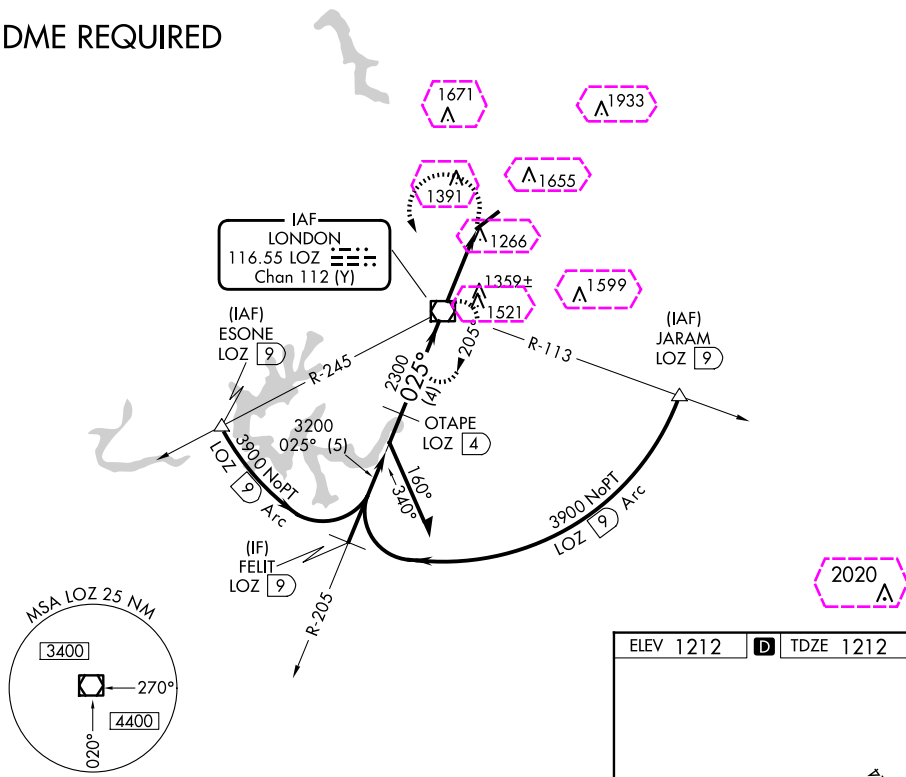


When local altimeter setting not received, use Somerset altimeter setting: increase all MDAs 100 feet and S-6 Cat C/D and Circling Cat C/D visibility ¼ SM. Night landing: Rwy 6 NA.

MISSED APPROACH: Climbing left turn to 4000 direct LOZ VOR/DME and hold, continue climb-in-hold to 4000.

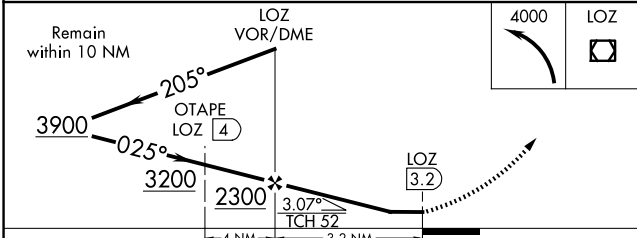
ASOS 119.075	INDIANAPOLIS CENTER 124.625 371.925	UNICOM 123.0 (CTAF) 0
-----------------	--	--------------------------

DME REQUIRED



SE-1, 10 JUL 2025 to 07 AUG 2025

SE-1, 10 JUL 2025 to 07 AUG 2025



ELEV 1212	TDZE 1212
MRL Rwy 6-24 0 REIL Rwy 6 and 24 0	
FAF to MAP 3.2 NM	
Knots	60 90 120 150 180
Min:Seq	3:12 2:08 1:36 1:17 1:04

CATEGORY	A	B	C	D
S-6	1620-1 408 (500-1)		1620-1¼ 408 (500-1¼)	
CIRCLING	1780-1 568 (600-1)	2040-1¼ 828 (900-1¼)	2040-2½ 828 (900-2½)	2040-2¾ 828 (900-2¾)

LONDON, KENTUCKY
Amdt 13C 20MAY21

37°05'N-84°05'W

LONDON/CORBIN/MAGEE (LOZ)

VOR RWY 6

LONDON, KENTUCKY

AL-720 (FAA)

25219

VOR/DME LOZ	APP CRS	Rwy Ldg	5000
116.55	025°	TDZE	1212
Chan 112 (Y)		Apt Elev	1212

VOR RWY 6

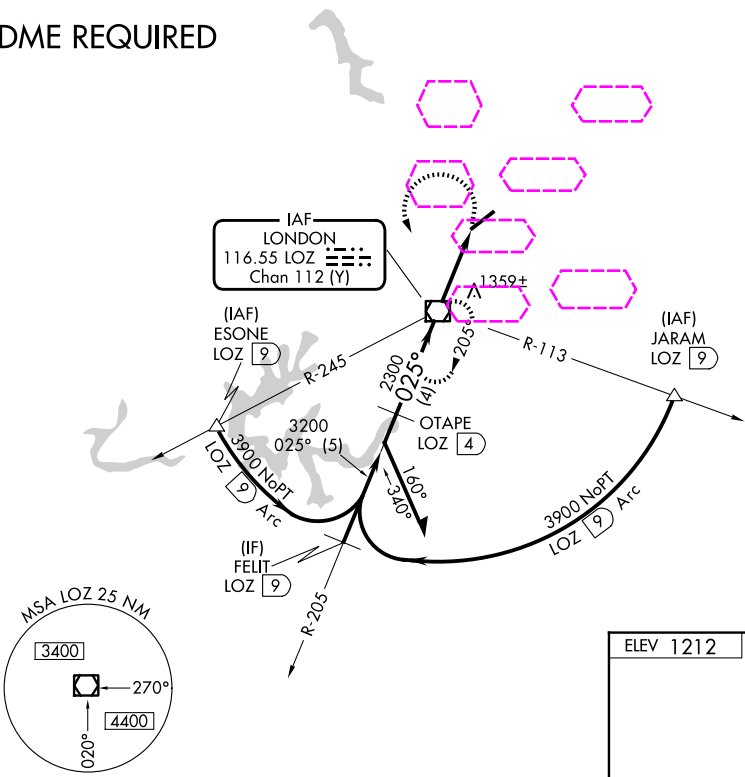
LONDON/CORBIN/MAGEE (LOZ)

When local altimeter setting not received, use Somerset altimeter setting: increase all MDAs 100 feet and S-6 Cat C/D and Circling Cat C/D visibility ¼ SM. Night landing: Rwy 6 NA.

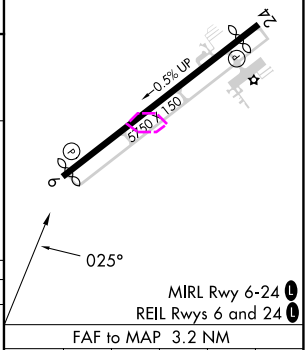
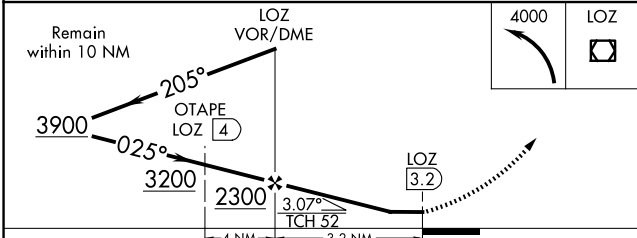
MISSED APPROACH: Climbing left turn to 4000 direct LOZ VOR/DME and hold, continue climb-in-hold to 4000.

ASOS 119.075	INDIANAPOLIS CENTER 124.625 371.925	UNICOM 123.0 (CTAF) 0
-----------------	--	--------------------------

DME REQUIRED



ELEV 1212	TDZE 1212
-----------	-----------



CATEGORY	A	B	C	D	Knots	60	90	120	150	180
S-6	1620-1	408 (500-1)	1620-1¼	408 (500-1¼)	Min:Seq	3:12	2:08	1:36	1:17	1:04
CIRCLING	1780-1 568 (600-1)	2040-1¼ 828 (900-1¼)	2040-2½ 828 (900-2½)	2040-2¾ 828 (900-2¾)						

LONDON, KENTUCKY
Amdt 13C 20MAY21

37°05'N-84°05'W

LONDON/CORBIN/MAGEE (LOZ)

VOR RWY 6

SE-1, 07 AUG 2025 to 04 SEP 2025

SE-1, 07 AUG 2025 to 04 SEP 2025