

LONDON, KENTUCKY

AL-720 (FAA)

25163

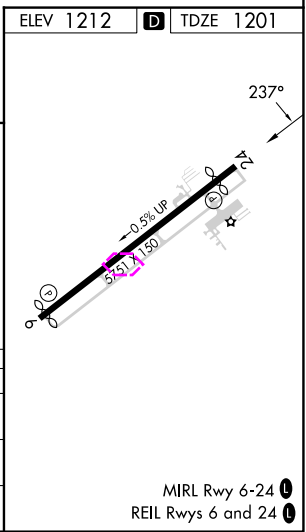
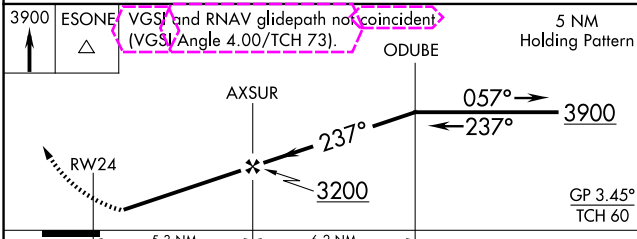
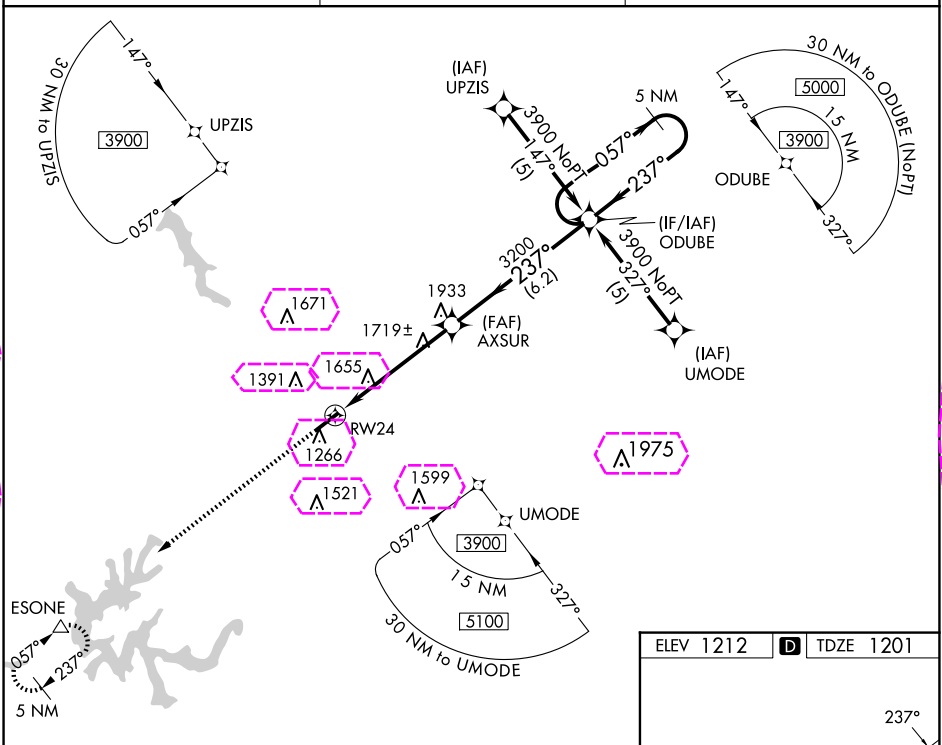
WAAS CH 78108 W24A	APP CRS 237°	Rwy Ldg 5200 TDZE 1201 Apt Elev 1212
--	------------------------	---

RNAV (GPS) RWY 24

LONDON/CORBIN/MAGEE (LOZ)

RNP APCH. ▼ Visibility reduction by helicopters NA. When local altimeter setting not received, use ▲ Somerset altimeter setting: increase LPV DA to 1610 feet and visibility all Cats ¼ SM; increase all MDAs 100 feet and LNAV Cats C/D and Circling Cats A/C/D visibility ½ SM.	MISSED APPROACH: Climb to 3900 direct ESONE and hold.
--	---

ASOS 119.075	INDIANAPOLIS CENTER 124.625 371.925	UNICOM 123.0 (CTAF) 0
------------------------	---	---------------------------------



CATEGORY	A	B	C	D
LPV DA	1510-1	309 (300-1)		NA
LNAV MDA	1980-1 779 (800-1)	1980-1¼ 779 (800-1¼)	1980-2¼ 779 (800-2¼)	1980-2½ 779 (800-2½)
CIRCLING	1980-1 768 (800-1)	2040-1¼ 828 (900-1¼)	2040-2½ 828 (900-2½)	2040-2¾ 828 (900-2¾)

LONDON, KENTUCKY
Amdt 1A 20MAY21

37°05'N-84°05'W

LONDON/CORBIN/MAGEE (LOZ)
RNAV (GPS) RWY 24

SE-1, 10 JUL 2025 to 07 AUG 2025

SE-1, 10 JUL 2025 to 07 AUG 2025

MIRL Rwy 6-24 0
REIL Rws 6 and 24 0

LONDON/CORBIN/MAGEE (LOZ)

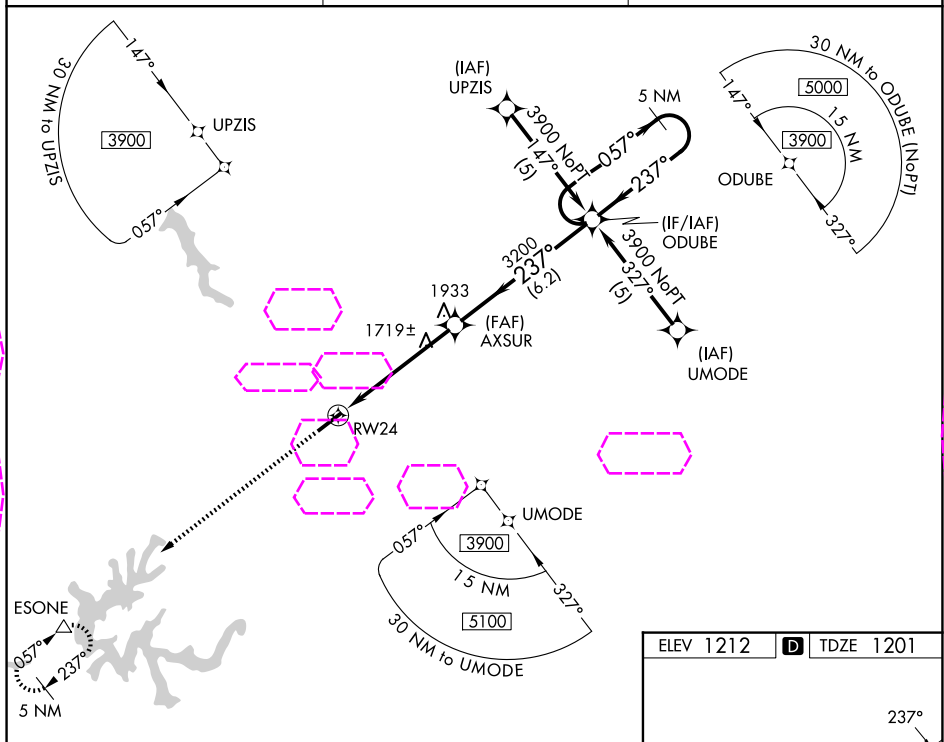
WAAS CH 78108 W24A	APP CRS 237°	Rwy Ldg 5200 TDZE 1201 Apt Elev 1212
--	------------------------	---

RNP APCH.

- A** Visibility reduction by helicopters NA. When local altimeter setting not received, use Somerset altimeter setting: increase LPV DA to 1610 feet and visibility all Cats $\frac{1}{4}$ SM; increase all MDAs 100 feet and LNAV Cats C/D and Circling Cats A/C/D visibility $\frac{1}{4}$ SM.

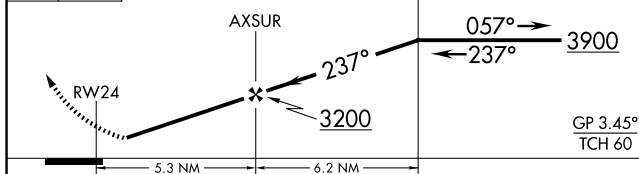
MISSED APPROACH:
Climb to 3900 direct
ESONE and hold.

ASOS 119.075	INDIANAPOLIS CENTER 124.625 371.925	UNICOM 123.0 (CTAF) 0
------------------------	---	---------------------------------

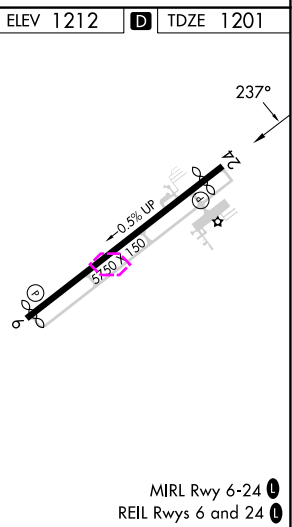


3900	ESONE
	

VGSI and RNAV glidepath not coincident
(VGSI Angle 4.00/TCH 76).

5 NM
Holding Pattern

CATEGORY	A	B	C	D
LPV DA	1510-1 309 (300-1)			NA
LNAV MDA	1980-1 779 (800-1)	1980-1¼ 779 (800-1¼)	1980-2¼ 779 (800-2¼)	1980-2½ 779 (800-2½)
CIRCLING	1980-1 768 (800-1)	2040-1¼ 828 (900-1¼)	2040-2½ 828 (900-2½)	2040-2¾ 828 (900-2¾)



LONDON, KENTUCKY
Amdt 1A 20MAY21

37°05'N-84°05'W

LONDON/CORBIN/MAGEE (LOZ)

RNAV (GPS) RWY 24